

Demand driven data services for humanitarian aid

UN-SPIDER / ZFL Regional Virtual Expert Meeting

“Space-based Solutions for Disaster Risk Management and Emergency Response for Southern Africa”

Gina Schwendemann & Anne Schneibel

German Aerospace Center

Georisks and Civil Security

Center for Satellite Based Crisis Information



Wissen für Morgen



Demand Driven Data Services for Humanitarian Aid



Data requirements
In the case of a
crisis event



UP-TO-DATE



DIFFERENT SCALES



MULTI-SOURCE



RELIABLE



EASILY ACCESSIBLE



USER-ADAPTED



Crisis information



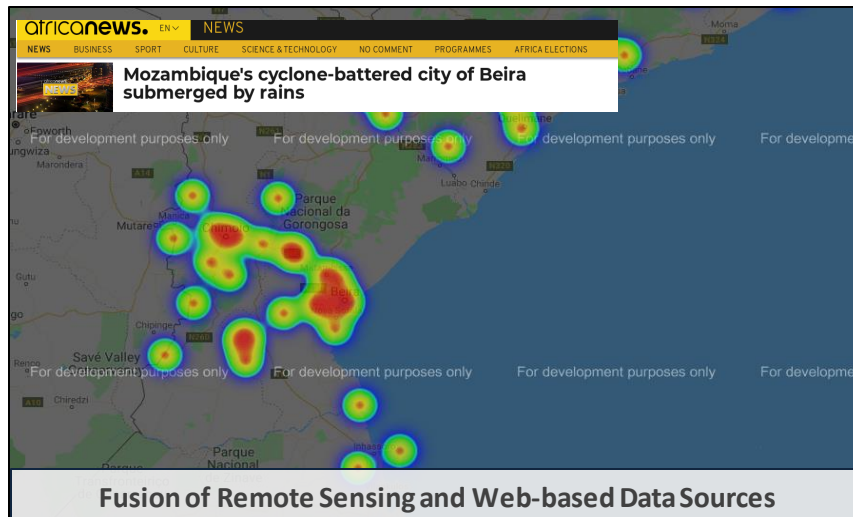
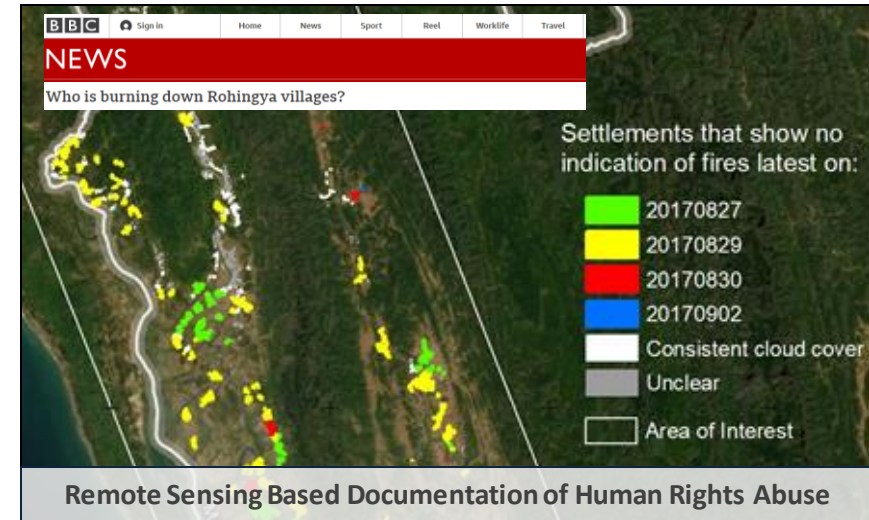
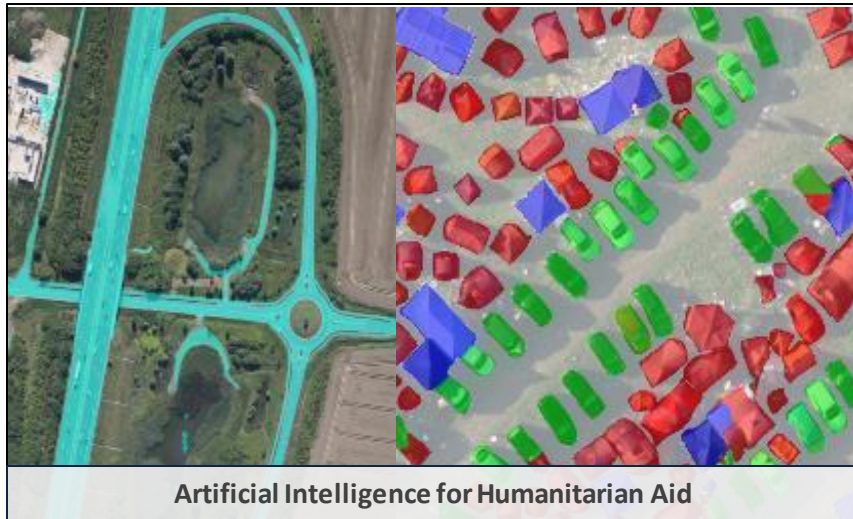
Demonstrations



Prototypes



Key Aspects



Key Aspects



Artificial Intelligence for Humanitarian Aid



Remote Sensing Based Documentation of Human Rights Abuse

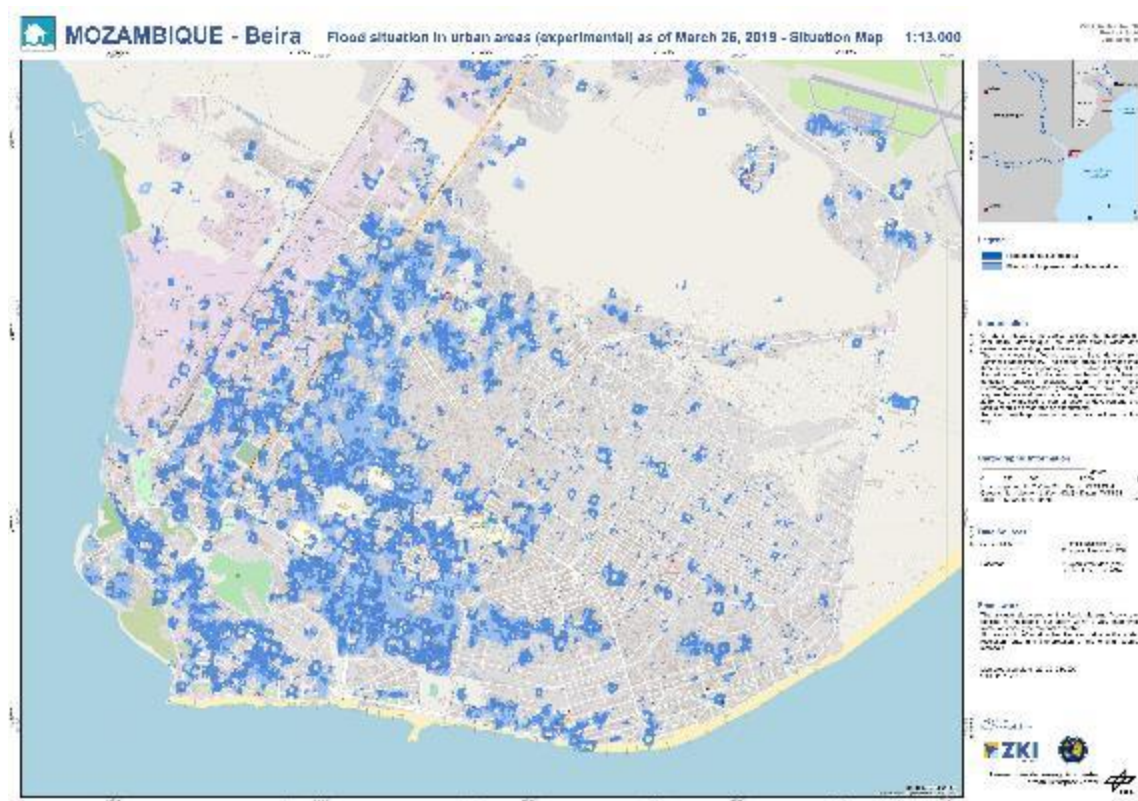


Fusion of Remote Sensing and Web-based Data Sources



Automatisation of Crisis Information Exchange

Artificial Intelligence for Humanitarian Aid



- Automated detection and **damage assessment** of infrastructure and buildings
- **Combine the expertise** from DLR and Humanitarian organizations, i.e. WFP
- **Provide tools** to interpret satellite and drone imagery in the case of emergency



No damage
Minor damage
Major damage
Destroyed

© DFD-IMF & WFP



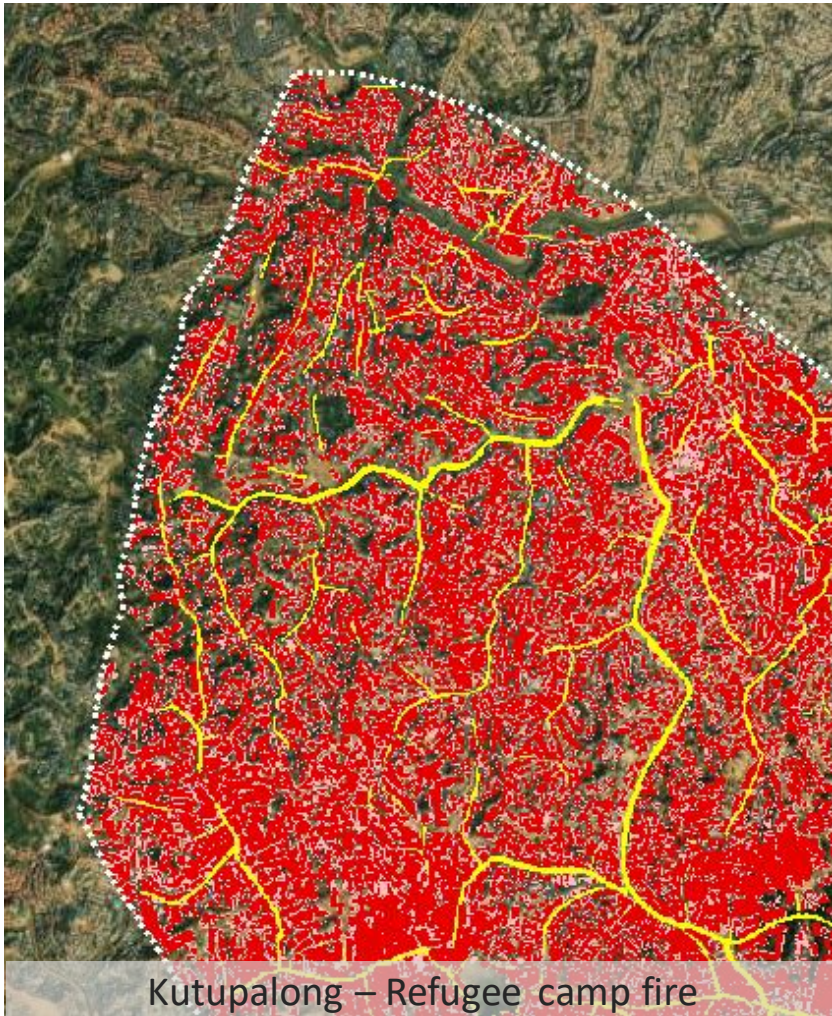
Artificial Intelligence for Humanitarian Aid

Predictions from post-event satellite image



© DFD-IMF & WFP

Artificial Intelligence for Humanitarian Aid



Kutupalong – Refugee camp fire



Beirut – Warehouse explosion

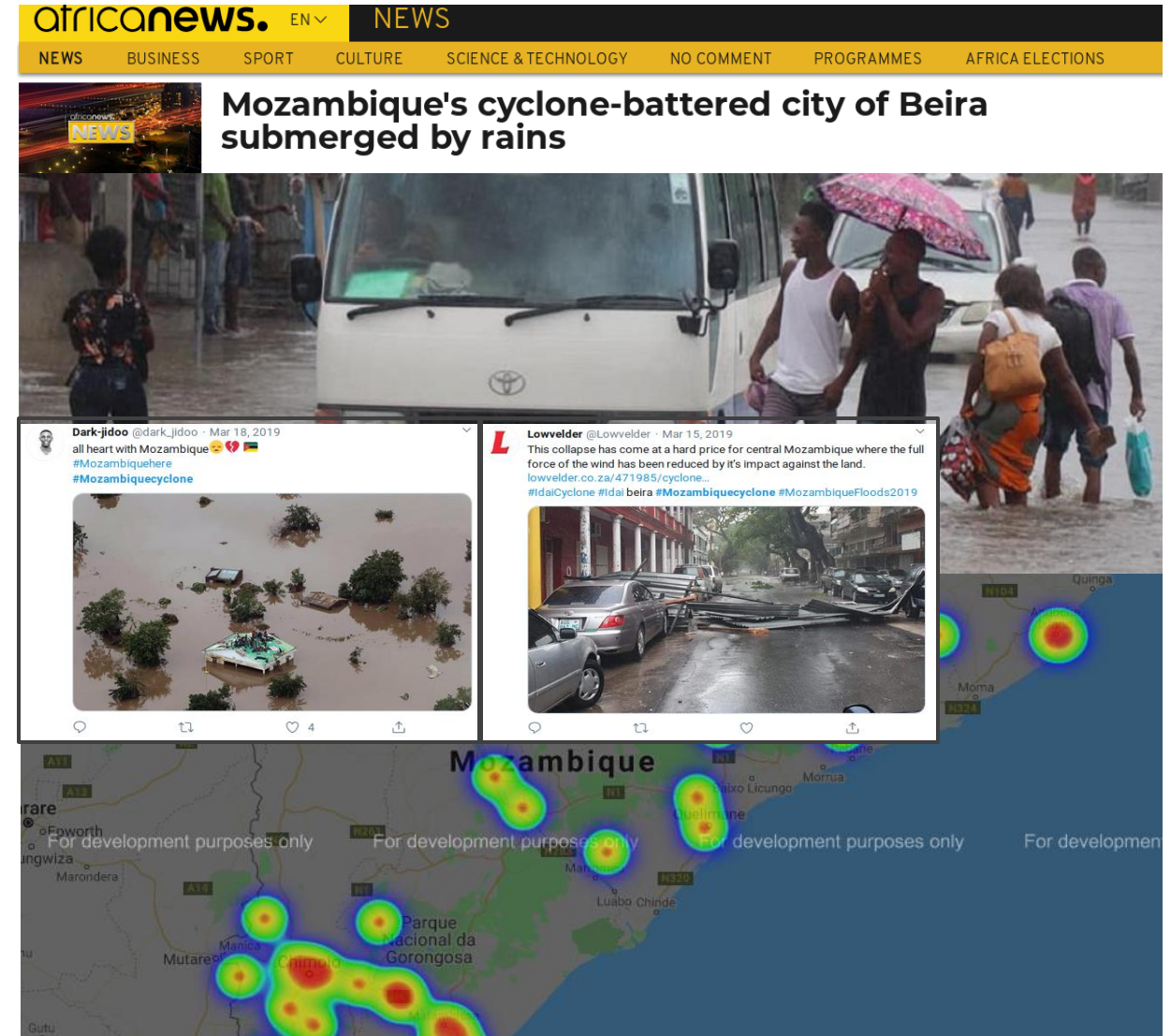
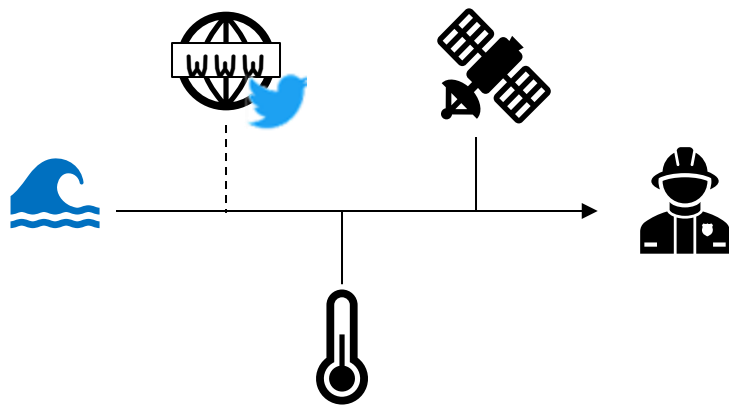


Moria – Refugee camp fire



Using web data to increase information in crisis events

- **Detect hot spots** from keyword, locations, descriptions of geographical settings
- Detection of **unusual increase** for certain keywords or places
- Application:
 - Early detection of crises
 - Complementation of information
 - Satellite tasking
- Filtering and classification of Twitter and news data
- Aggregation and visual presentation



Using web data to increase information in crisis events

Park rangers in Mozambique stage a grassroots rescue effort following Cyclone Idai
As international aid workers struggle to support survivors of Cyclone Idai in Mozambique, the staff of the Gorongosa National Park are working around the clock to save their neighbours.

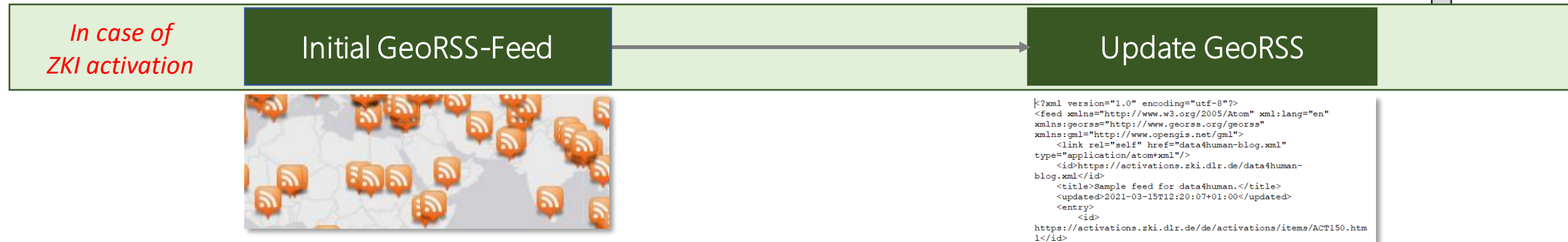
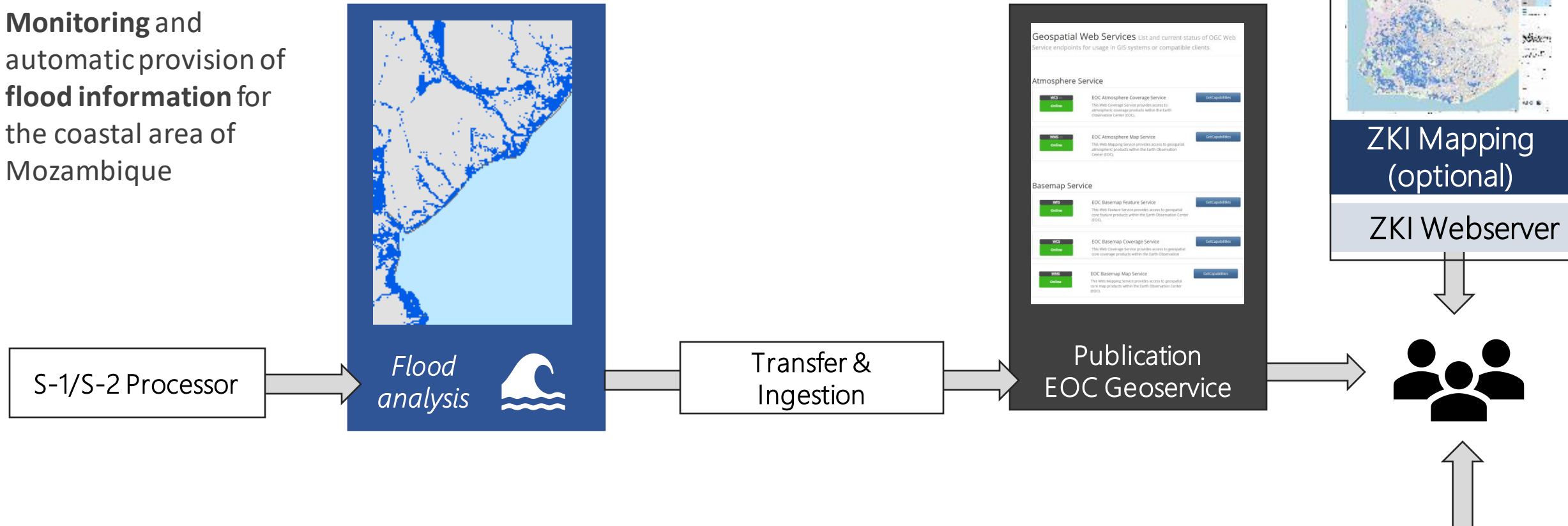
Rel: 1.0
Flood survivors at Mbulumbuzi Camp worried over security
[Link](#)

Google Hybrid
Google Maps
Google Terrain

- ☒ Unspecified
- ☒ Infrastructure
- ☒ Food
- ☒ Medical
- ☒ Political
- ☒ Humanitarian
- ☒ Judicial
- ☒ Economical
- ☒ Material
- ☒ Militarian

(Source: DLR-DW)

Monitoring and automatic provision of flood information for the coastal area of Mozambique



Thank you very much for your attention

