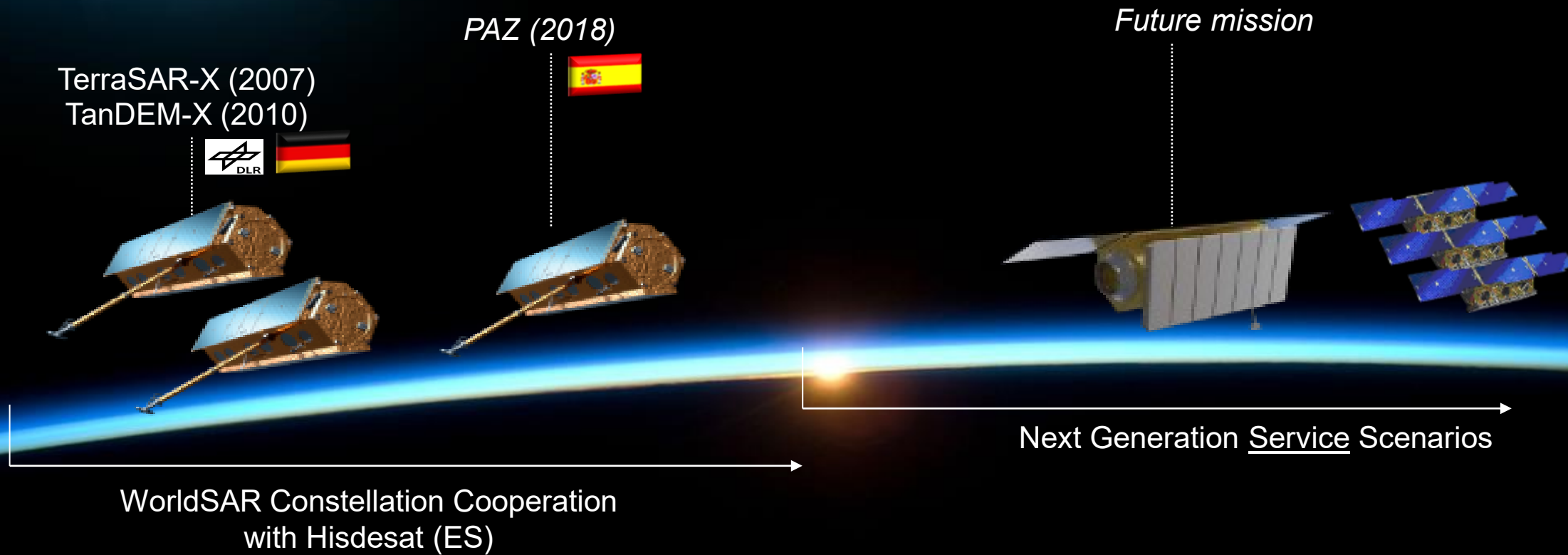


# Disaster Management using Digital Elevation Model & Radar Weather Independent Earth Observation data (SAR)

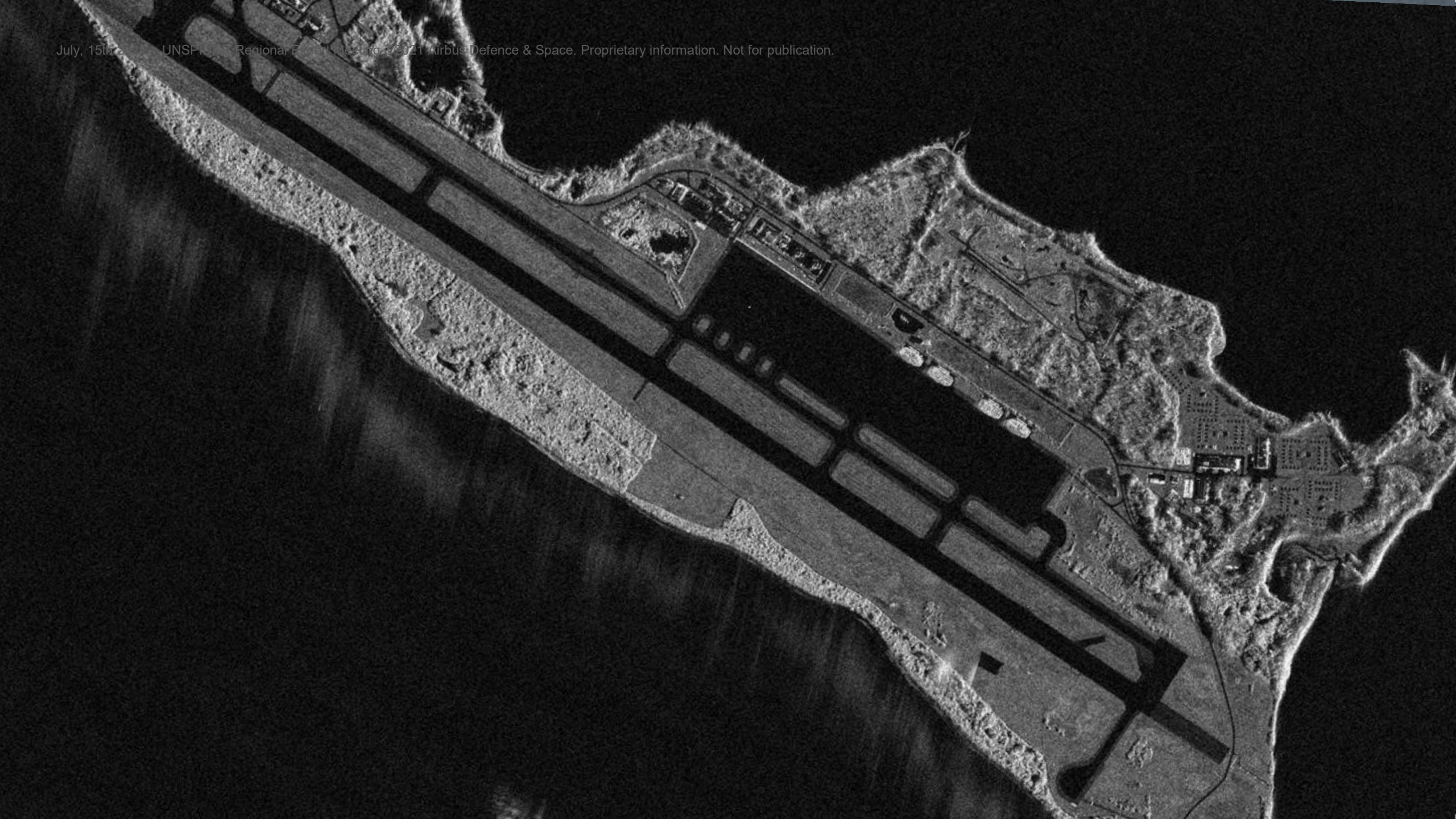


Ciro Farinelli, Future Earth Observation SAR Programs  
Virginia Herrera, SAR Application Developer  
**Connected Intelligence**  
**Airbus Defence and Space**  
**Germany**

# EO SAR: Airbus Missions









# Digital Elevation Model

## *Southerland, South Africa*



# Use Case #1

## Ghana: Inundation Hazard Modelling

### Applications:

- Storm Surges
- Coastal Floods



## Coastal flooding simulation, Accra West, Ghana



Analysis from WorldDEM™, Background Image from Sentinel 2



# Use Case #1

## Ghana: Inundation Hazard Modelling

### Applications:

- Storm Surges
- Coastal Floods



## Coastal flooding simulation, Accra West, Ghana



Analysis from WorldDEM™, Background Image from Sentinel 2



# Use Case #1

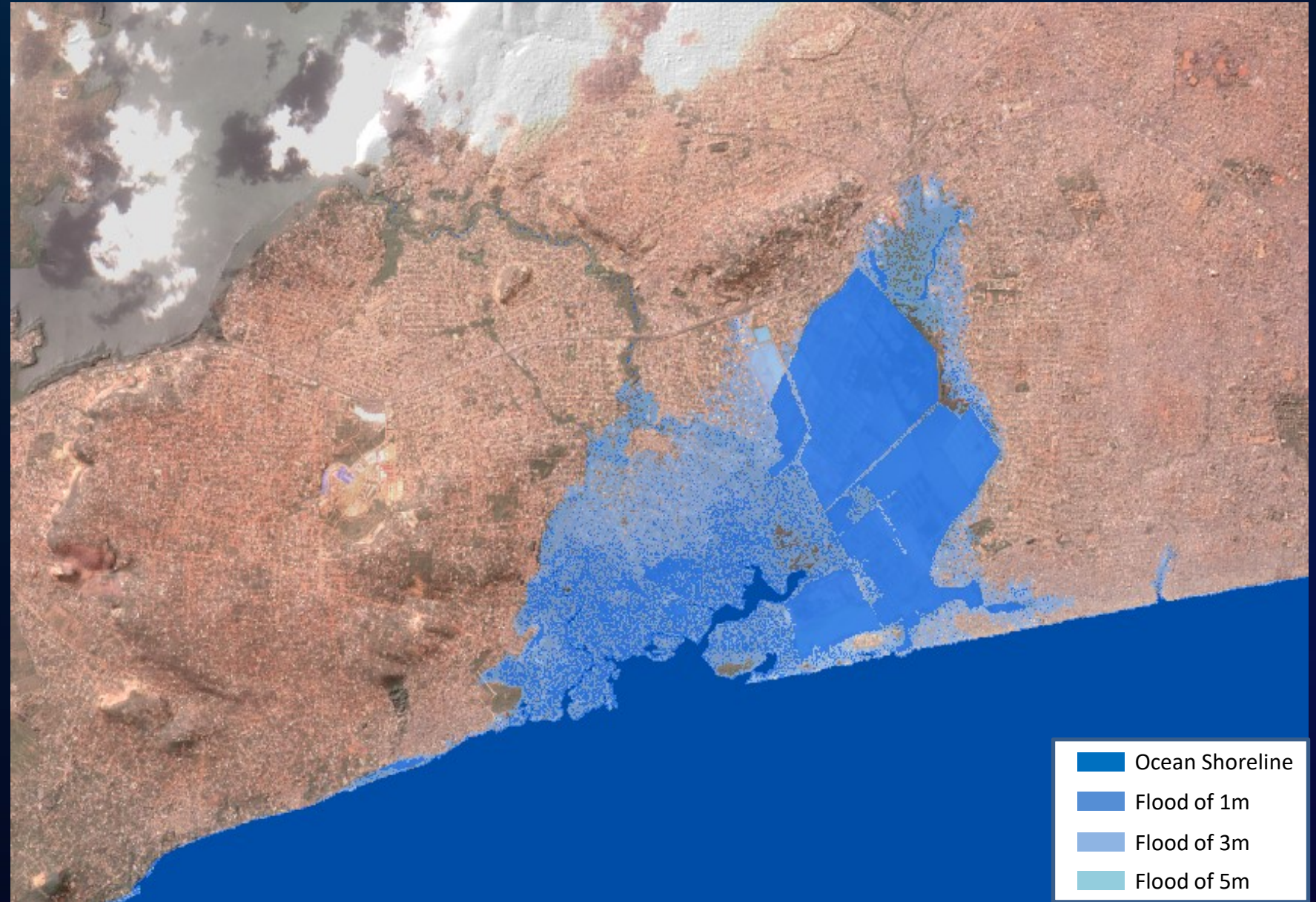
## Ghana: Inundation Hazard Modelling

### Applications:

- Storm Surges
- Coastal Floods



## Coastal flooding simulation, Accra West, Ghana



Analysis from WorldDEM™, Background Image from Sentinel 2



# Use Case #1

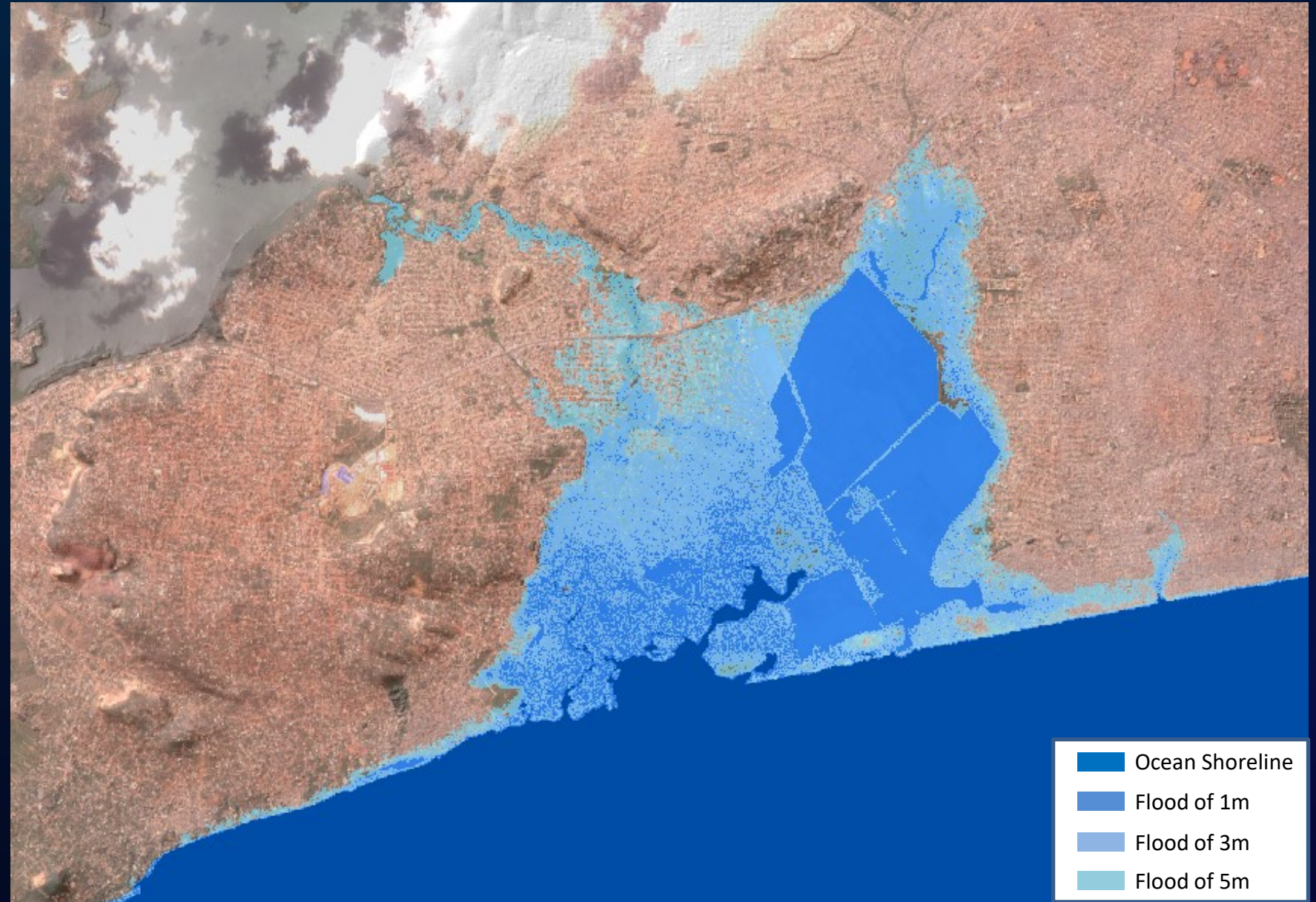
## Ghana: Inundation Hazard Modelling

### Applications:

- Storm Surges
- Coastal Floods



## Coastal flooding simulation, Accra West, Ghana



Analysis from WorldDEM™, Background Image from Sentinel 2

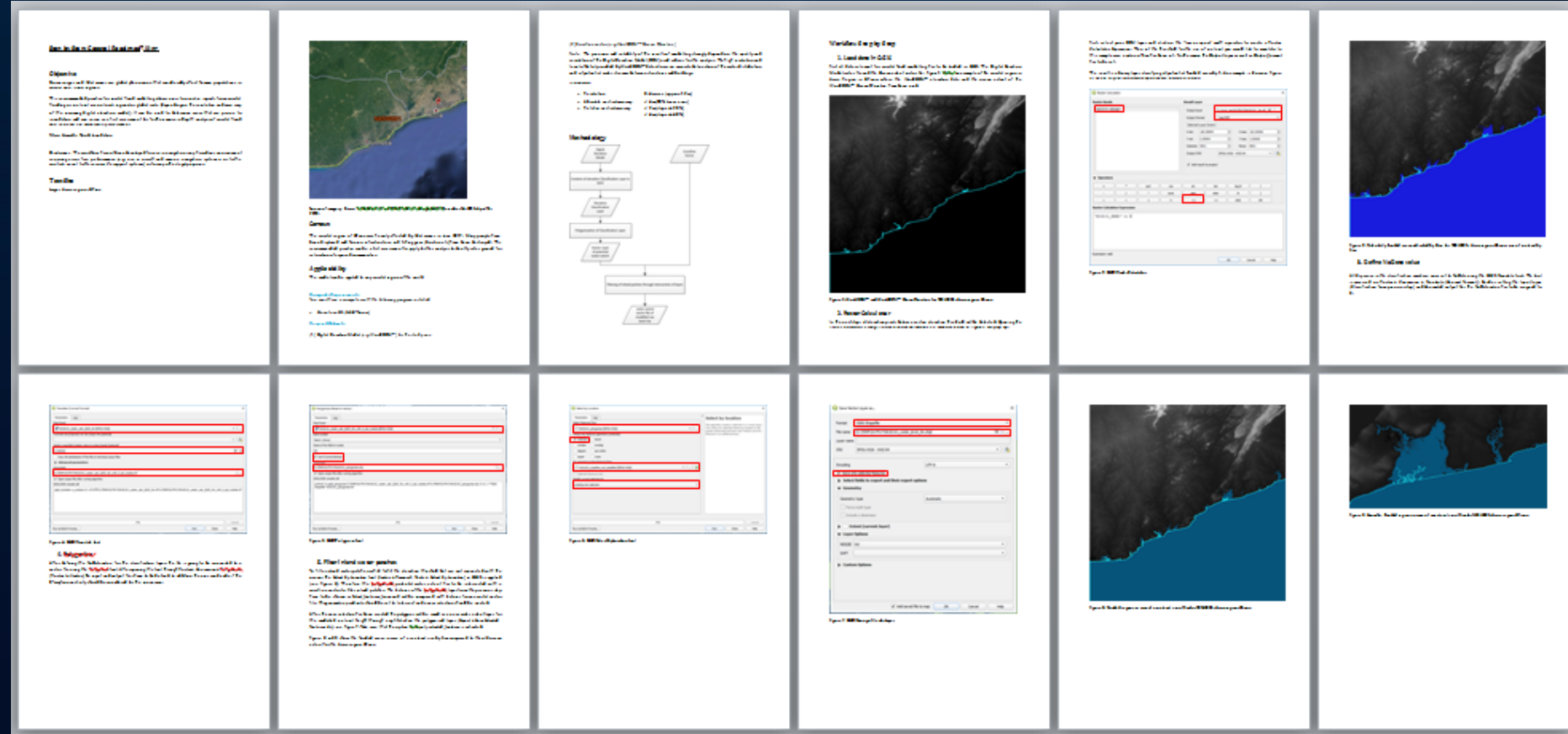


# Coastal flooding simulation, Accra West, Ghana

## Use Case #1

## Recommended Practice for coastal flood modelling

→ Published at the  
UN-SPIDER  
Knowledge Portal



- Open source GIS software
- Easy handling
- Applicable for all DEM data



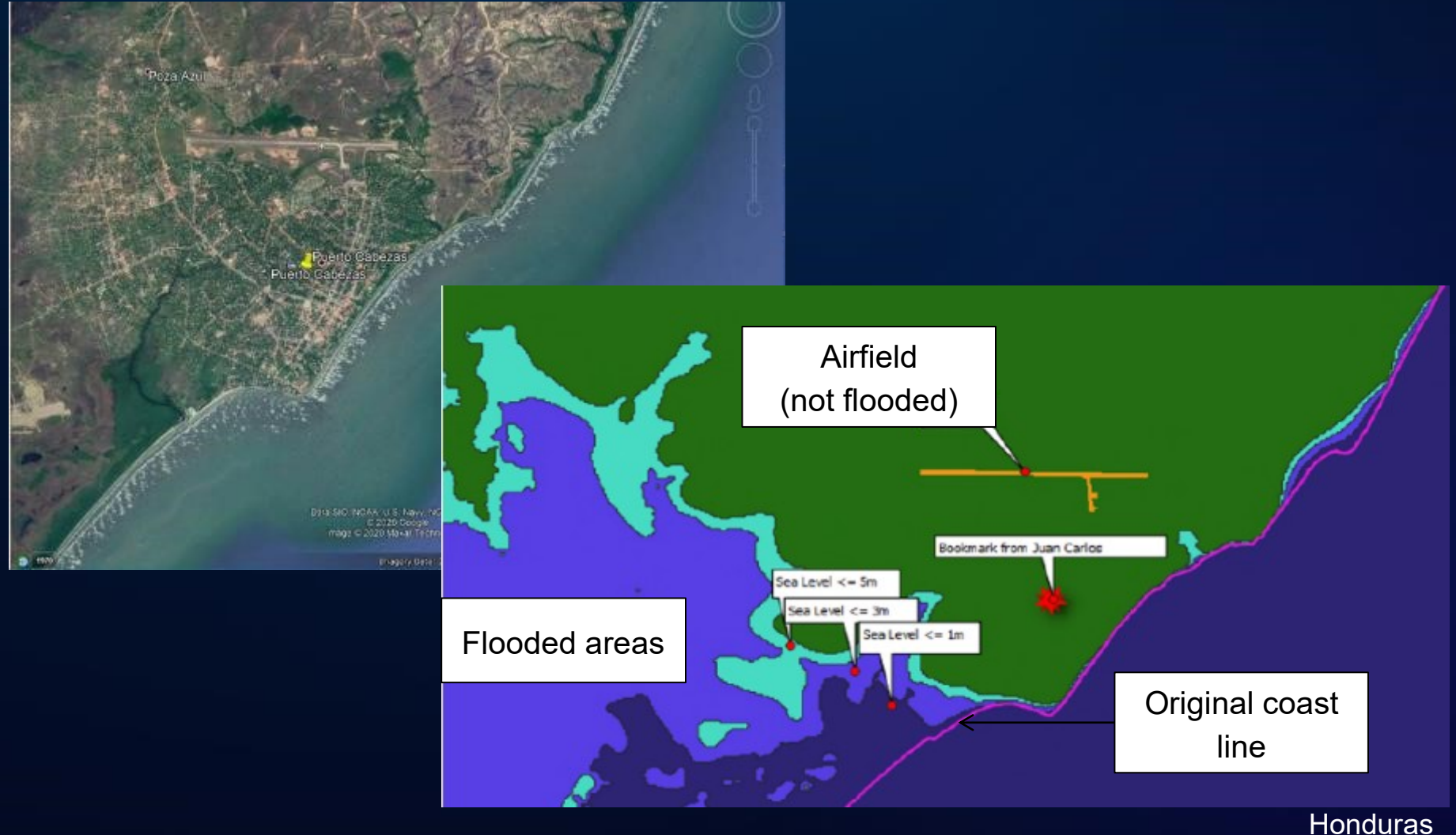
## Use Case #2

## Nicaragua – Hurricane November 2020

# Nicaragua: Flood maps to enable first aid to land in safe airfield

## Applications:

- Emergency response
- Storm surges
- Hurricanes





## Use Case #3

# Guatemala: River Inundation Modelling

*Comparison between  
WorldDEM and free  
and open data*

## Flood Simulation, Coyolate River, Guatemala

COYOLATE RIVER  
HYDRAULIC MODELLING

FLOOD SITE:  
SANTA ODILIA VILLAGE,  
NUEVA CONCEPCION, ESCUINTLA,  
GUATEMALA

DISCHARGE DATA FROM THE  
CERRO COLORADO STATION  
T = 50 YEARS



¡Clasificá en acción para enfrentar el cambio climático!



**AIRBUS**

Courtesy of Private Institute for Climate Change Research

**AIRBUS**

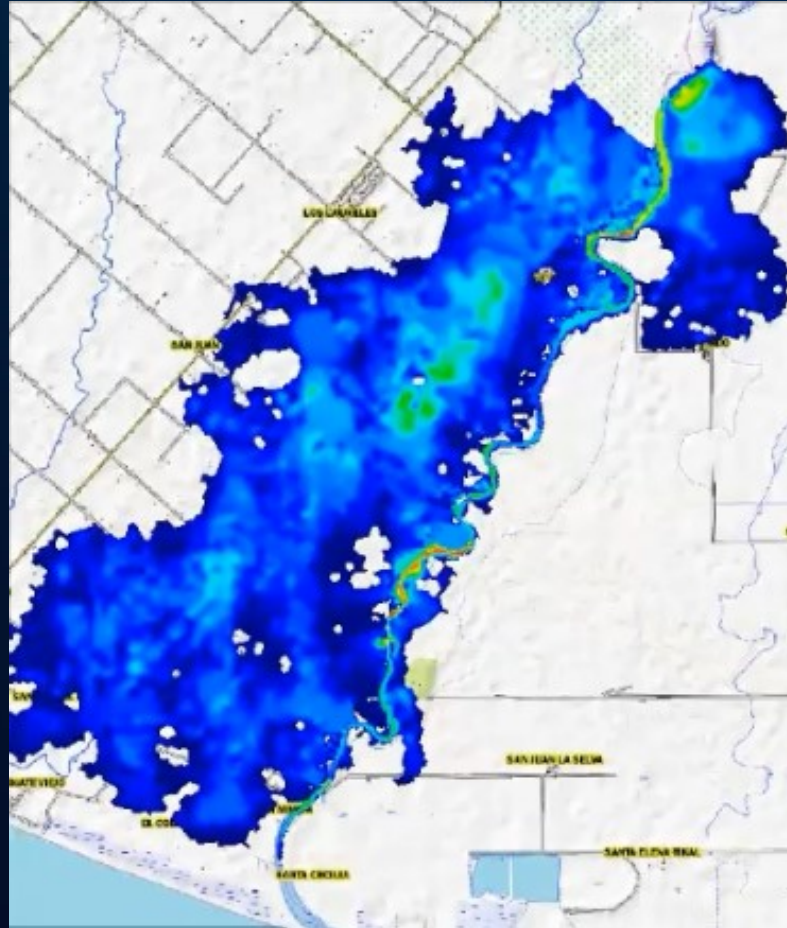


## Use Case #3

### Guatemala: River Inundation Modelling

*Comparison between  
WorldDEM and free  
and open data*

## Flood Simulation, Coyolate River, Guatemala



Specific discharge  
SRTM, 30M

VS



Specific discharge  
WorldDEM, 12M



¡Clasificando en acción para enfrentar el cambio climático!



**AIRBUS**

Courtesy of Private Institute for Climate Change Research

**AIRBUS**



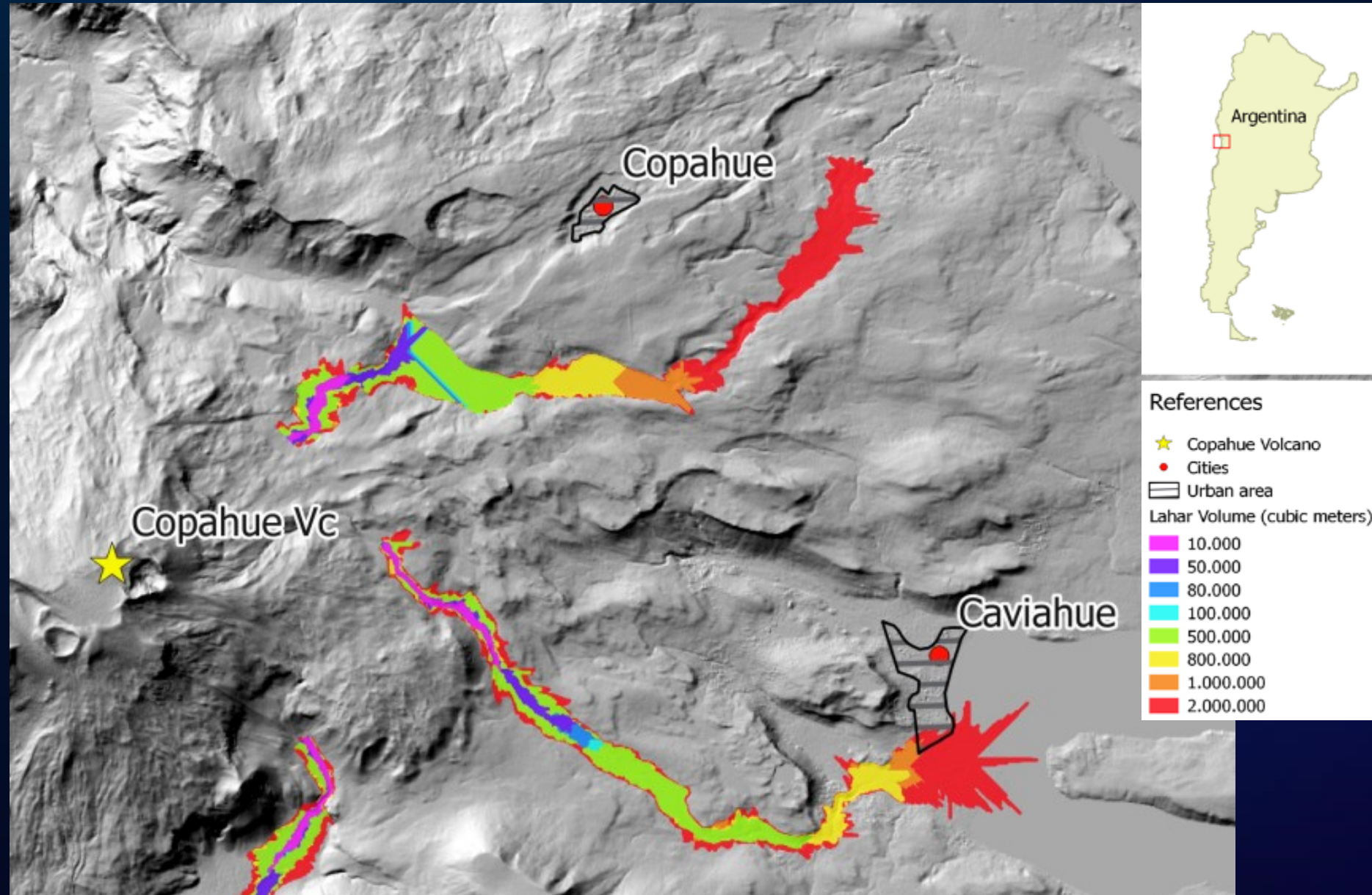
## Use Case #4

### Argentina: Lahar Modelling Using WorldDEM™

#### Applications:

- Lahar modelling
- Settlement areas hazard risk assessment

## Lahar Modelling, Copahue Vulcano, Argentina





## Use Case #5

### Germany: River Inundation modelling with WorldDEM DTM<sub>lite</sub>

Example of a 100 Year  
Return Flood modelling.  
Neckarau (Germany)

In collaboration with:



## Example of a 100 Year Return Flood modelling. Neckarau (Germany)



*Slide with animation*

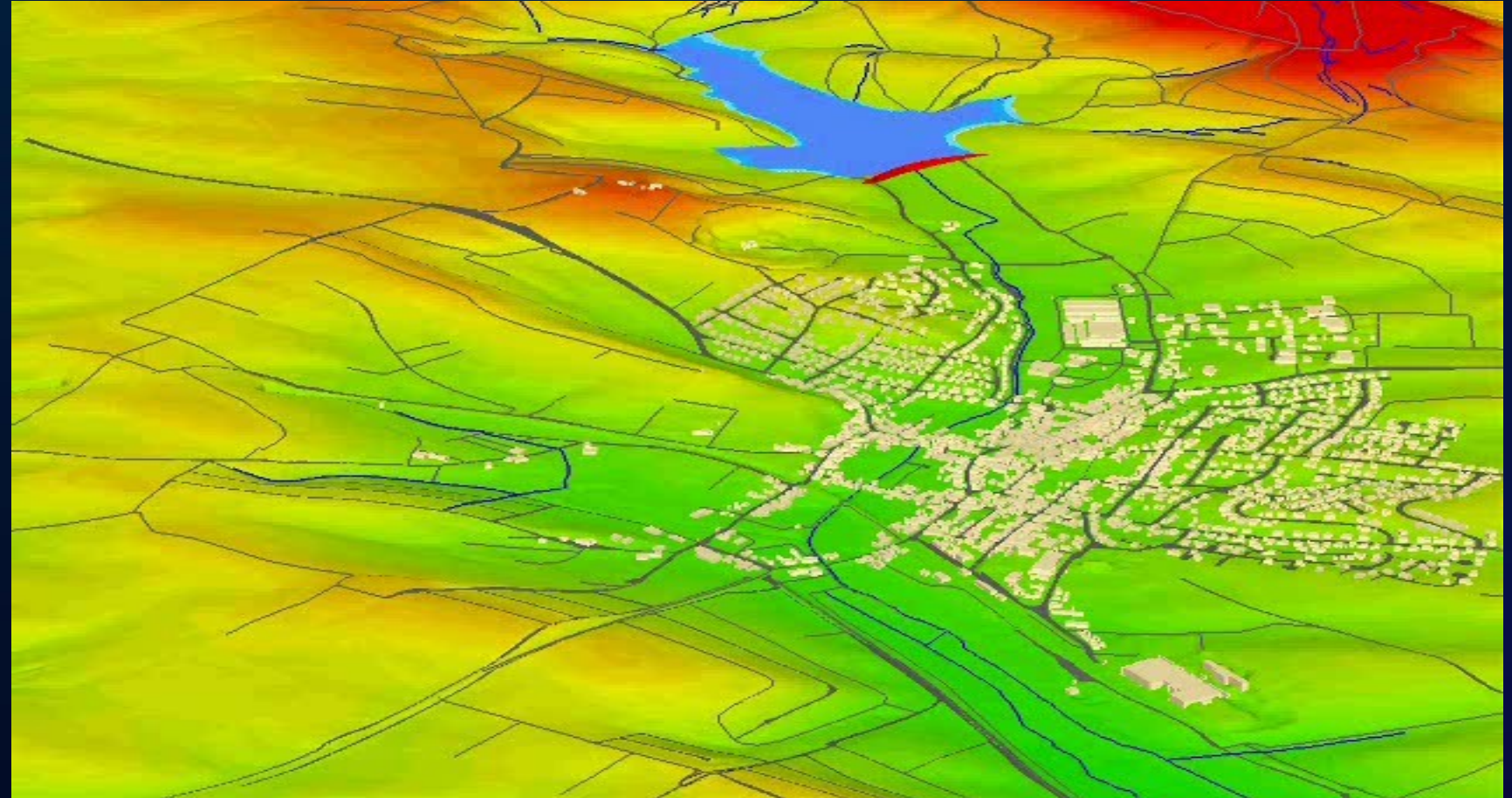


## Use Case #6

### Dam Failure scenario

With simulation models such as FloodArea and Airbus Digital Elevation models, these processes can be well modeled to fit the customer requirements

## Combination of DTM and buildings 3D for flood simulation



*Slide with animation*

In collaboration with:



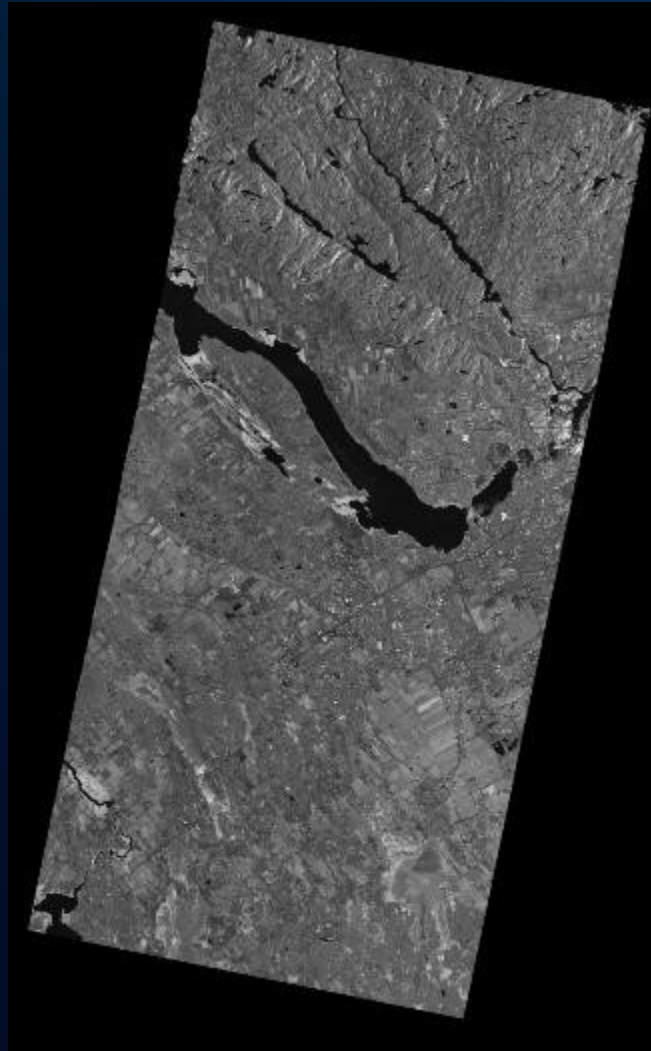


# Use Case #7

## Flood Rapid Mapping

Global availability of WorldDEM data and derived DTM<sub>lite</sub> allows for the implementation of globally robust procedures to assist the automated mapping of flood events.

## Use of WorldDEM™ data to support rapid mapping of flood events



TSX1\_SAR\_EEC\_RE\_\_SM\_S\_SRA\_2019051  
5T112133\_20190515T112143



- Water in time 2 - Open water
- Water in time 2 - water under vegetation
- Water in time 1 - main permanent water bodies



# *Thank you*

## **Contact**

Ciro Farinelli  
Future SAR Programs Manager  
[ciro.farinelli@airbus.com](mailto:ciro.farinelli@airbus.com)  
T +49 75452 1860  
Airbus Defence and Space  
Friedrichshafen, Germany

Virginia Herrera  
Applications Developer  
[Virginia.herrera@airbus.com](mailto:Virginia.herrera@airbus.com)  
T +49 75452 3382  
Airbus Defence and Space  
Friedrichshafen, Germany