

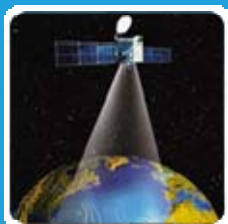


中国遥感云平台
中国首家遥感云计算平台

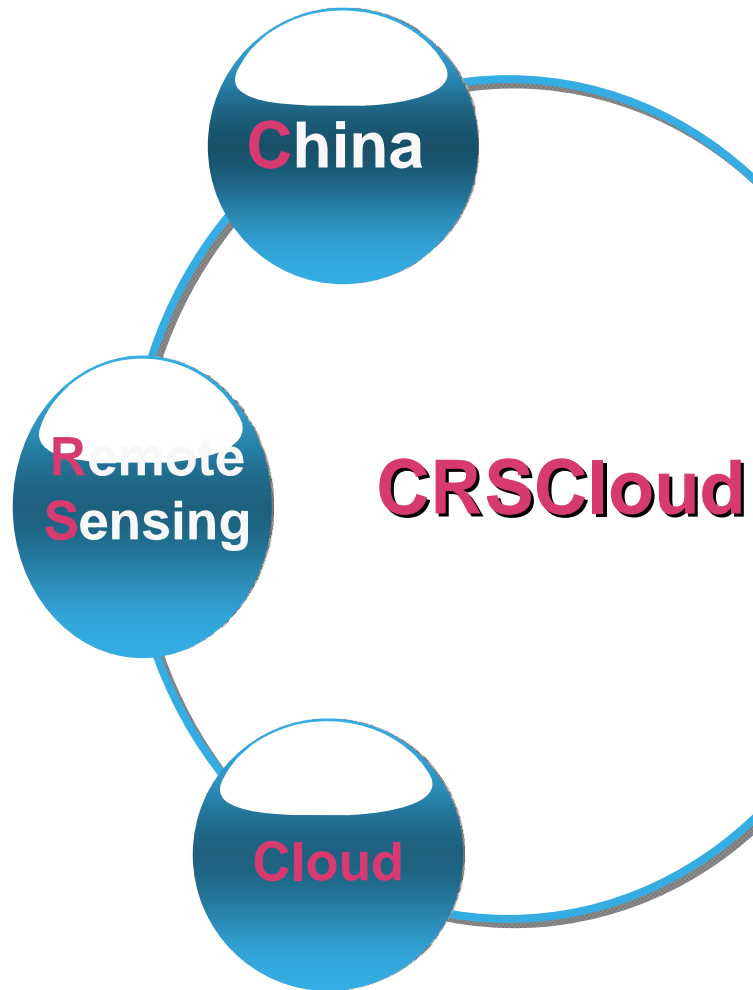
Introduction of CRSCloud (China Remote Sensing Cloud Computing Platform)

Nanxiang Fu

Beijing Huadimap Info Tech Co.,Lt



What is CRSCloud?



www.crscloud.com





1 Introduction

2 Main Businesses

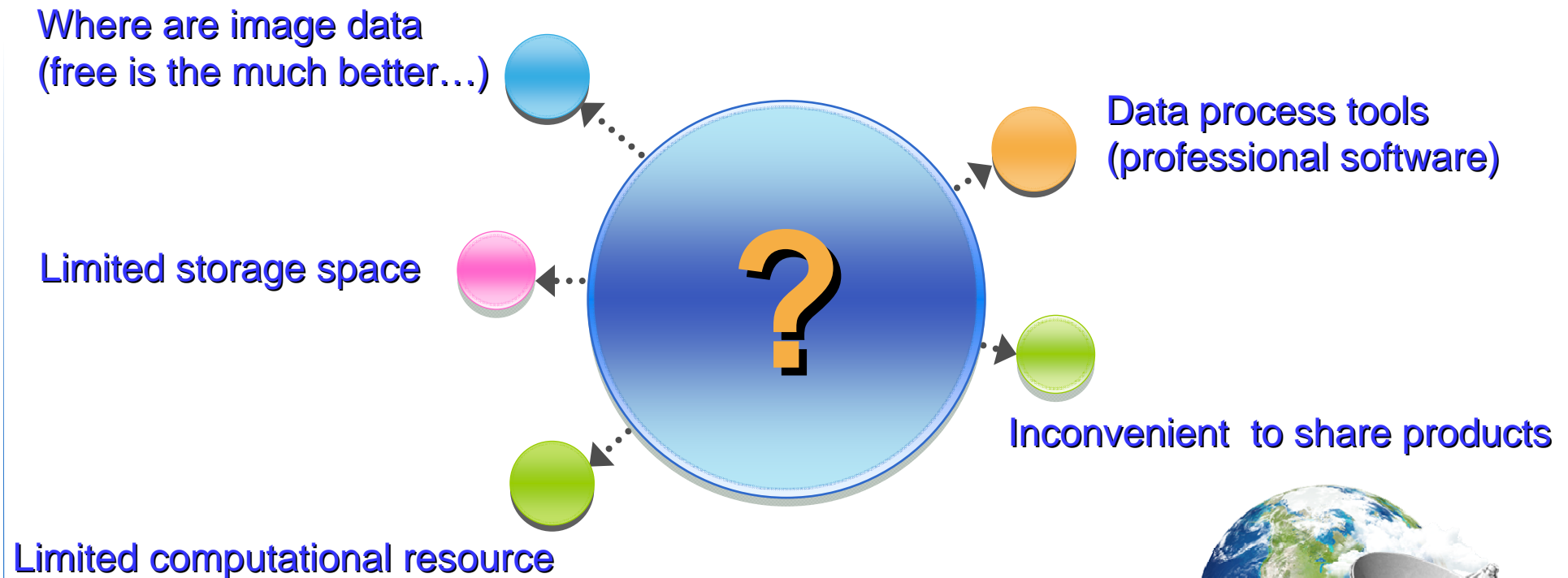
3 Cases

4 Summary

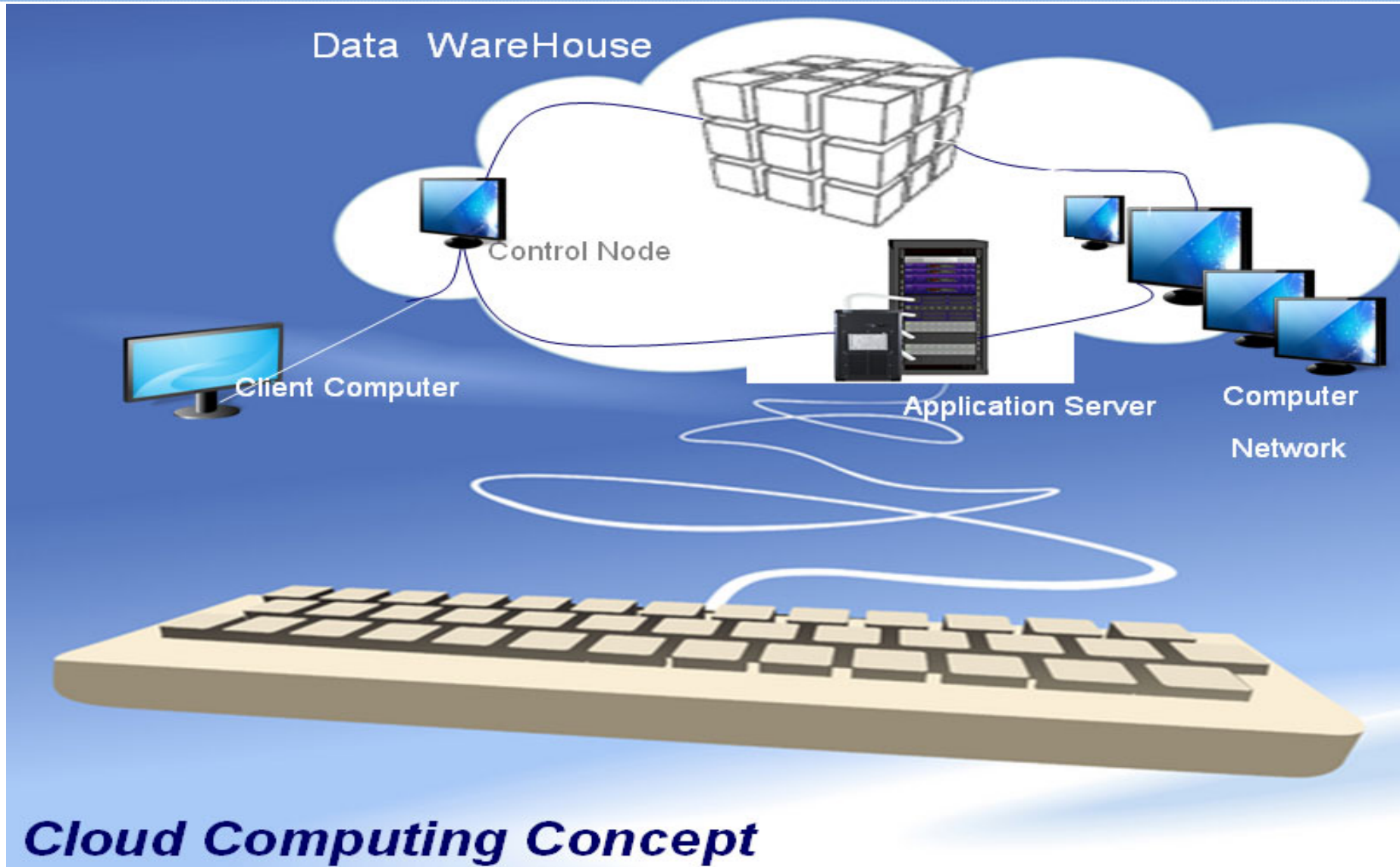




Common Problems in RS applications



Cloud Computing



Cloud Computing Concept



Introduction



By applying cloud computing techs and integrating **data searching/ordering**, **online service** and **product sharing**, the China cloud computing platform of remote sensing makes it much more convenient for users to access data and services, which are extendable and on demand.

中国遥感云平台

登录 | 注册

首页 数据订购 在线服务 产品共享

搜索遥感数据
分享遥感服务

数据订购

在线服务

产品共享

Searching Data And Sharing Applications





1 Introduction

2 Main Businesses

3 Cases

4 Summary





In image store, users can:



- ✓ **Search your interested data in massive data efficiently**
- ✓ **Order image data obtained from multi-sensor with multi-level safely**
- ✓ **Download public data for free**

- **Data Search**

Associated with **powerful image searching tools**, users can browse remote sensing data conveniently by setting several conditions, e.g. geographical region, date, sensor type, etc.



Business -- Image Store



- **Multi-source Data**

The massive data are obtained from various sources (e.g. **satellites and air-based platforms**) with multiple resolutions and levels

- **Data Ordering**

All remote sensing image data searchable are available. **Both large and retail order are accepted.**

- **Data dissemination**

The image data can be disseminated by several approaches, including **FTP, CD-ROM and online download.**

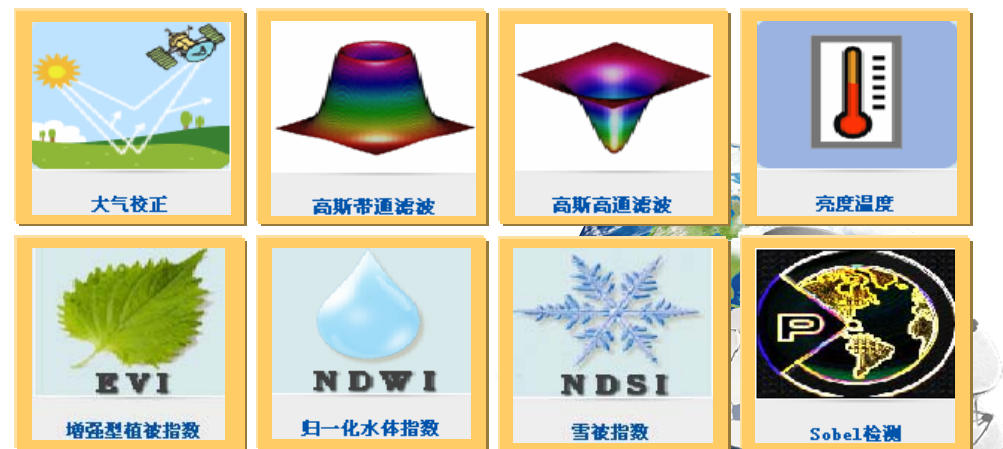




• Online Application

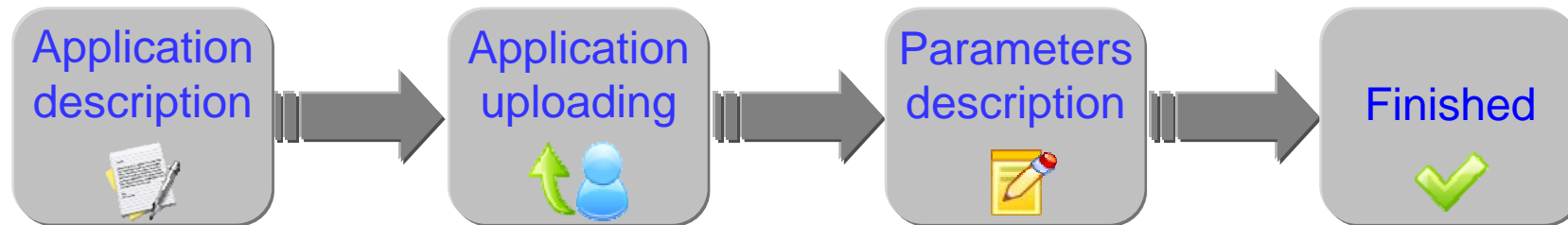
- ✓ Complete application classification system
- ✓ Applications in various fields, such as meteorology, ocean, land survey and mapping,.....
- ✓ Special applications in the Wenchuan earthquake、oil spills in bohai sea and so on
- ✓ All the applications can be called and executed online

- Radiometric Correction
- Geometric Correction
- Image Classification
- Land Surface Parameters inversion
- Change Detection
-





- **Application Release**



- ✓ Application description: including its name, key words, group belongs to and description
- ✓ Application uploading:
 - Web service deployment file (*war)
 - Web service description language file (*WSDL)
- ✓ Supported programming language: including java、C++、Fortran、C#.....
- ✓ Parameters description: descriptions of the input and output parameters



Business -- Product Sharing



- **Product Sharing**

share remote sensing value-added products (such as thematic map and other products)

- **Product downloading**

obtain the demanded remote sensing value-added products conveniently and swiftly

The **ONLY** domestic website that sharing remote sensing data products

和千万网友分享产品
当前已有 **1176** 份产品
[分享我的产品](#)

产品查询
产品名称:

采集时间:
开始时间:
结束时间:
卫星: 选择
空间分辨率: 米
[查询](#)

您现在的位置为: 产品共享

选择	缩略图	产品名称	产品类别	成像日期	中心经度	中心纬度	财富值	上传者	操作
<input type="checkbox"/>		新疆阿克苏地区EM...	专题图	--	--	--	5	yliu	详情 下载
<input type="checkbox"/>		新疆喀什地区EMT...	专题图	--	--	--	5	yliu	详情 下载
<input type="checkbox"/>		福建汀江地区植被与...	专题图	--	--	--	5	yliu	详情 下载
<input type="checkbox"/>		桂林SPOT-5 (...	专题图	--	--	--	5	yliu	详情 下载
<input type="checkbox"/>		腾冲火山群SPOT...	专题图	--	--	--	5	yliu	详情 下载
<input type="checkbox"/>		张家界_武陵源SP...	专题图	--	--	--	5	yliu	详情 下载
<input type="checkbox"/>		九江_庐山SPOT...	专题图	--	--	--	5	yliu	详情 下载
<input type="checkbox"/>		黄山Envisat...	专题图	--	--	--	5	yliu	详情 下载
<input type="checkbox"/>		火焰山Landsa...	专题图	--	--	--	5	yliu	详情 下载
<input type="checkbox"/>		各拉丹冬峰Rada...	专题图	--	--	--	5	yliu	详情 下载

全选 反选 共992条(当前页:10条) 共100页/第3页 1 2 3 4 5 6 7 8 << 首页 < 上一页 下一页 > 末页 >>





Extra large independent storage space

Registered users can :

✓ Upload and manage their massive image data

✓ Collect the original data and the results of online execution

Application center

- records of shared applications
- records of called applications
- focused applications

Product center

- records of shared products
- records of downloaded products
- focused products

Order center

- Tracking orders' statuses

Account center

- account information
- password
- scores





1 Introduction

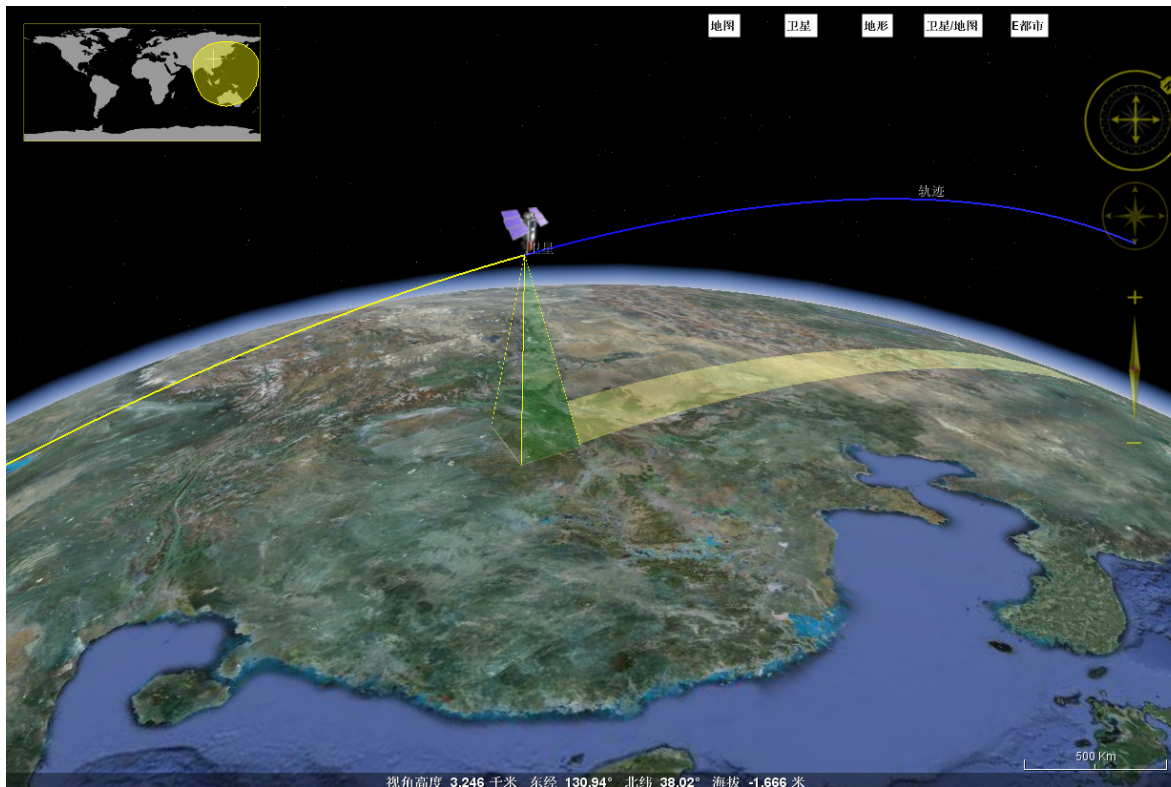
2 Main Businesses

3 Cases

4 Summary



Cases -- Display coverage of satellite



➤ Compute the ephemeris data of various satellites, such as SPOT, Landsat, EOS AQUA/TERRA, FY and CBERS etc, from which the satellite's position and altitude, acquisition times, and its field of view can be obtained.

➤ Display the satellite sensor's coverage at a specified period of time based on the computed ephemeris data in a configured pattern.



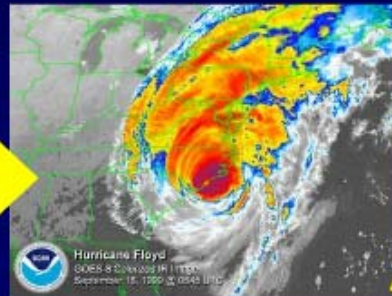
Applications---Disaster Management



Measurements & Analysis



System Products



Responders' Information



Weather Systems



Integrated Storm
Impact & Response



Cases -- Disaster Management

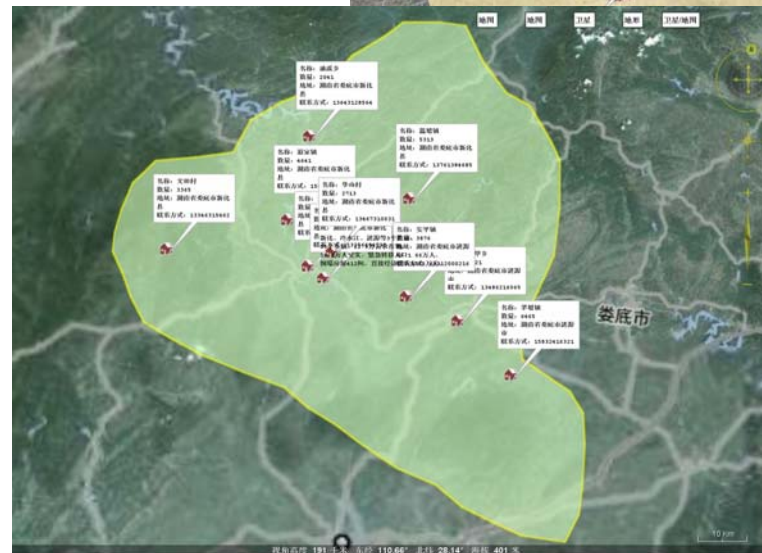
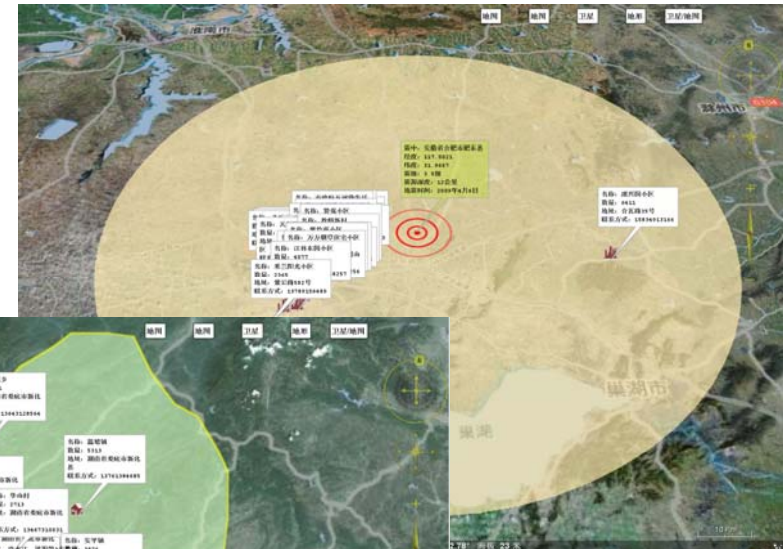


➤ Display the disaster area according to its geographical coordinates

➤ Display information about the disaster obtained from various sources including videos, data, images, etc.

➤ Some basic tools: such as overlay, zoom in/out ,roam, etc.

➤ Annotation tool is provided for users to label the disaster information on the map.



Outline



1 Introduction

2 Functions

3 Cases

4 Summary





Our goals:

- Search in the most complete and comprehensive metadata base
- Build the largest online application store
- Provide the most remote sensing products to share





Our goals:

➤ Search in **the most complete and comprehensive** metadata database

➤ Build **the largest** online application store

➤ Provide **the greatest number of** remote sensing products for sharing





中国遥感云平台

中国首家遥感云计算平台

Thank You!

