



OCHA

United Nations Office
for the Coordination of
Humanitarian Affairs

Coordination Saves Lives

Role of geo-information in emergency management in West & Central Africa

Abdoulaye DIEYE, GIS Officer/Information Analyst
UNOCHA/ROWCA

Beijing, 23 November 2011

dieye3@un.org

www.unocha.org

<http://reliefweb.int/>



PLAN

- Geo-Information supporting regional cholera outbreak
- Geo-Information supporting post-electoral crisis in Côte d'Ivoire
- Geo-Information supporting floods management
- Preparedness for Emergencies in Outlook

Introduction

West and Central Africa is a region with recurrence of environmental problems (floods, drought, soil degradation...etc.), socio-political problems (elections!!!), socio-economical problems (Food Price Rise Impact), Health problems (Diseases), etc.

However, 2011 is marked by 2 main events which have a regional impacts: The Cholera Outbreak and the Côte d'Ivoire crisis

Less floods than the 5 past years but drought in outlook for some areas in the Sahel region

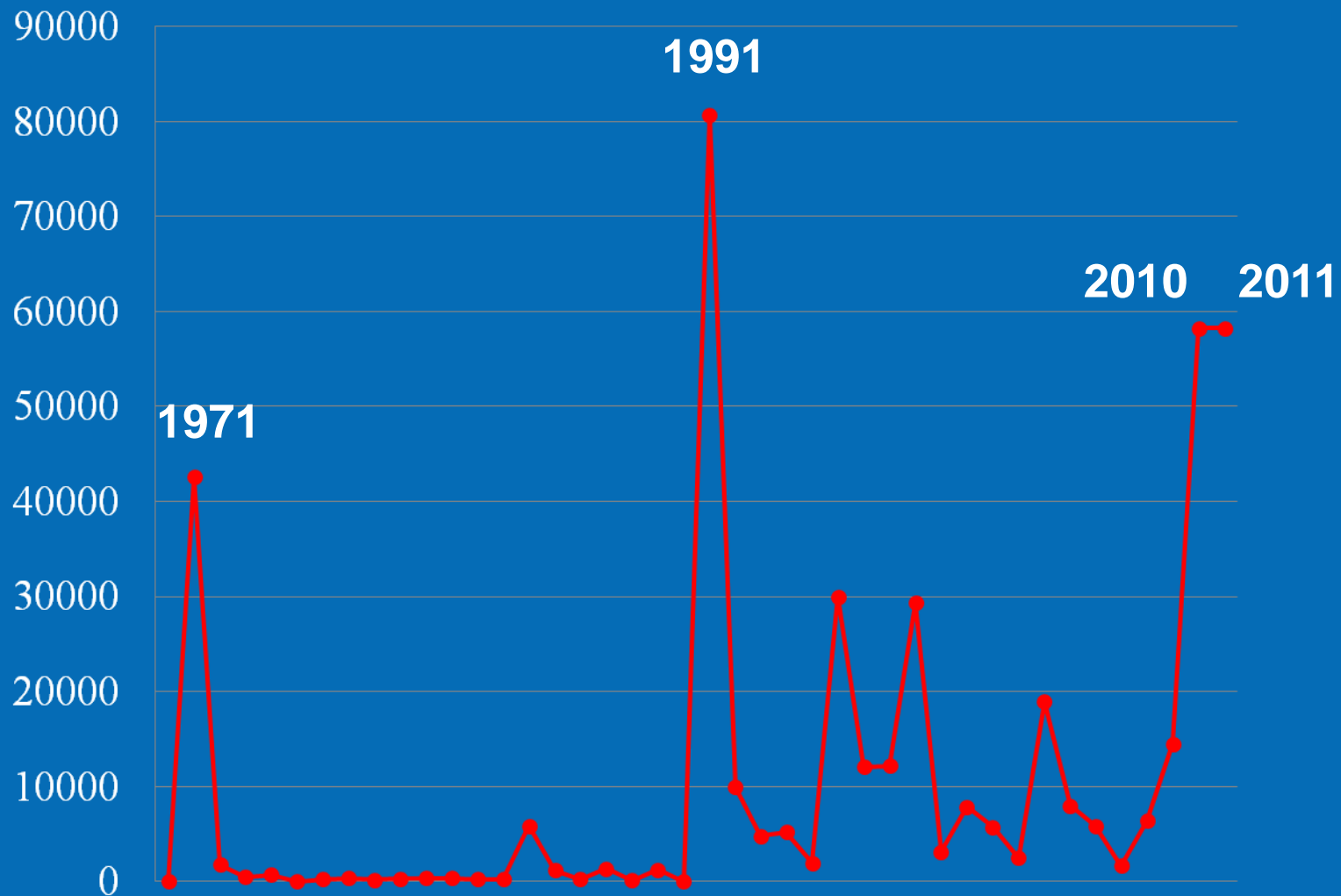
Geo-Information supporting regional cholera outbreak: background

- A major cholera epidemic has been spreading across West and Central Africa since January 2011,
- More than 90,000 cases and over 2,500 deaths reported over the last nine months and an average case fatality rate of 2.9 per cent.

Geo-Information supporting regional cholera outbreak: Hubs

- Three major epidemic hubs: the Lake Chad Basin (Chad, Cameroon, Nigeria and Niger – since May 2010), the West Congo Basin (DRC, Congo-Brazzaville and the Central African Republic – since May 2011) and to a lesser extent Lake Tanganyika (eastern DRC and Burundi).
- The majority of the cases are in the **Lake Chad Basin, which has seen** more than 59,000 cases including 1,917 deaths.

Geo-Information supporting regional cholera outbreak: evolution in lake Chad Basin

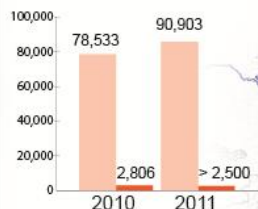


Geo-Information supporting regional cholera outbreak: regional map

West and Central Africa: Cholera Outbreak (As of 23 October 2011)



A major cholera epidemic has been spreading across West and Central Africa since January 2011, with more than 90,000 cases including more than 2,500 deaths over the last nine months.



Evolution of cholera outbreak in West and Central Africa between 2010 and 2011¹

- Number of cases
- Number of deaths

Background

The cholera outbreak in West and Central Africa intensified this year. More than 90,000 cases including more than 2,500 deaths have been reported since January 2011. The cumulative effects of two consecutive years of major epidemics in this region (2010 and 2011) have created a significant humanitarian issue. UNICEF and WHO have proposed a regional strategy to tackle the outbreak. The CERF has allocated a total of USD 11.7 million this year to UNICEF and WHO's emergency response against the cholera epidemic: USD 7.3 million for Chad in July and October, USD 4 million for DRC in July, and USD 400,000 for Niger in October.

The majority of the cases are in the **Lake Chad Basin**, which has seen more than 59,000 cases including 1,917 deaths.



Response

- CERF: 7,3 (Chad)
- CERF: 4 (DRC)
- CERF: 0,392 (Niger)
- CHF Emergency: 0,234 (CAR)
- IFCR: 0,141 (Mali)

0 1 2 3 4 5 6 7 8
in million US\$

Gaps

UNICEF required on 10 October 2011 US\$ 9 million of which US\$ 4.3 million urgently. The budgets of WHO and other field partners also fall short.

The boundaries and names shown and the designations used on all maps do not imply official endorsement or acceptance by the United Nations.

Creation date: 13 Oct 2011

Updated: 02 Nov 2011

Glide: EP-2011-000093-WCAFR
Data sources: Europa Technologies, WFP DevInfo, DCW, AGD

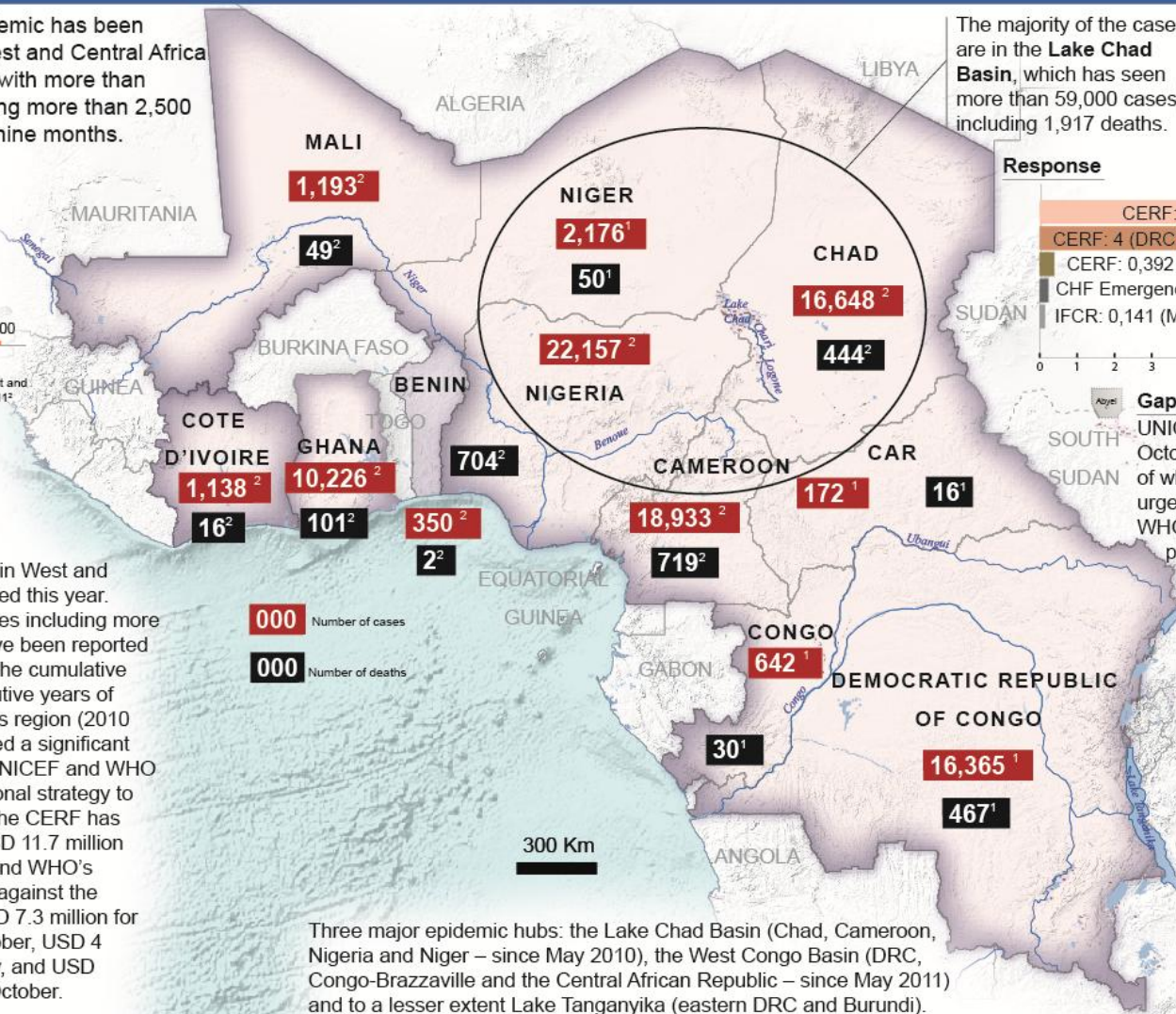
References:

- ¹Reported by UNOCHA/ROWCA (23 October, 2011)
- ²Reported by WHO (23 October, 2011)

Niger: as of early October 2011

Congo-Brazzaville: on 30 September 2011

Feedback: ochaavmu@un.org, dieye3@un.org, http://ochaonline.un.org/rowca, http://www.reliefweb.int



Three major epidemic hubs: the Lake Chad Basin (Chad, Cameroon, Nigeria and Niger – since May 2010), the West Congo Basin (DRC, Congo-Brazzaville and the Central African Republic – since May 2011) and to a lesser extent Lake Tanganyika (eastern DRC and Burundi).

Geo-Information supporting post-electoral crisis in Côte d'Ivoire (1)

- After the civil war of 2002 which a Government controlled South and an Opposition held North, Côte d'Ivoire remains in Uncertainty.
- The presidential election of 2010 was meant to advance the peace process
- Unfortunately, Côte d'Ivoire has been plunged into turmoil after the results of the 28 November second round
- Escalating violence between the 2 parts around the half south of the country
- More than 700,000 IDPs
- More than 200,000 refugees
- At least 1,000 killed in the West

Geo-Information supporting post-electoral crisis in Côte d'Ivoire (2)

Côte d'Ivoire: Electoral Violence and Displacement

(This map is a compilation of events that occurred since the declaration of election results and only refugees in neighbouring countries are updated as of 25 May 2011. IDPs and violence are as of April 2011)



Human rights violations, including rapes, abductions and killings, are escalating amid the ongoing post-electoral crisis in Côte d'Ivoire.¹

Background

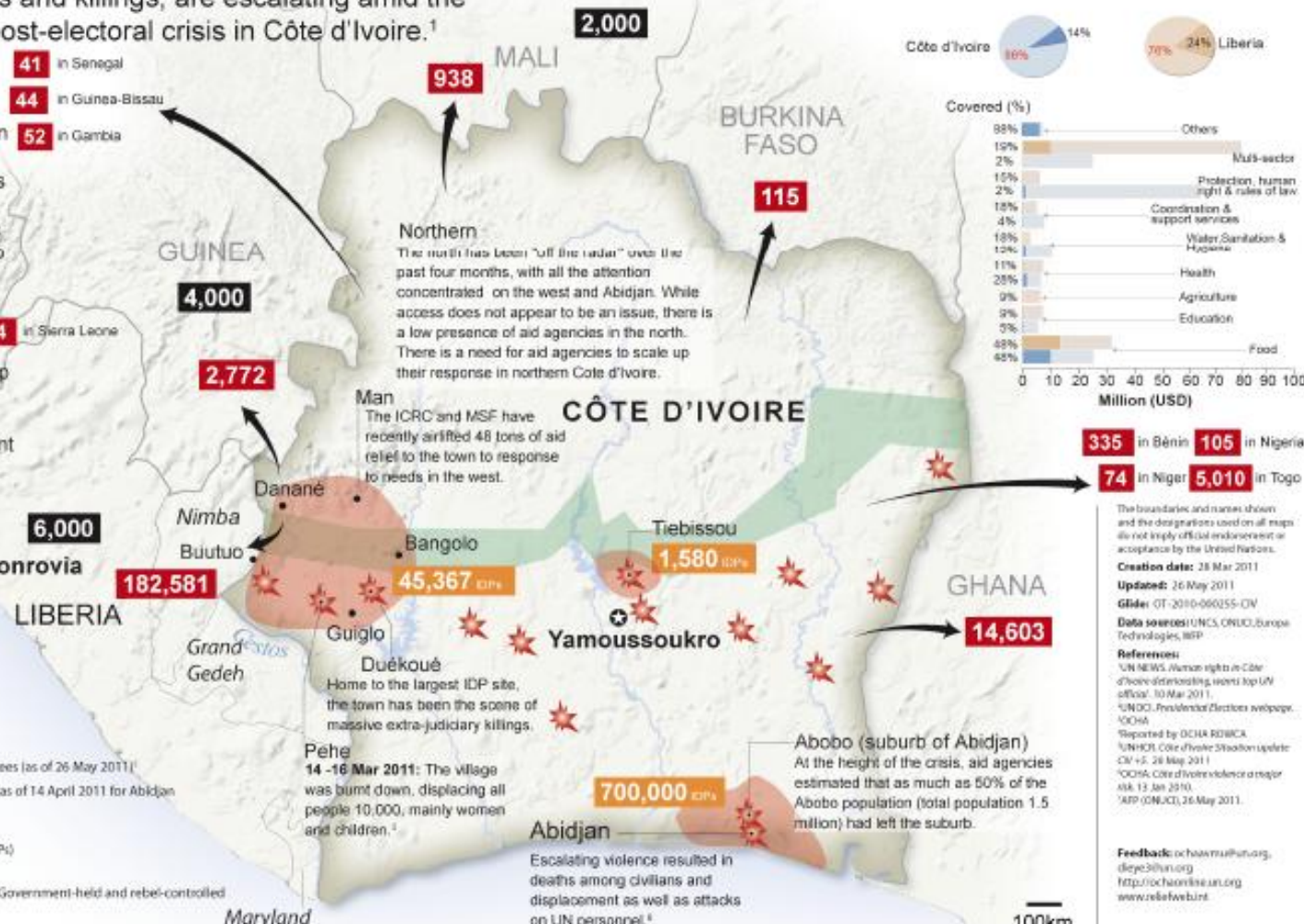
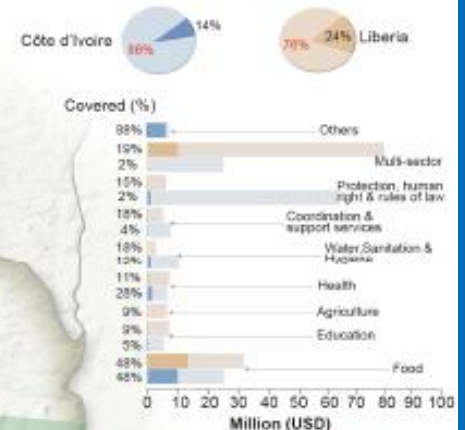
The four-month old humanitarian crisis has impacted the entire country, affecting all vital sectors such food security and nutrition, health, education, and economic activities. Lack of access, due to armed fighting, had in recent weeks significantly reduced aid agencies' abilities to deliver. Despite security constraints, agencies are however scaling up in the west, while Abidjan had remained over the past 10 days largely deprived of any significant aid relief. With a revised appeal of US\$160 million, aid agencies hope to rapidly respond to pressing humanitarian needs in Abidjan. The north, which has virtually been forgotten during the crisis, also needs assistance.²

At least **1,012** killed in the West³

- 000 Number of pre-conflict refugees
- 000 Estimated number of post-electoral refugees (as of 26 May 2011)
- 000 Estimated number of post-electoral IDPs (as of 14 April 2011 for Abidjan and as of 10 Mar 2011 for the other)⁴
- Major fighting
- Area with Internally Displaced Persons (IDPs)
- Former Zone of Confidence (ZoC): Buffer zone that previously separated the Government-held and rebel-controlled areas, monitored by impartial forces.

Emergency Humanitarian Appeal⁵

After post-election crisis humanitarian problems remain but needs are under-financed.



Northern
The north has been "off the radar" over the past four months, with all the attention concentrated on the west and Abidjan. While access does not appear to be an issue, there is a low presence of aid agencies in the north. There is a need for aid agencies to scale up their response in northern Côte d'Ivoire.

Man
The ICRC and MSF have recently airlifted 48 tons of aid relief to the town to respond to needs in the west.

Péhè
14-16 Mar 2011: The village was burnt down, displacing all people 10,000, mainly women and children.⁶

Abobo (suburb of Abidjan)
At the height of the crisis, aid agencies estimated that as much as 50% of the Abobo population (total population 1.5 million) had left the suburb.

Abidjan
Escalating violence resulted in deaths among civilians and displacement as well as attacks on UN personnel.⁶

The boundaries and names shown and the designations used on all maps do not imply official endorsement or acceptance by the United Nations.

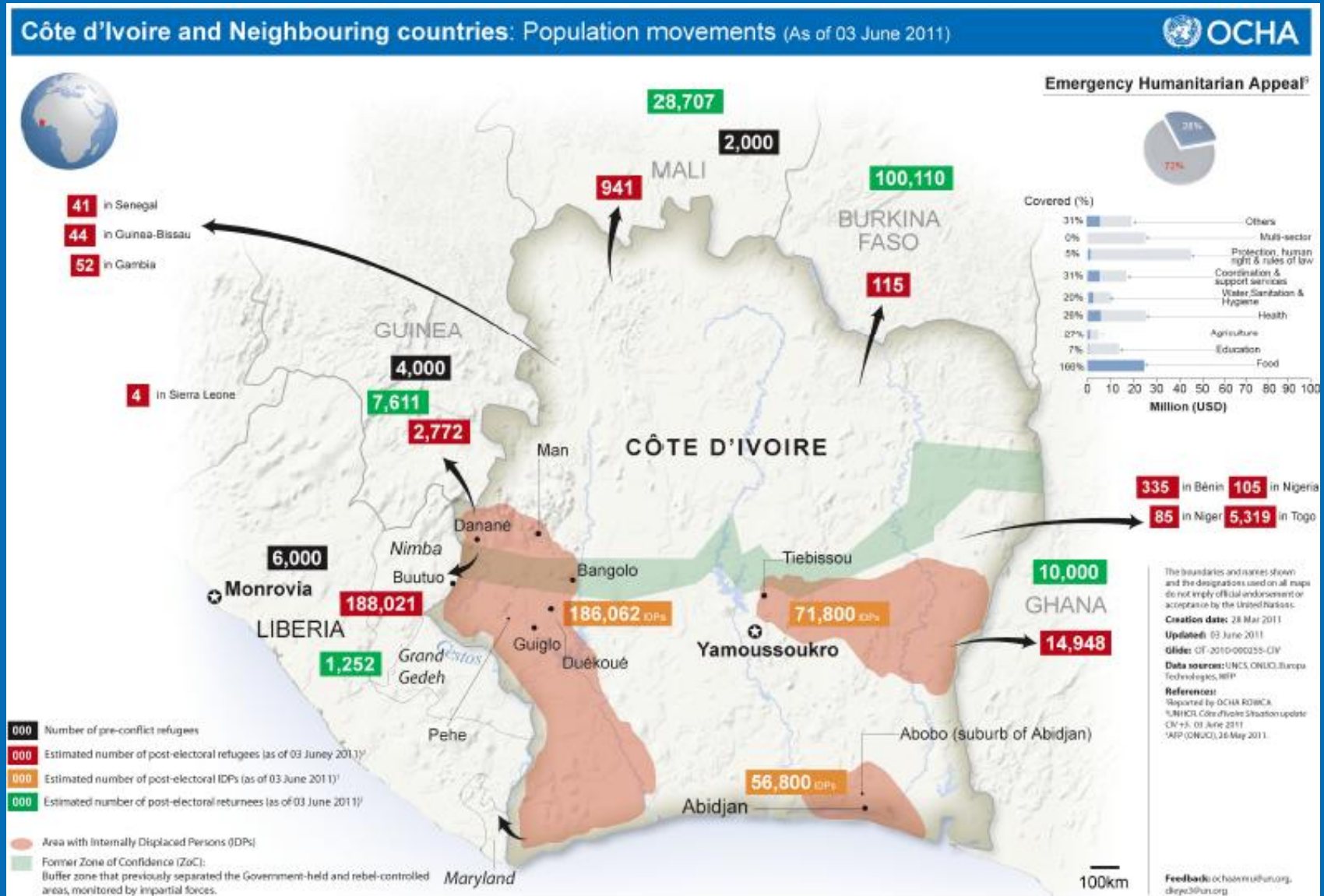
Creation date: 28 Mar 2011
Updated: 26 May 2011
Glider: OT-2010-060255-0V
Data sources: UNCS, ONUC, Europa Technologies, IAFP

References:
¹UN NEWS, Human rights in Côte d'Ivoire deteriorating, report top UN official, 30 Mar 2011.
²UNOCI, Presidential Elections webpage, OCHA.
³Reported by OCHA RWANDA, UNHCR, Côte d'Ivoire Situation Update: CIV v.5, 26 May 2011.
⁴OCHA, Côte d'Ivoire violence a major risk, 13 Jan 2010.
⁵IAFP (UNJCI), 26 May 2011.

Feedback: ocha@un.org, dreyer@un.org, http://ochaonline.un.org, www.reliefweb.int

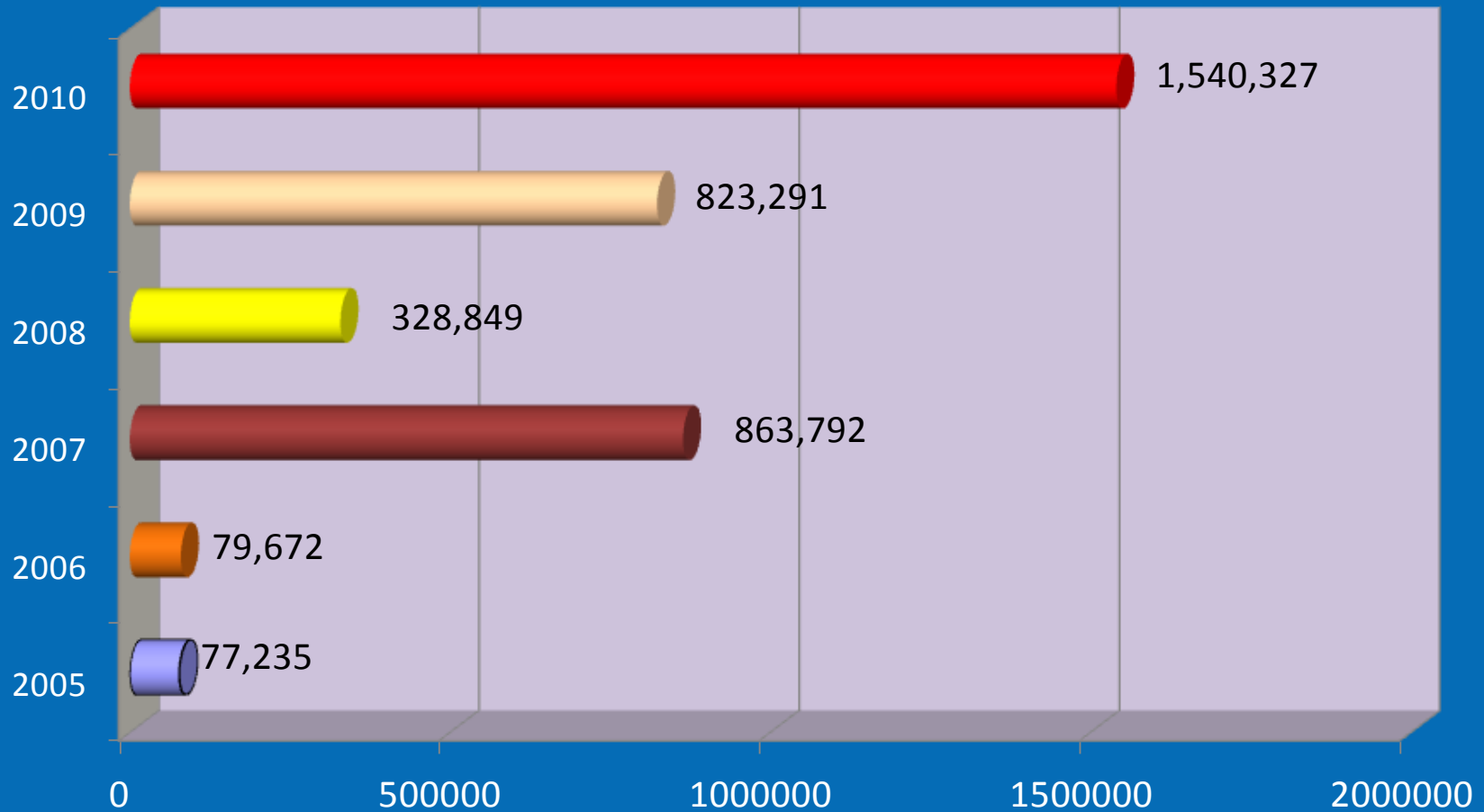
100km

Geo-Information supporting post-electoral crisis in Côte d'Ivoire (3)

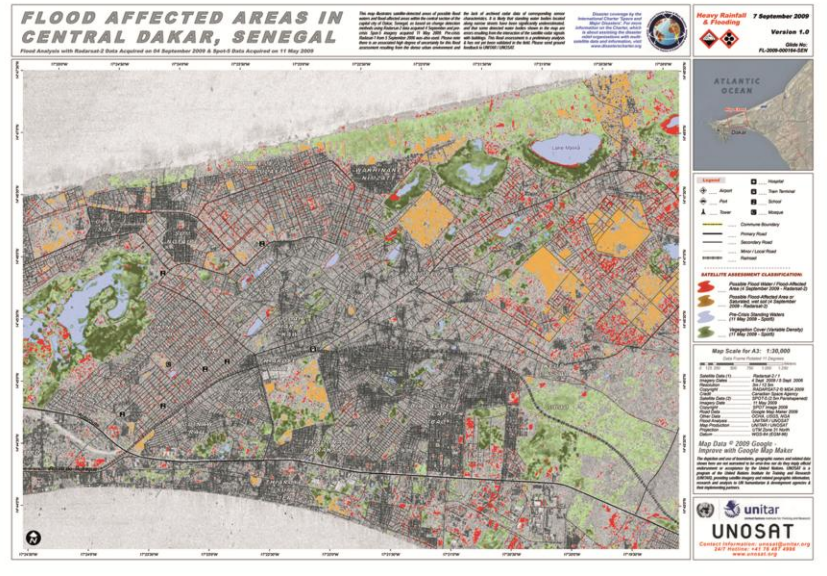
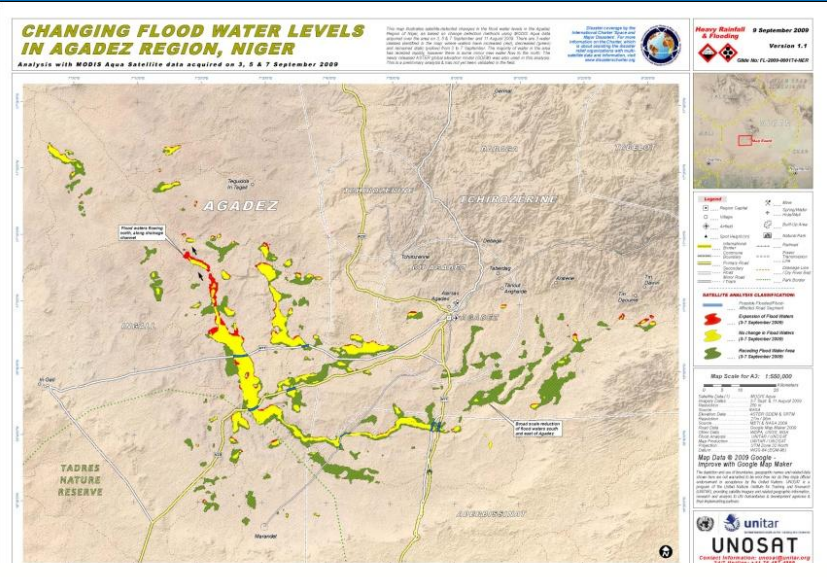


Geo-Information supporting floods management

Affected populations by floods in West Africa (2005-2010)

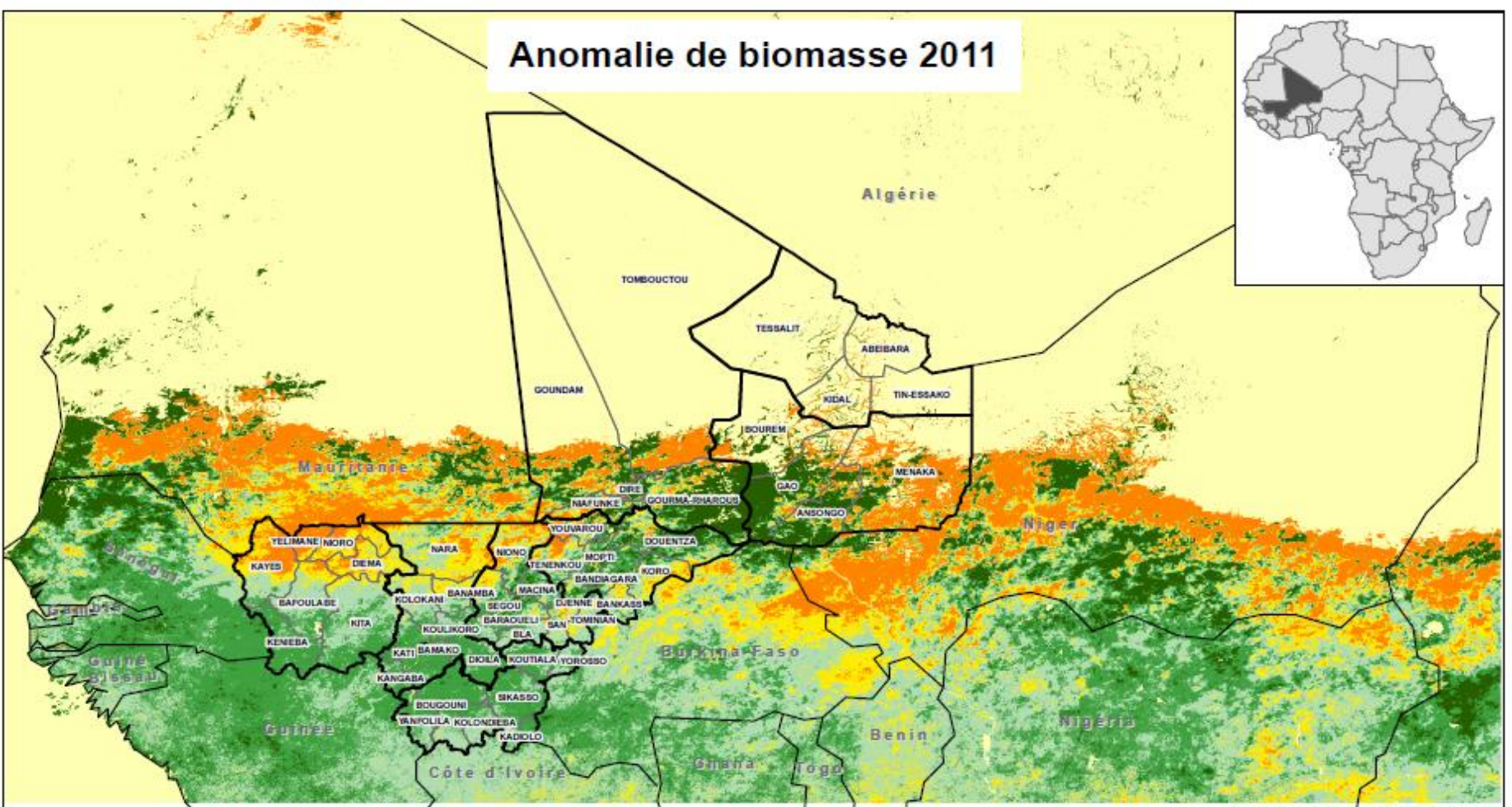
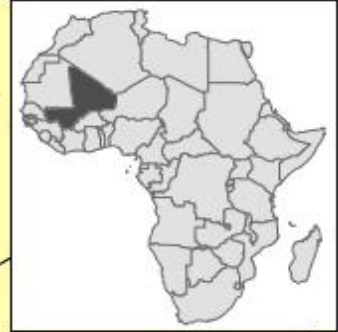


Support in geo-spatial information and rapid mapping (Charter et SAFER)



Preparedness for Emergencies in Outlook

Anomalie de biomasse 2011



LEGENDE

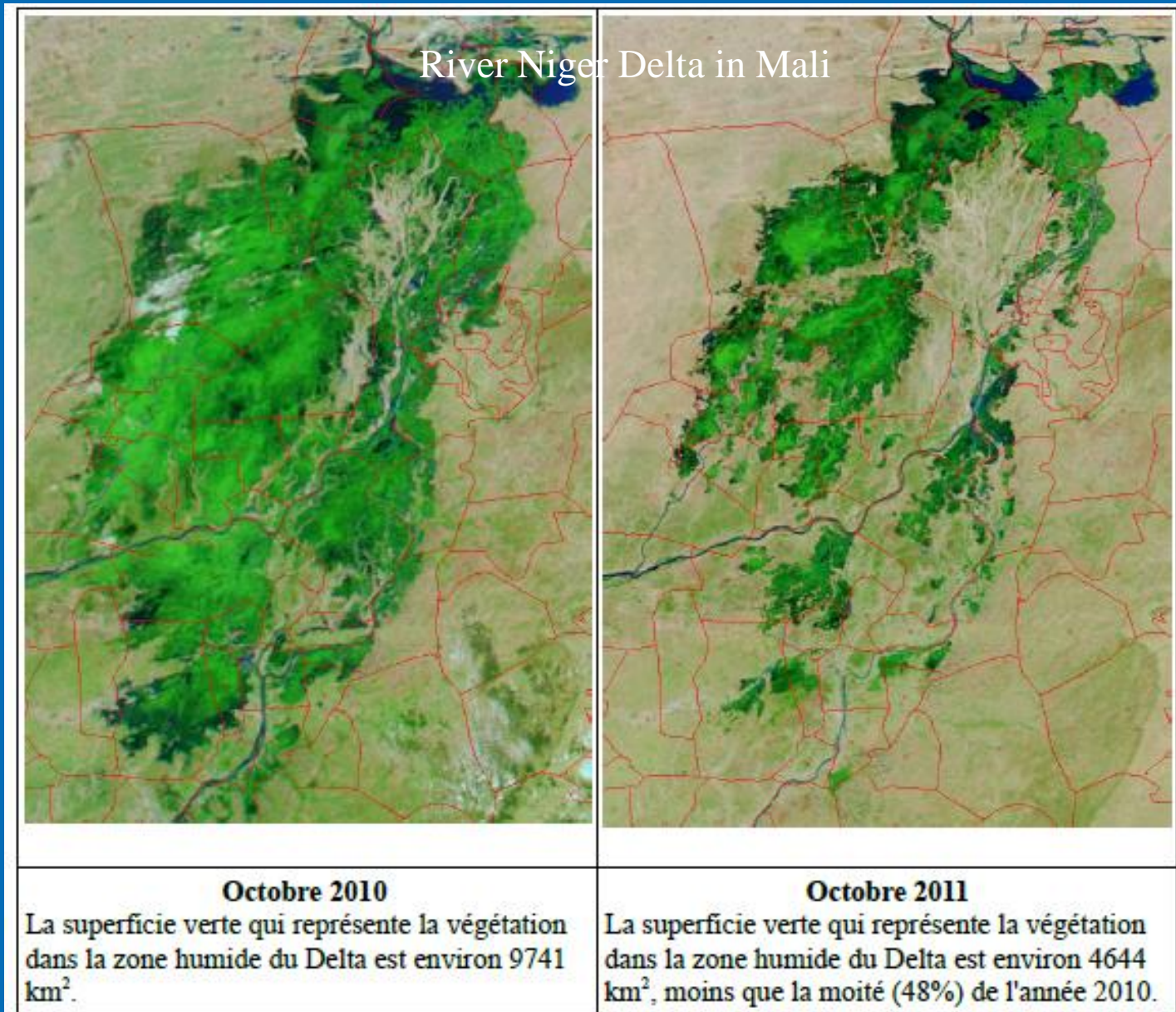
Anomalie	Léger excédent	Région
Net déficit	Net excédent	Cercle
Faible déficit	Peu ou pas de biomasse	Limite pays
Normale		

Source des données: SPOT Vegetation;
Carte produite par le SAP

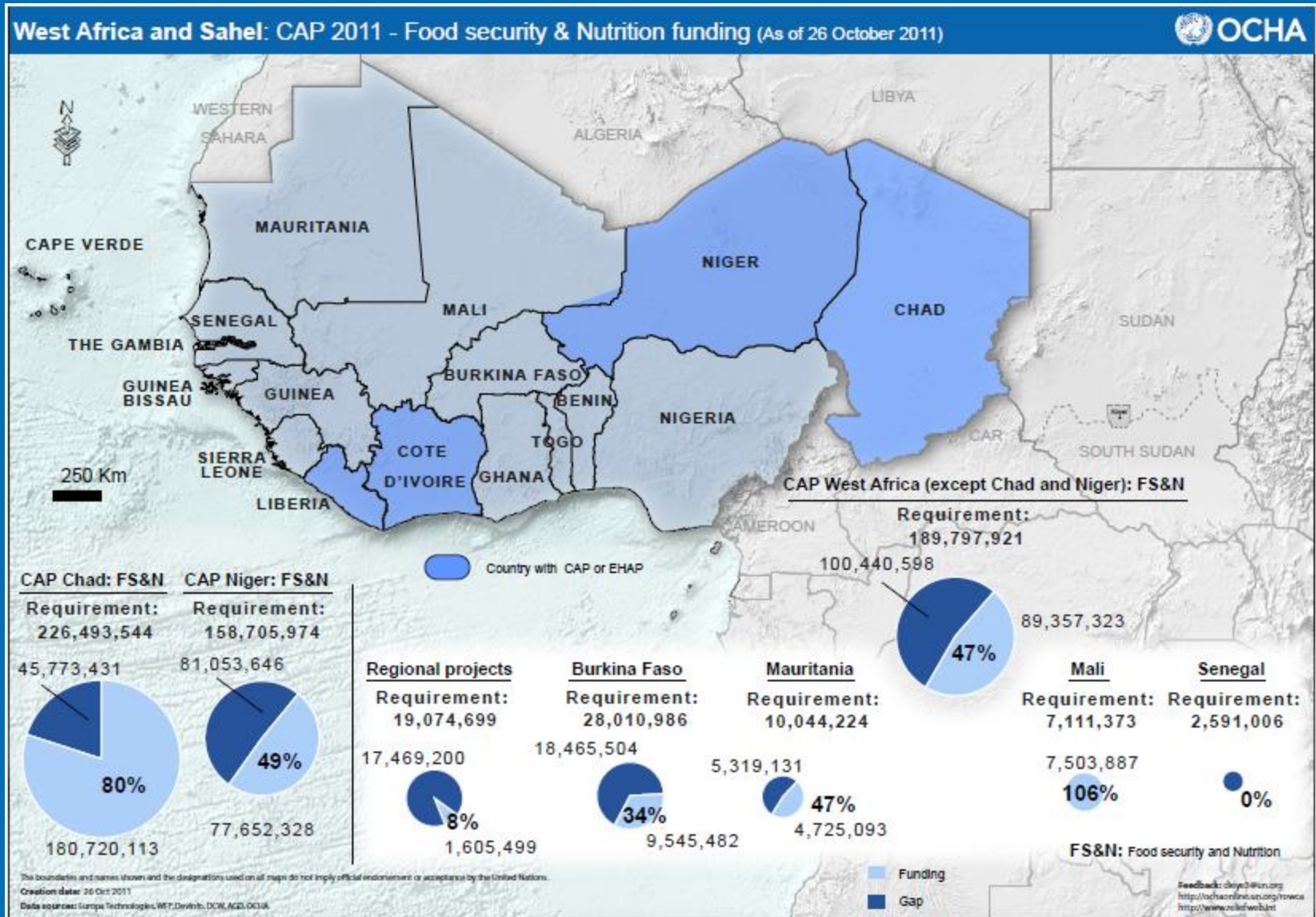


ACTION FAIM
Septembre 2011

Preparedness for Emergencies in Outlook



Preparedness for Emergencies in Outlook: funding tracking



Preparedness for Emergencies in Outlook

- Data preparedness mission for priority countries (Burkina Faso)
- Common Operational Datasets for priority countries (Burkina Faso:
<http://cod.humanitarianresponse.info/country-region/burkina-faso>)
- 3W Dynamic maps: Google Earth and Internet (Burkina Faso)

Burkina Faso

[Discuss](#)

[COD/FOD Focal Point](#)

[Abdoulaye Dieye GIS Specialist UNOCHA/ROWCA - ...](#)

[Read more...](#)

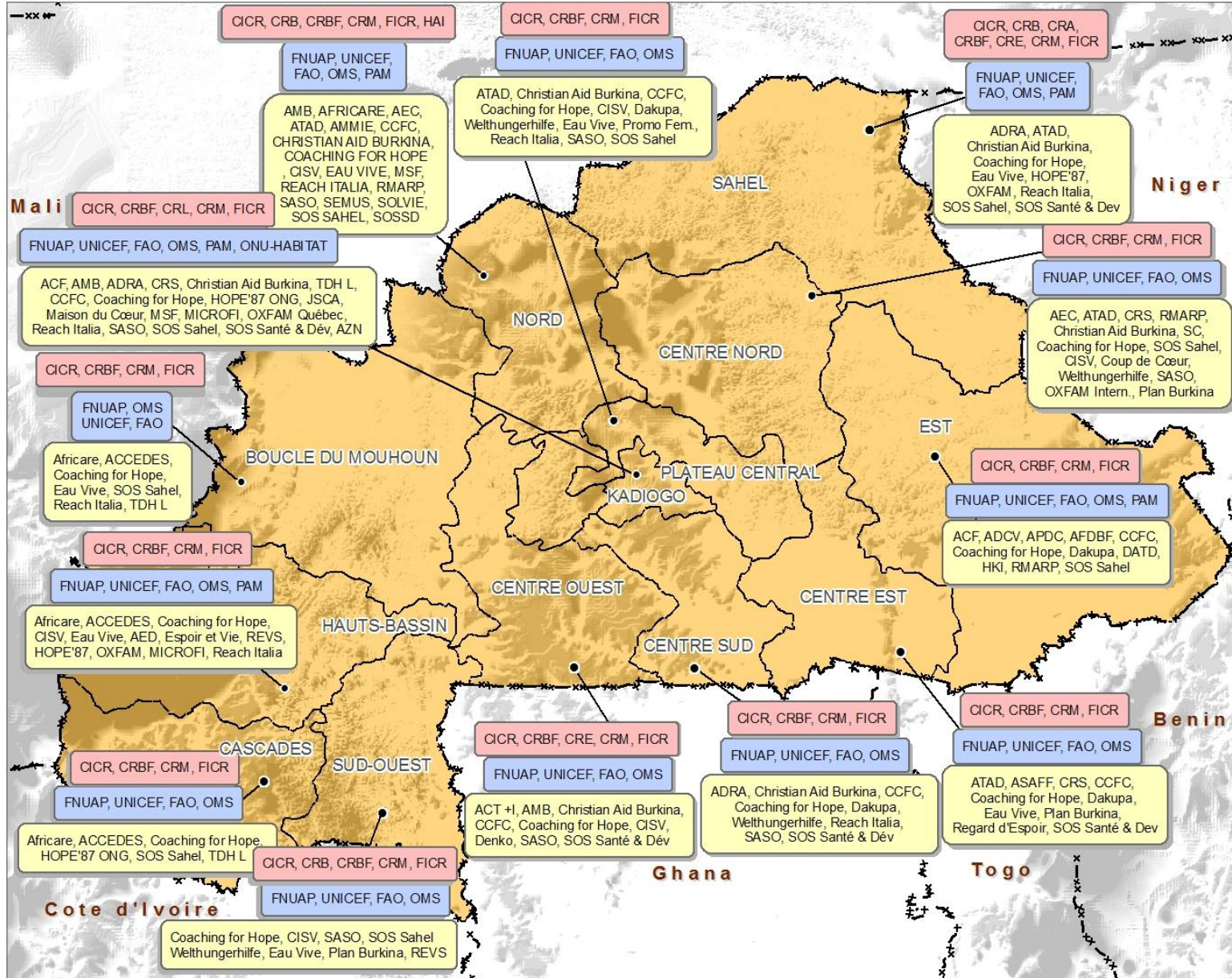
Common Operational Datasets

Administrative Boundaries

Category	Title	Abstract	How To Obtain	Date of dataset	Data Type	Most Recent Known Changes
Multiple Categories	Health Districts	The present geodata represents health districts of Burkina Faso. Source: UNOCHA, 2011 Scale: 1 M	bfa_health_dist.zip	23-Aug-2011	Areas (polygons)	
Multiple Categories	Administrative boundaries	The present geodata represents administrative boundaries (regions and provinces) of Burkina Faso. This is a zipped file for admin level 1 and 2. Source: SALB, 2009 Scale: 1 M	salb_admin.zip	23-Aug-2011	Areas (polygons)	

[Submit another dataset for this theme.](#)

BURKINA FASO - Who is Where (2W)



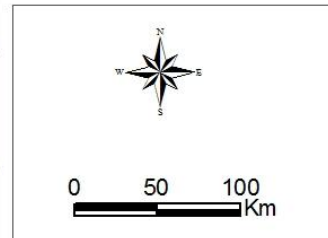
NGO Non Governmental Organization

UN United Nations Agency

IO International Organization

--- Region boundary

---x--- State Boundary



0 50 100 Km

Map Doc Name: OCHA_3WMap_Draft_v6_110104

Creation Date: January, 04th 2011

Projection/Datum: GCS/WGS 1984

Web Resources: <http://ochaonline.un.org/rowca>

Nominal Scale at A4 paper size: 1:4 000 000

Map data source(s): DevInfo, ESRI, USGS, OCHA, UNDP

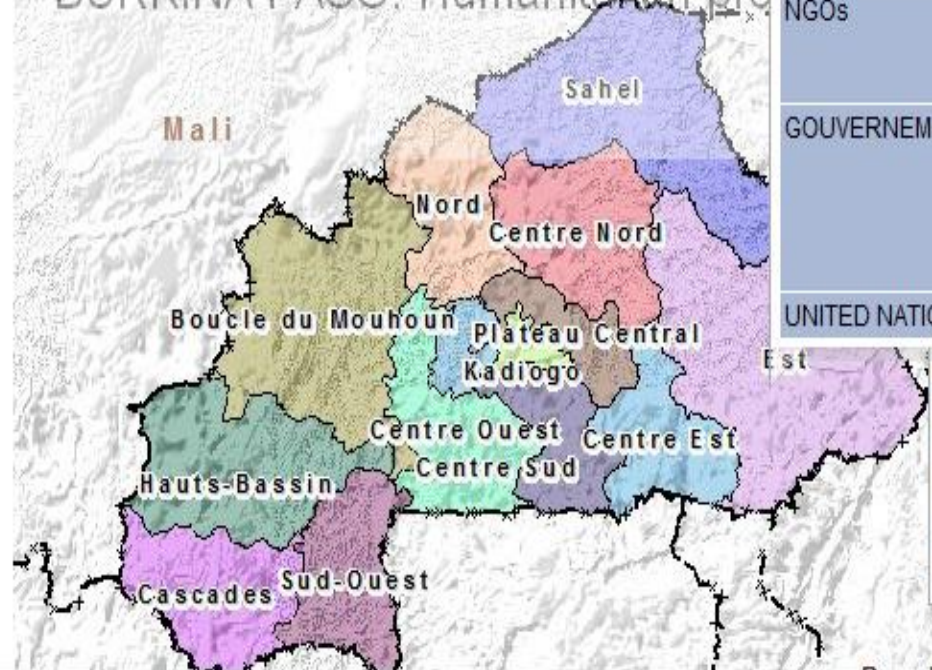
Disclaimers:
The designations employed and the presentation of material on this map do not imply the expression of any opinion whatsoever on the part of the Secretariat of the United Nations concerning the legal status of any country, territory, city or area or of its authorities, or concerning the delimitation of its frontiers or boundaries.

For comments, please contact: diy63@un.org





BURKINA FASO: Humanitarian pre



REGION	Est
NGOs	ACF, ADCV, APDC, AFDBF, CCFC, Coaching for Hope, Dakupa, DATD, HKI, RMARP, SOS Sahel
GOVERNEMENT	CMLSDefense, DLM, DN, DPLVE, DAMSE, DGAEUE, DGRE, DNA Alphabétisation, DNA Santé, DRS, DRAHRH, EESIM, MAHRH, MECV, MRA, PNLCT
UNITED NATIONS	FNUAP, UNICEF, FAO, OMS, PAM

- [Boucle du Mouhoun](#)
- [Cascades](#)
- [Centre Est](#)
- [Centre Nord](#)
- [Centre Ouest](#)

Recherche

Aller à Commerces Itinéraires

Aller à Ex. : Paris

Lieux

 Lieux temporaires

 Main

 Borders

 afr_bfa_103_2002

 africa2003

 africa2003

 Background

 BURKINA FASO: Hu...

Donné Galerie Google Earth >>

 Base de données primaire

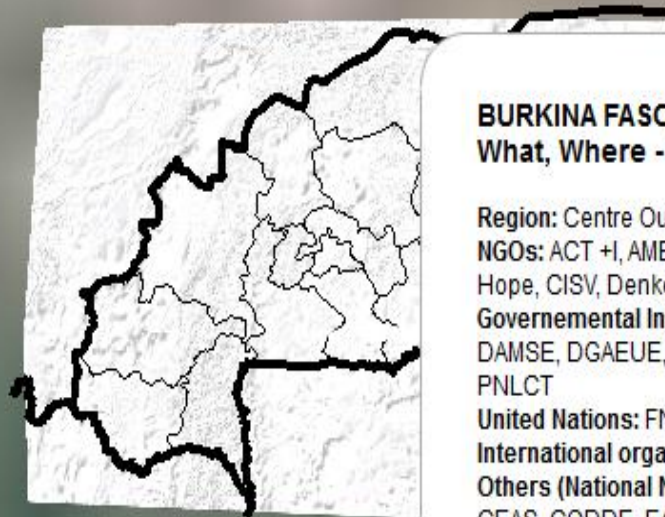
 Frontières et légendes

 Lieux

 Photos

 Routes

 Bâtiments 3D

 Océan


BURKINA FASO: Humanitarian presence (Who, What, Where - 3W)

Region: Centre Ouest

NGOs: ACT +I, AMB, Christian Aid Burkina, CCFC, Coaching for Hope, CISV, Denko, SASO, SOS Santé & Développement,
Governmental Institutions: CMLSDefense, DLM, DN, DPLVE, DAMSE, DGAEUE, DGRE, DNA Santé, MAHRH, MECV, MRA, PNLCT

United Nations: FNUAP, UNICEF, FAO, OMS

International organizations: CICR, CRBF, CRE, CRM, FICR

Others (National NGOs): ABN, AEJT/B, Sebca, ASSOLA, AMUS, CEAS, CODDE, EAD, FWY, OCADES, ES-CEBNF/DAMSE, UMD, UPPFL, Wendbenedo

Data SIO, NOAA, U.S. Navy, NGA, GEBCO

Google Earth





OCHA

United Nations Office
for the Coordination of
Humanitarian Affairs

Coordination Saves Lives

La coordination sauve des vies

La coordinación salva vidas

Координация спасает жизни

بالتنسيق تنقذ الأرواح

致力协调，挽救生命