

Global Data Sources and Data Preparedness

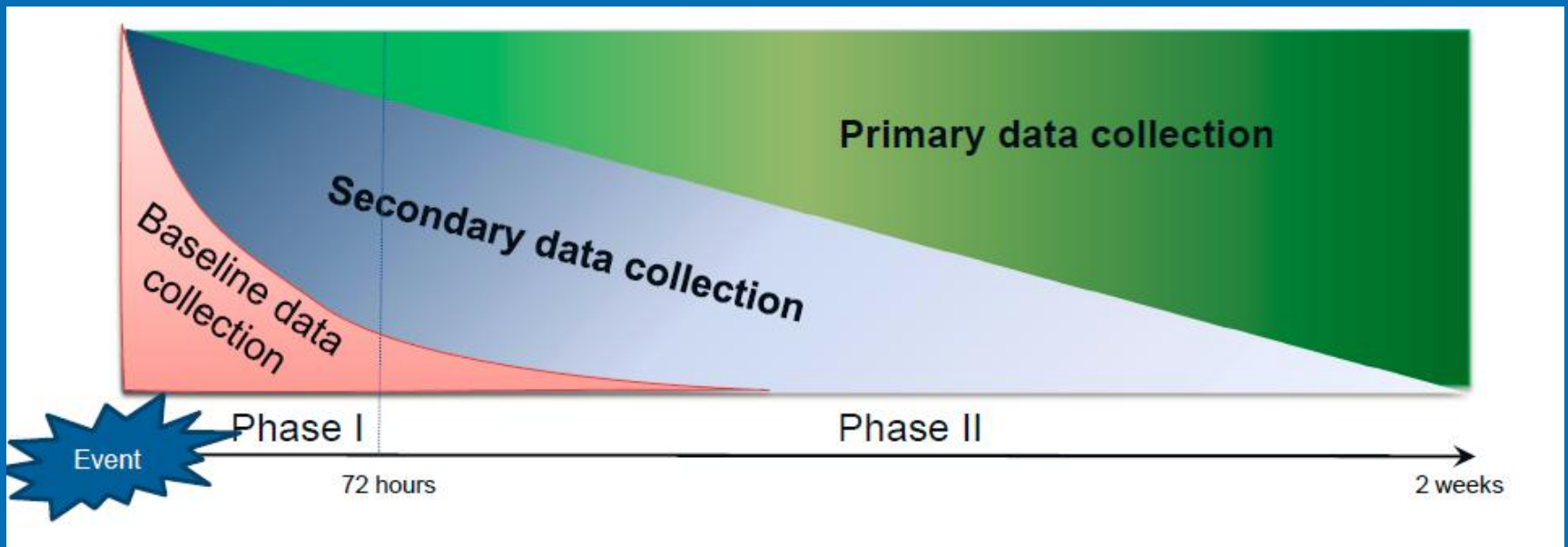
Beijing – 22 Nov 2011



OCHA

Regional Office for Asia-Pacific

Sources of data during the course of an emergency



Common Operational Datasets

Dataset	Mandatory Data Characteristics
Humanitarian Profile (disaggregated by admin level and populated place)	<ul style="list-style-type: none"> -Internally Displaced -Non-displaced affected -Host family/resident community affected -Refugee -Dead -Injured -Missing
Population Statistics	<ul style="list-style-type: none"> -Total population by admin level (Individuals) -Total population by admin level (Number of Households) -- - Age -Sex -Average family size by admin level -Unique identifier
Administrative Boundaries (Geographic) admin level 1, 2, 3, 4	<ul style="list-style-type: none"> -Unique identifier (P-Code) -Name
Populated Places (Geographic)	<ul style="list-style-type: none"> -Unique identifier (P-Code) -Names -Size classification -Population statistics -Status if capital of administrative division -Type (Village, spontaneous settlement, collective center, planned settlement)
Transportation Network (Geographic)	<ul style="list-style-type: none"> -Roads (Classified by size) -Railways -Airports/helipads -Seaports
Hydrology (Geographic)	<ul style="list-style-type: none"> -Rivers (Classified by size) -Water bodies
Hypsography (Geographic)	<ul style="list-style-type: none"> -Elevation -Resolution

Common operational datasets are predictable, core sets of data needed to support operations and decision-making for all actors in a humanitarian response.

Don't forget the FODs!

OCHA's COD Registry

<http://cod.humanitarianresponse.info/>

HumanitarianResponse Common And Fundamental Operational Datasets Registry

The Humanitarian Community
WebPortal

[Home](#) [Country/Region](#) [About the COD/FOD](#) [Share](#) [Terms of Use](#) [Contact Us](#) [Search](#)

[EN](#) [FR](#) [ES](#)

You are here: [Home](#)

[Register](#) [Login](#)

Most Active Countries/Regions

[Eritrea](#)

[Ethiopia](#)

[Kenya](#)

[Libya](#)

[Somalia](#)

[Uganda](#)

Latest announcements

[Refugee locations related to the 2011 drought crisis](#)

Mon, 07/18/2011 - 16:45

The locations of refugee camps associated with the 2011 drought crisis have been posted by UNHCR on the page for the country where the refugee camps are actually located. Check the FOD section of...

[Read more...](#)

Most Recent Changes To Common Operational Datasets

[Liberia: River](#)

rivers in and around Liberia

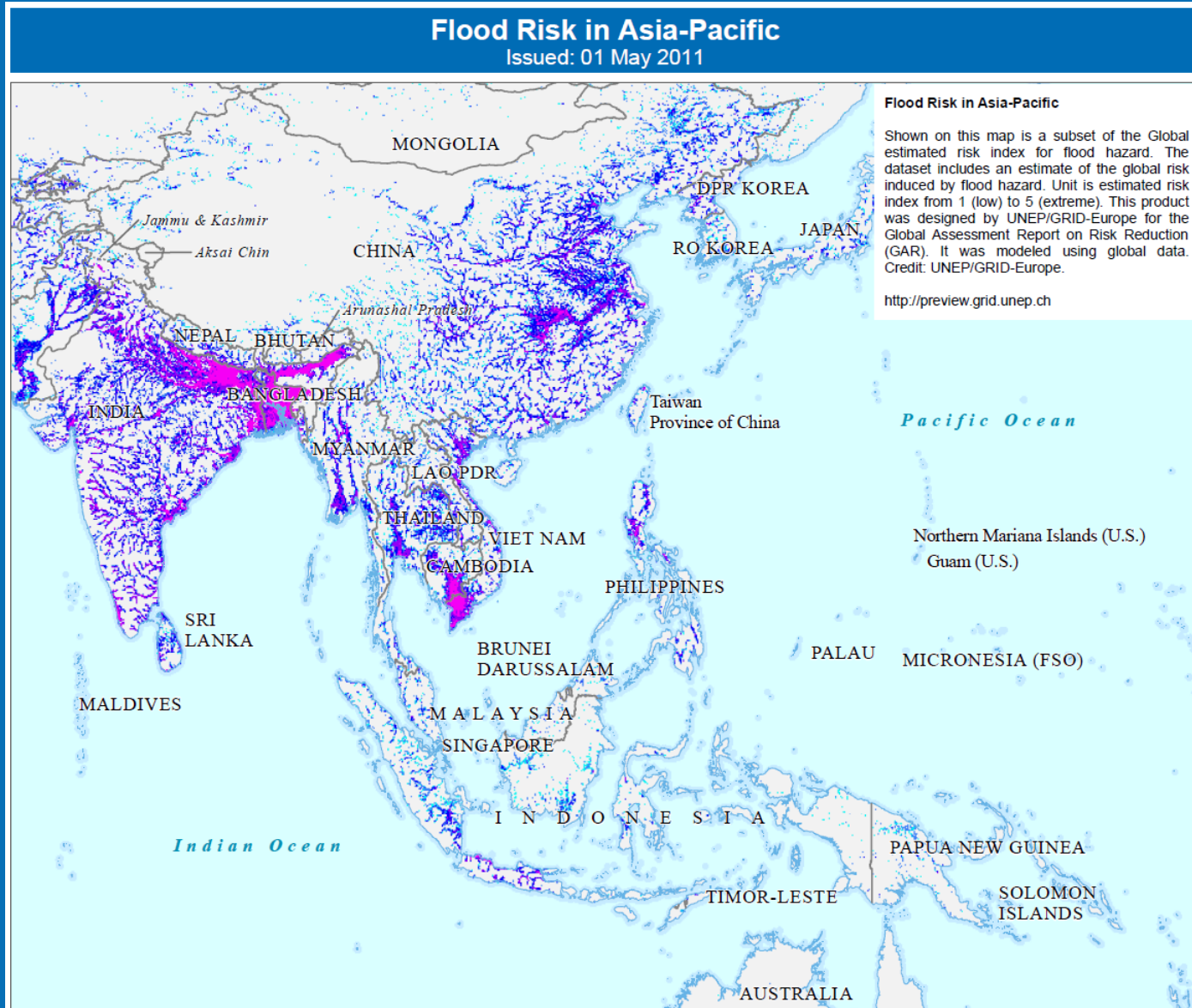
Country/Region: [Liberia](#)

[Liberia: Lakes](#)

lake represents lakes in and around Liberia.

Country/Region: [Liberia](#)

Baseline/historical data on Hazards



GAR – Global Assessment Report

Global Risk Data Platform

<http://www.preventionweb.net/english/hyogo/gar/2011/en/what/rdp.html>

Maps and DATA

- Cyclones
- Drought
- Earthquakes
- Fires
- Floods
- Landslides
- Tsunamis
- Volcanoes
- Multi-hazard

The screenshot shows the Global Risk Data Platform website. At the top, there is a navigation menu with links for Home, Map, Graphs, Data-Download, Data-Extraction, OGC-Webservices, Advanced tools, Help, and About. The language is set to English. The main content area features a 'PREVIEW' section with a text description of the platform's purpose and a map interface. The map shows a world map with green lines indicating hazard paths. Below the map, there are controls for zooming, map extent, and map legends. The 'SERVICES FOR GIS PROFESSIONALS' section includes links for Graphs, Download Data, Extract Data, and OGC Webservices. The 'PARTNERS' section lists UNEP/GRID-Europe and UNISDR.

Global Risk Data Platform English | Français

Home Map Graphs Data-Download Data-Extraction OGC-Webservices Advanced tools Help About

PREVIEW

The PREVIEW Global Risk Data Platform is a multiple agencies effort to share spatial data information on global risk from natural hazards. Users can visualise, download or extract data on past hazardous events, human & economical hazard exposure and risk from natural hazards. It covers tropical cyclones and related storm surges, drought, earthquakes, biomass fires, floods, landslides, tsunamis and volcanic eruptions. The collection of data is made via a wide range of partners (see About for data sources). This was developed as a support to the Global Assessment Report on Disaster Risk Reduction (GAR) and replace the previous PREVIEW platform already available since 2000. Many improvements were made on the data and on the application.

Info: Events Hazard/Risk
From: 2001 To: 2008
 Cyclones - winds
 Cyclones - surges
 Droughts
 Earthquakes
 Fires
 Floods
 Tsunamis
 Volcanoes
Start a new map
Print your map
Bookmark your map
Email your map

Zoom to: Select a country...
Map size: 565 x 272
Map extent: Min: -124.53 Max: -30.95
Ymin: -2.25 Ymax: 42.95
Coordinates: Lat: 20.85 / Long: -124.53

Map legends
Layers
Countries
Tropical Cyclones
Wind intensity (SI Cat)
1
2
3
4
5
Info

SERVICES FOR GIS PROFESSIONALS

GRAPHS Draw a choice of relevant interactive graphs issued from the GAR report. Go	DOWNLOAD DATA Browse through the different hazards datasets and download it. Go	EXTRACT DATA Extract the selected dataset for a country or a region. Go	OGC WEBSERVICES Get the data directly in your GIS client (desktop and/or web app). Go
---	--	--	--

PARTNERS

UNEP/GRID-Europe
UNEP GRID Europe

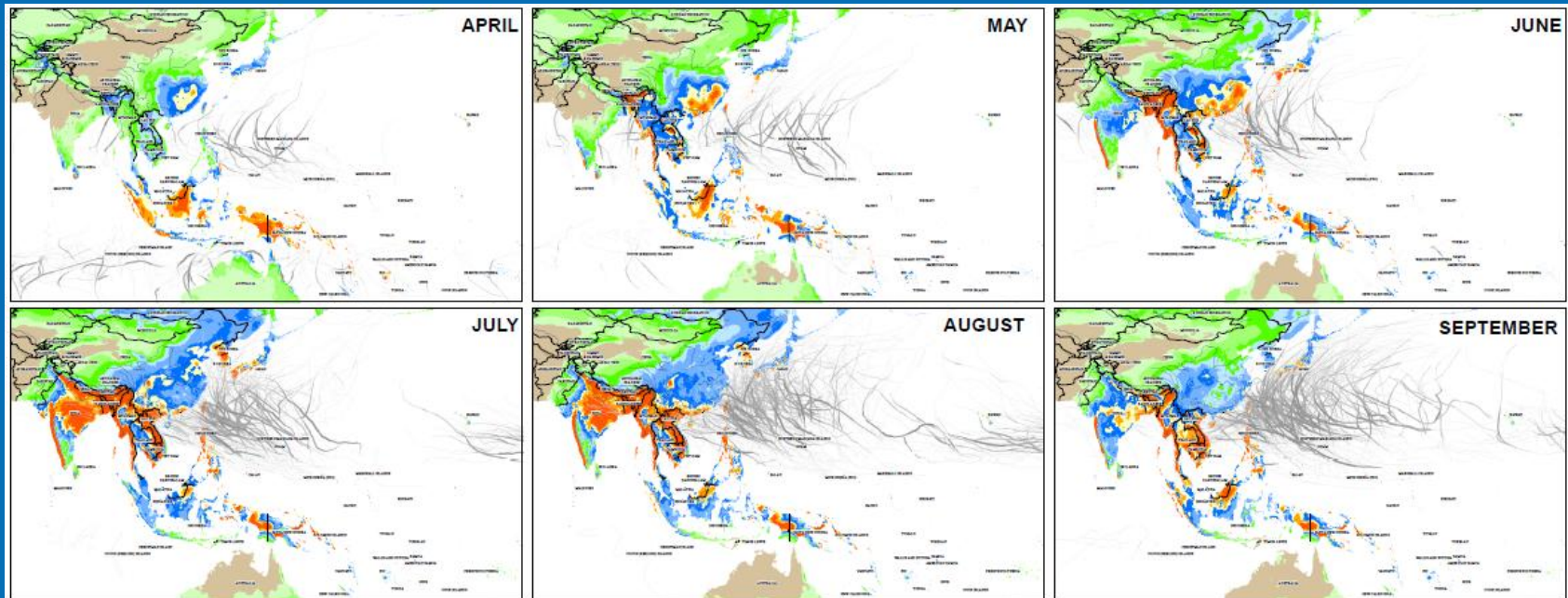
UNISDR
International Strategy
for Disaster Reduction
ISDR



There are many other great sources of information on hazard mapping

Using Historical data

i.e. Historical Rainfall data (WORLDCLIM)
and Historical Storm tracks (UNISYS)



Doesn't have to be a map

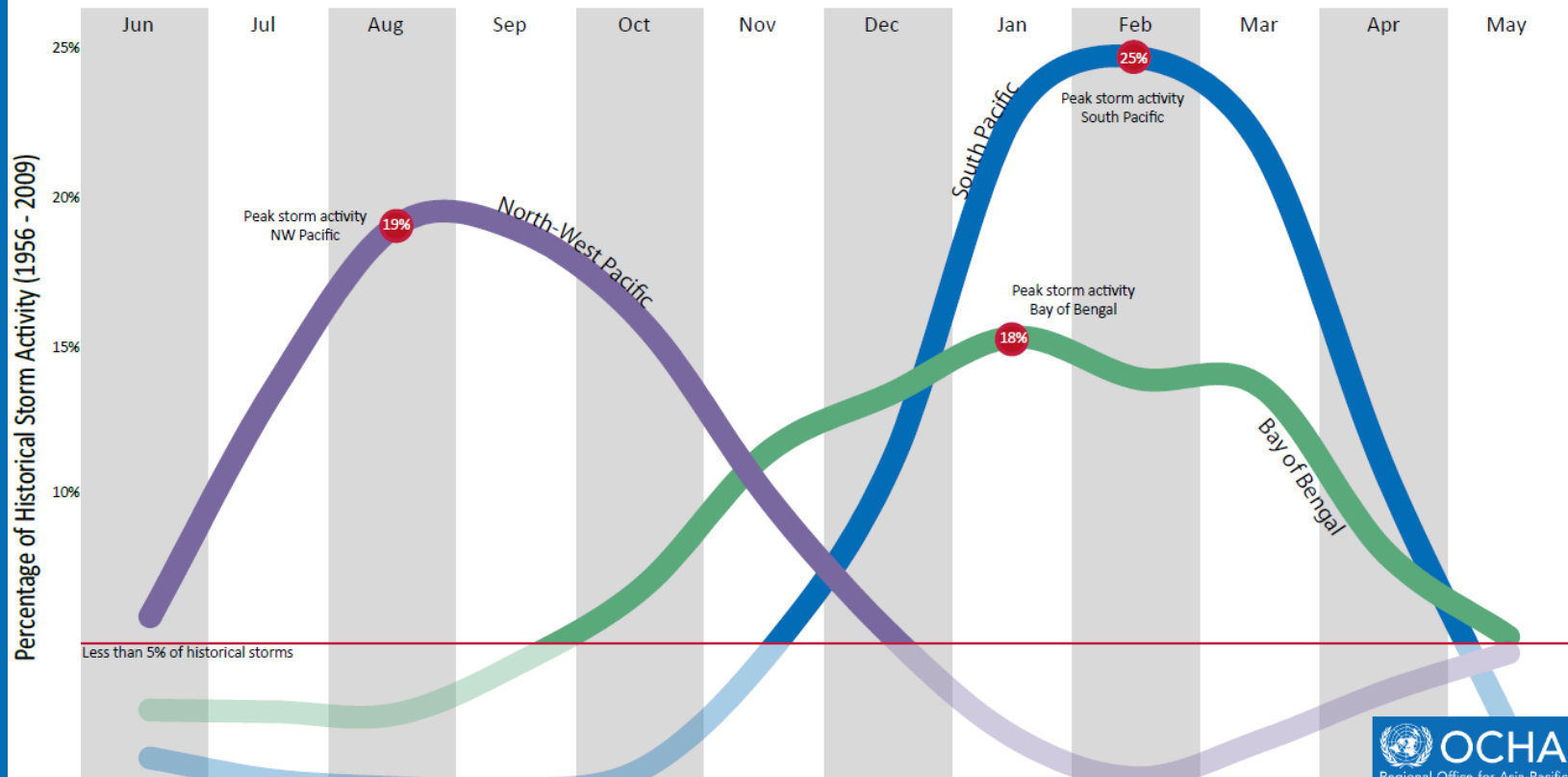
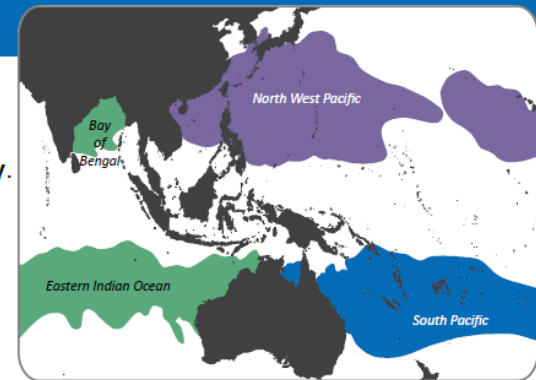
Storm Seasons in the Asia-Pacific

As of August 2011

- Storm season in the **South Pacific** runs from **November to April**. **February** is the **peak month** for storm activity.
- Storm season in the **Eastern Indian Ocean/Bay of Bengal** runs from **September to May**. **January** is the **peak month** for storm activity.
- Storm season in the **Northwest Pacific** runs from **June to December**. **August** is the **peak month** for storm activity.

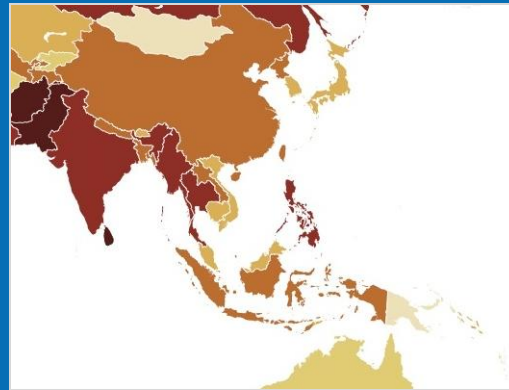
The graph below was created by calculating the historical storm activity for each region and for each month as a percentage of the total for that region. For example approximately 25% of all storm activity in the South Pacific occurred in February, while nearly 0% took place in August and September.

Data Source: UNISYS Storm tracks 1956-2009



What about Vulnerability?

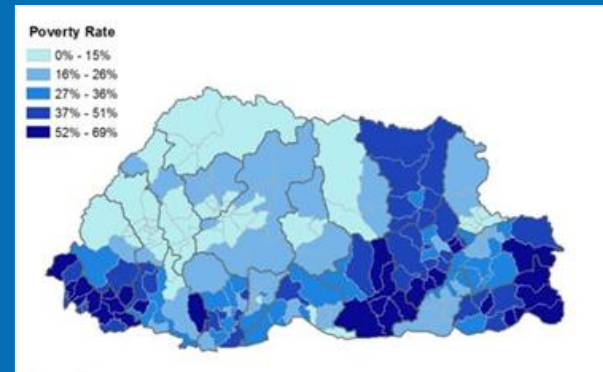
Conflict



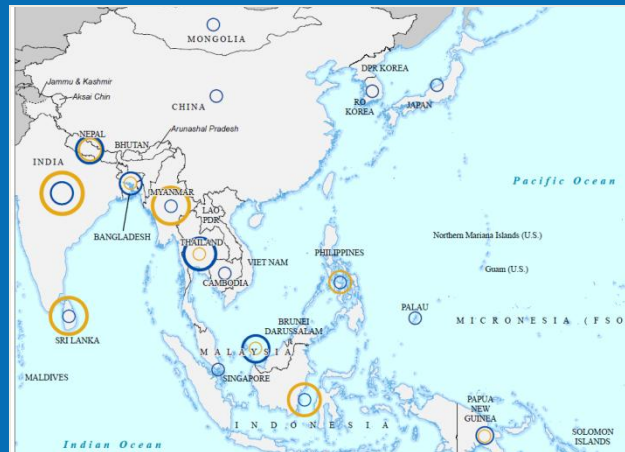
Heidelberg Institute for International Conflict Research

Poverty

World Bank



Displacement



IDMC and UNHCR

Atlas for visualizing hazards

Metadata catalog

Alert system

www.pdc.org



Global Hazards Atlas



Is primarily a disaster alert system.

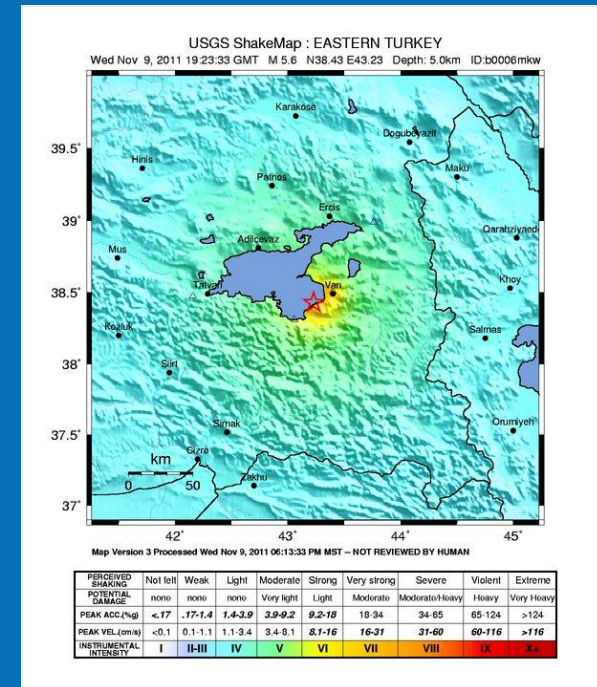
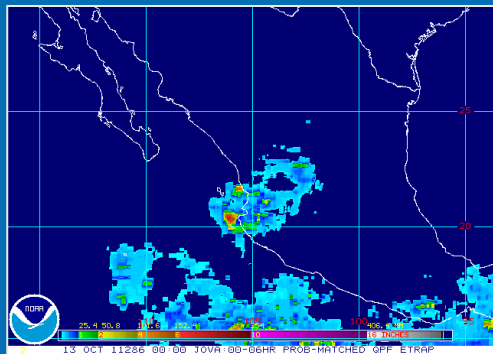
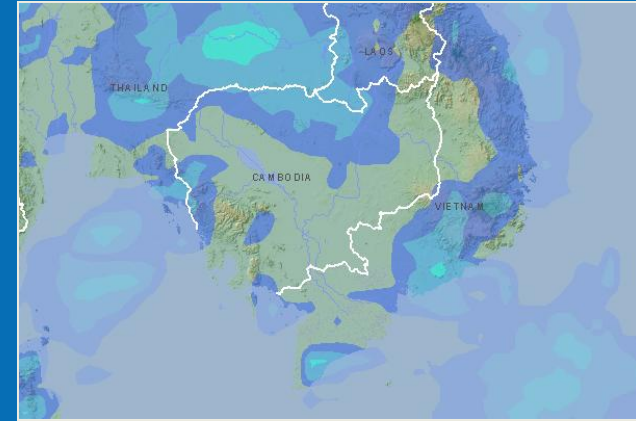


Notifies user of disaster according to user-defined criteria.

Assigns magnitude to events based on magnitude of the event and baseline data (population, resilience to natural disasters, proximity of key infrastructure, etc.)

Pulls information and maps from other sources.

www.gdacs.org



 [Horn of Africa Crisis - 2011](#)

Headlines

Direct aid transfer brings immediate benefits to the most poor and vulnerable

Somalia: People fleeing to seek refuge following declarations of aerial strikes


Top UN officials stress need to boost protection of civilians in armed conflict

Mexico: Widespread rights abuses in 'War on Drugs' - Human Rights Watch report

Southeast Asia: New initiative seeks to strengthen fiscal resilience to natural disasters

En Honduras, las lluvias sacan a flote la pobreza y la vulnerabilidad

CAR: Number of displaced within the country decreased

 Looking for a job? [Search here.](#)

Updates by Country (last 24 hours)



Jobs

Emergency Food Security & Logistics Manager

 09 Nov 2011

Emergency Grants Manager (part-time)

 09 Nov 2011

Emergency Response Field Manager (part-time)

 09 Nov 2011

[View all jobs](#)

Maps



Turkey

Turkey Earthquake - Turkish Humanitarian Response (as of 23 October 2011)



[View all maps](#)

Featured Disasters



Horn of Africa Crisis - 2011



Pakistan: Floods - Jul 2011



Niger: Cholera Outbreak - Oct 2011



Turkey: Earthquake - Oct 2011



Somalia: Floods - Oct 2011



Tropical Depression 12-E - Oct 2011



Cambodia: Floods - Sep 2011



Viet Nam: Floods - Sep 2011



Colombia: Floods and Landslides - Sep 2011



Thailand: Floods - Aug 2011



Kenya: Floods - Aug 2011



Afghanistan: Drought - Jul 2011

Tools



Download a Briefing Kit



ReliefWeb RSS Feeds



Email Subscriptions



Feedback and Support Forum



Financial Tracking Service



GDACS

Updates



Sri Lanka

'In reality there may be torture but our law against torture is fine'

 10 Nov 2011

 Report — Asian Human Rights Commission

The world's largest repository for humanitarian information.

- Situation reports
- Maps
- Press releases
- Funding
- Vacancies

www.reliefweb.int

Thank you for your attention!

John Marinos
Information Management Officer
marinosj@un.org

