

Geoportal.DE

–insight into the spatial data infrastructure of Germany (GDI-DE)

Sebastian Schmitz
Federal Agency for Cartography and Geodesy
Coordination GDI-DE

- **GDI-DE at a glance**
 - **Organisational background**
 - **Technical architecture**
- **Geoportal.DE**
 - **Purpose**
 - **Requirements**
 - **Implementation overview (more details in SESSION 3, WhereGroup)**
 - **Operation**
- **Summary**

1 Nation (Federation)

with parliament (legislature),
administration (executive
authority), judicial power

16 States („Länder“)

each with parliament
(legislature), administration
(executive authority), judicial
power

14.000 Municipalities

with many rights of self-
government

They all have spatial data.

Make it available!



Political Level (E-Government)

National SDI (GDI-DE) is coordinated by a common **Steering Committee**

The Steering Committee comprises delegates of **all levels of public authority**

- 2 Federal Ministries (national)
- 1 each State = 16 (regional)
- 3 Associations of Municipalities (local)

Operational support: **Coordination Office**

Steering Committee GDI-DE

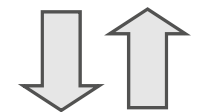
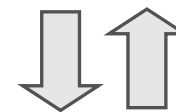
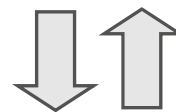


*decisions,
work orders*



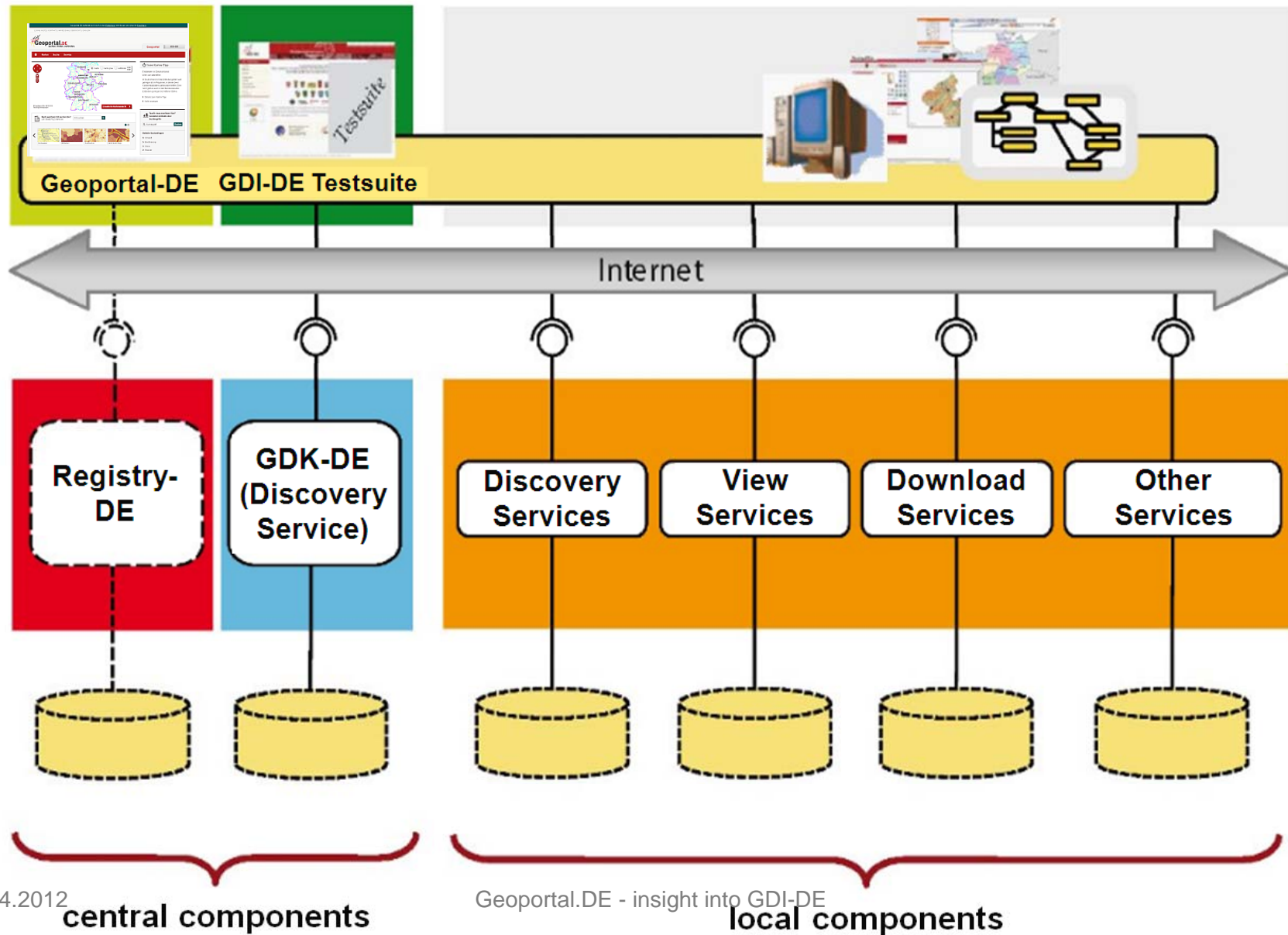
*proposals,
reporting*

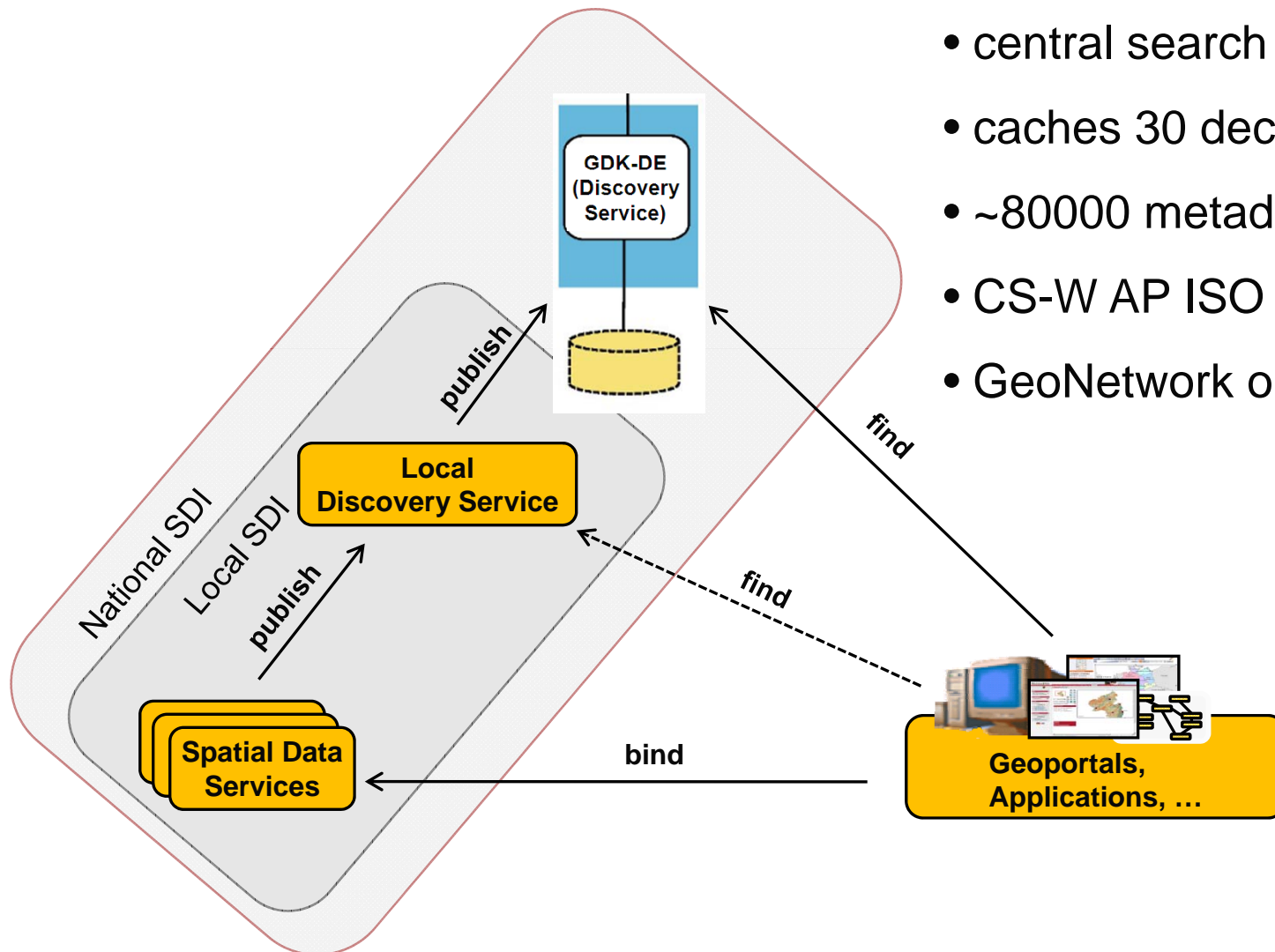
Coordination Office GDI-DE



NETWORK

Federation, States, Municipalities,
Working Groups, Experts, Universities, Private sector, ...





- central search engine for GDI-DE
- caches 30 decentral catalogues
- ~80000 metadata sets
- CS-W AP ISO 1.0
- GeoNetwork opensource

<http://ims7.bkg.bund.de/geonetwork/srv/en/csw?SERVICE=CSW&VERSION=2.0.2&REQUEST=GetCapabilities>

Purpose

- Find all spatial data sets and services across administrative levels and domains from Germany
- Showcase GDI-DE
- Make GDI-DE more transparent

- primarily for working world (public administration, business, academia); open to general public also

Requirements

- User-friendly, Web-like, straightforward
- High performance, no sandglass experience
- Search within GDK-DE data pool, i.e. GDI-DE



- Content Management System (CMS): CoreMedia/Government Site Builder

- Geo-Clients – Open Source
 - Integrated into CMS
 - Viewer - Mapbender3
 - Geodata search: Apache Solr, standalone search client
 - More details SESSION 3 on Wednesday afternoon

- Content from Spatial Web Services from GDI-DE

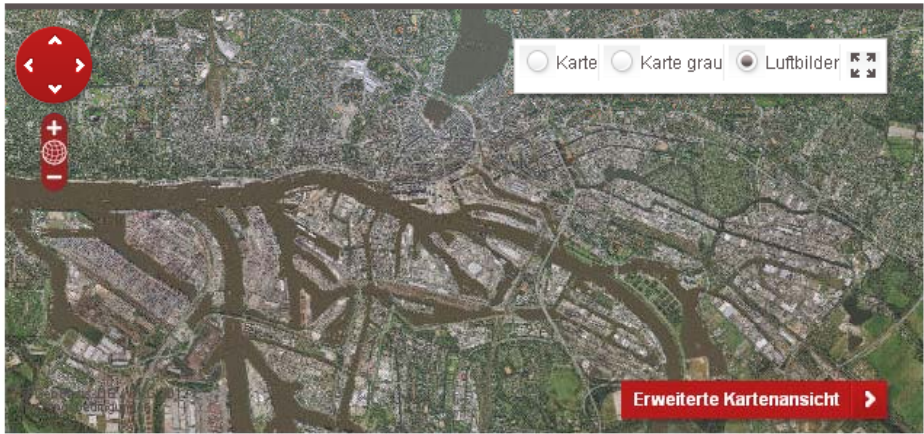
Geoportal.DE befindet sich noch in der Pilotphase. Wir freuen uns über Ihr Feedback.

LOGIN | HILFE | KONTAKT | IMPRESSUM | ÜBERSICHT | ENGLISH

Geoportal.DE
suchen. finden. verbinden.

Geoportal GDI-DE

Karten Suche Service



Erweiterte Kartenansicht

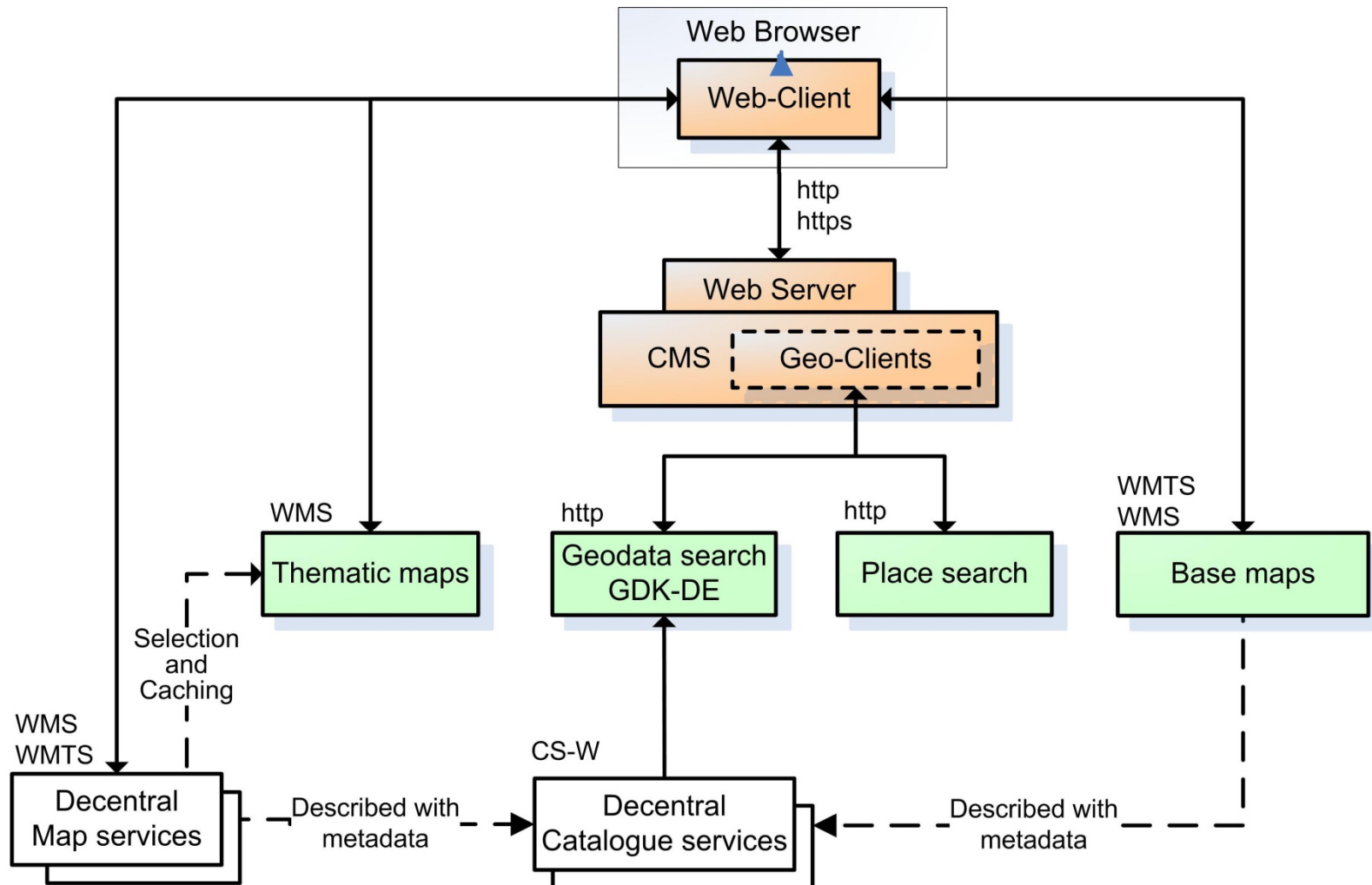
Nach welchem Ort suchen Sie?
z.B. Stadt, PLZ, Adresse Hamburg-Altona

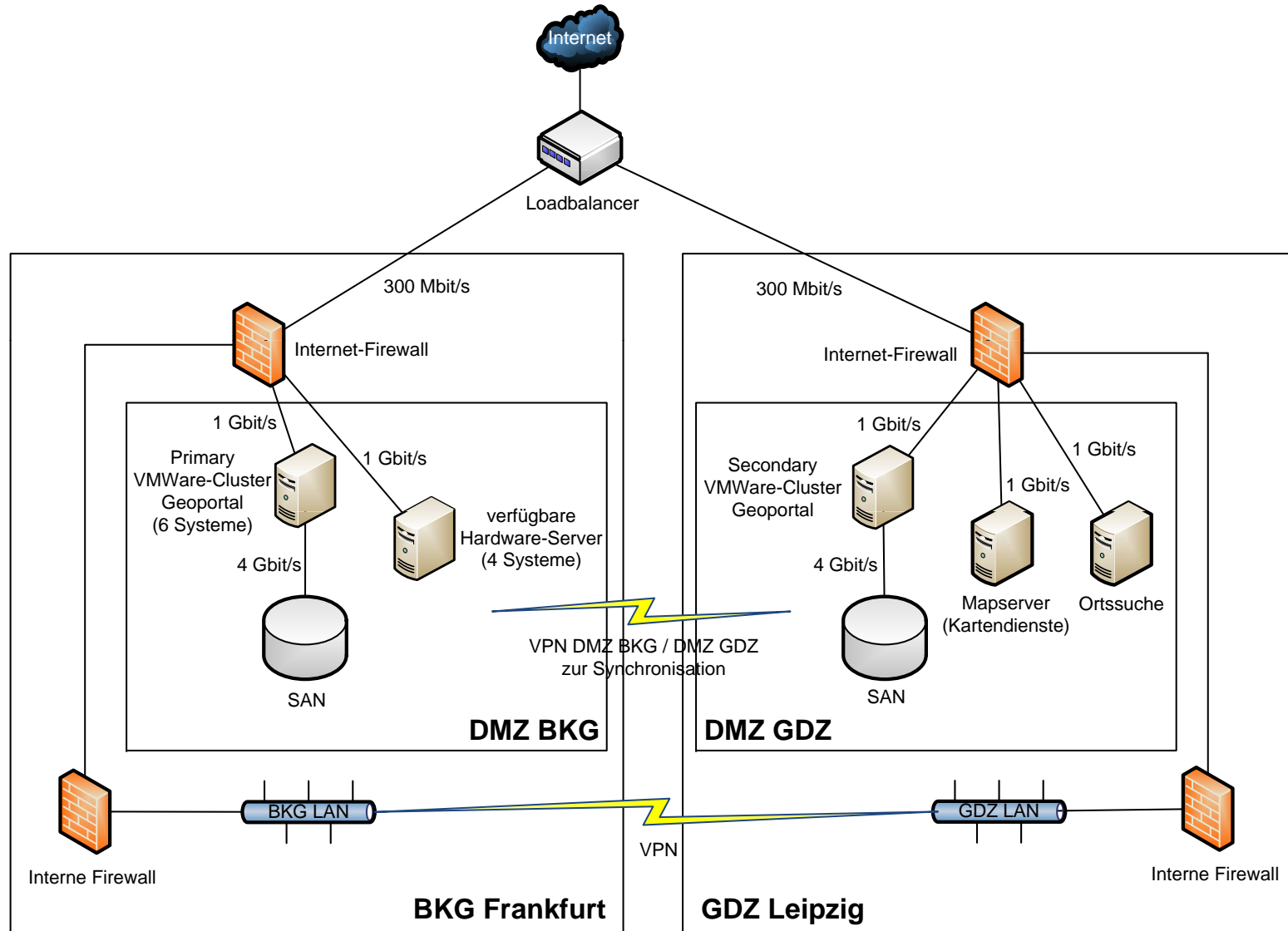
Nach was suchen Sie?
Geodaten & Inhalte über Suchbegriffe

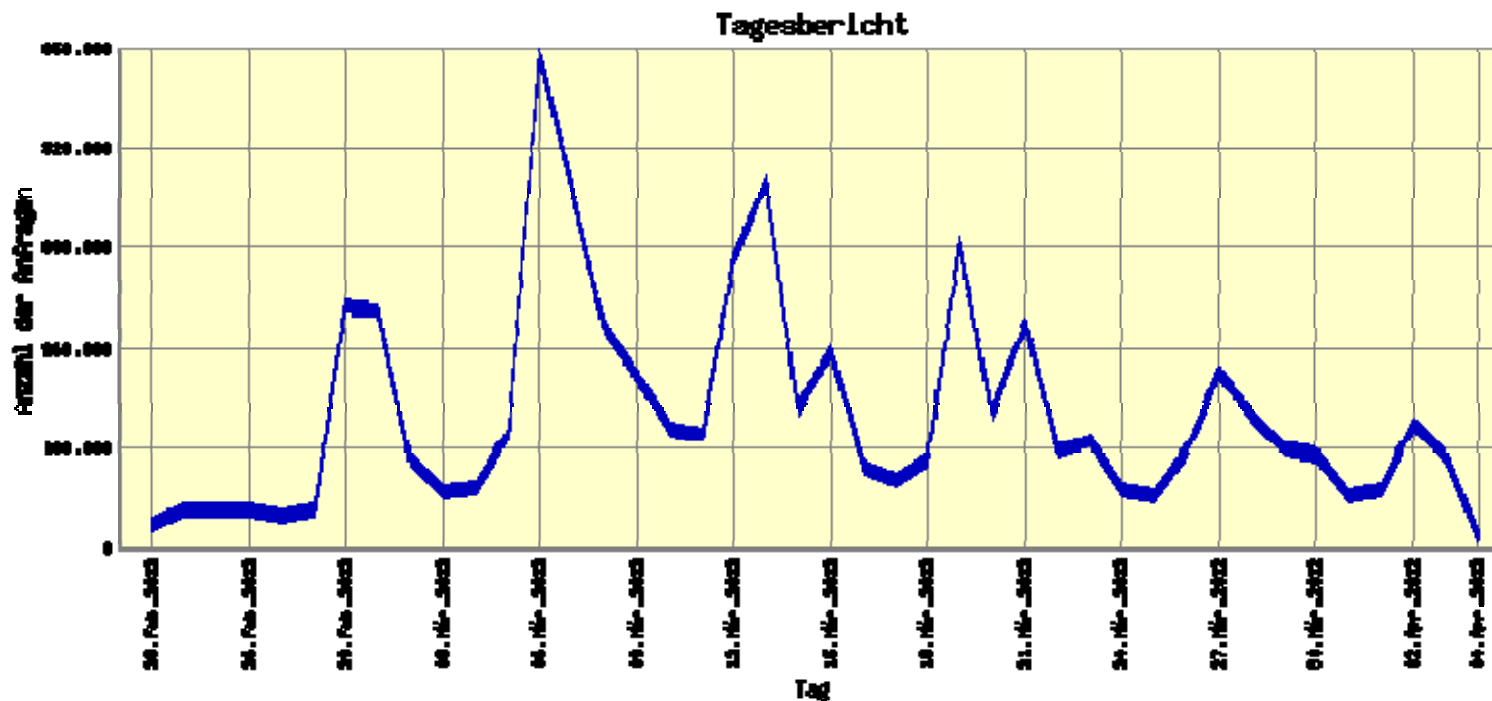
Suchbegriff Suchen

Beliebte Suchanfragen

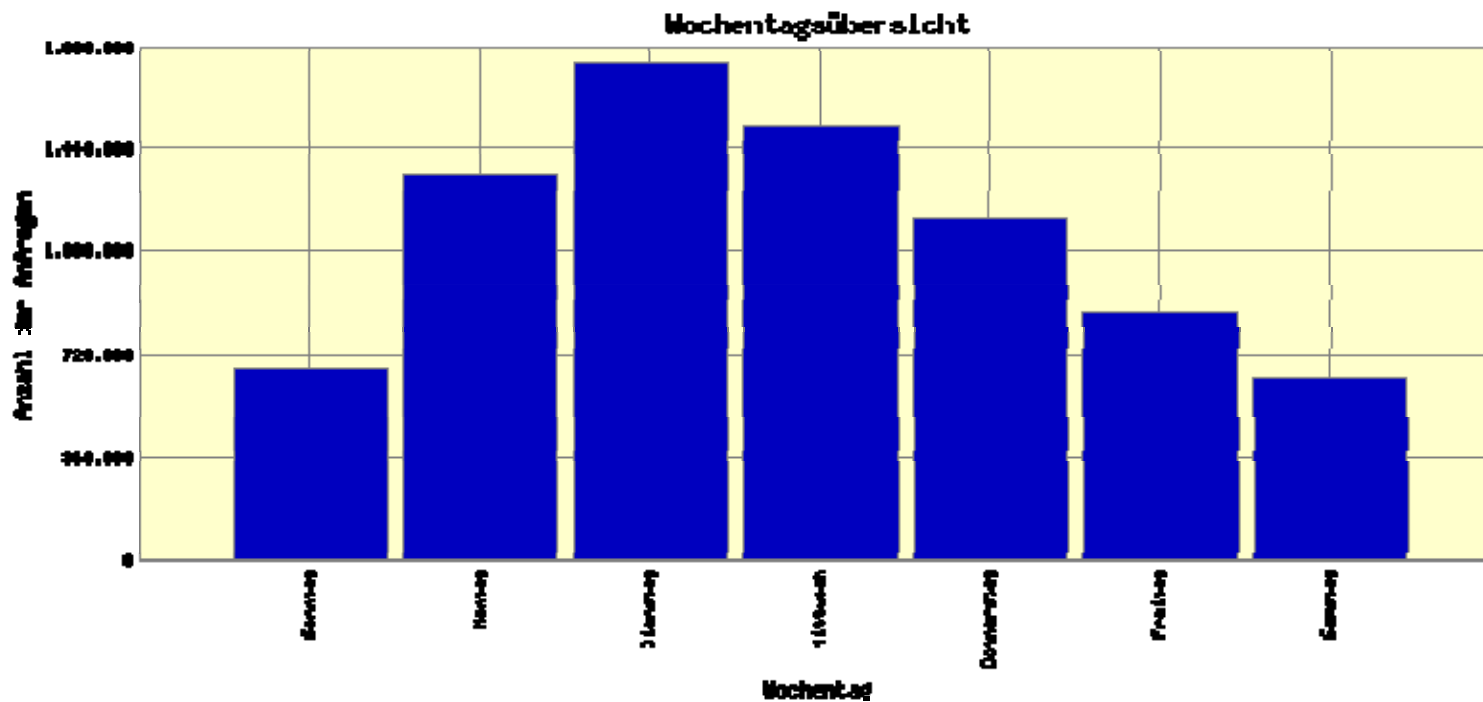
- Umwelt
- Bevölkerung
- Klima
- Wasser



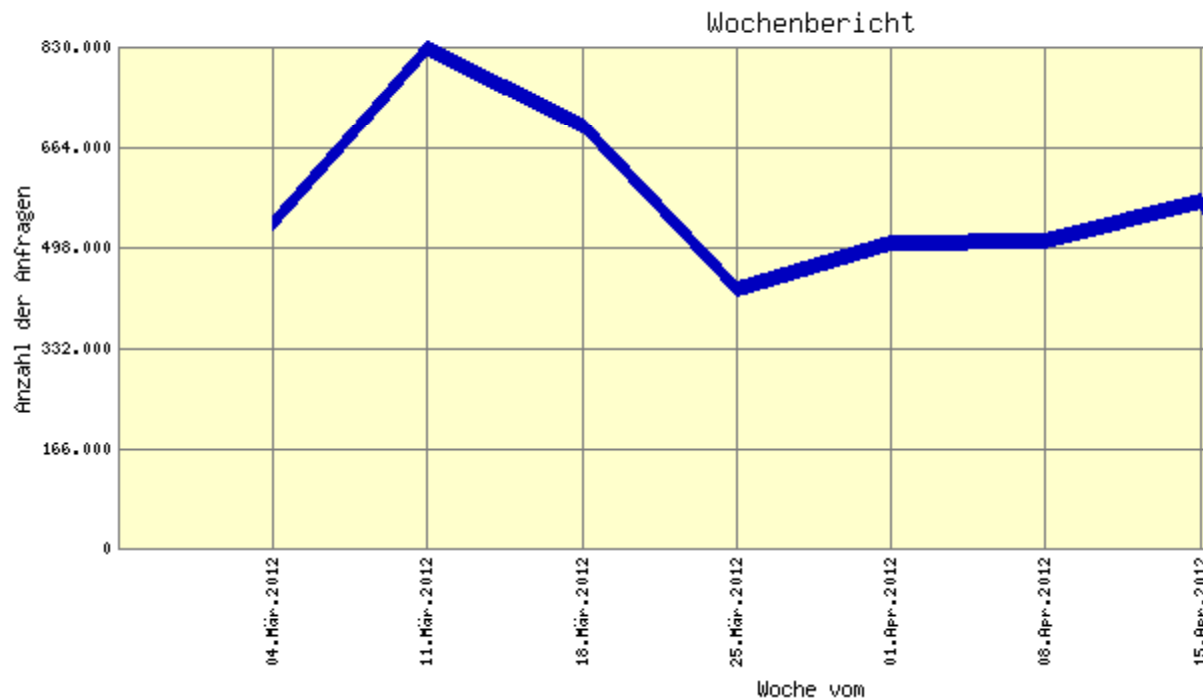




- Maximum number of requests per day: 640.215 (page requests 90.144)
- Mean number of requests per day: 174.598 (page requests 63.638)
- Absolute number of requests for Geo-Clients (search, viewer)



- Main user group: the working world
- Cumulative number of requests for Geo-Clients (search, viewer)



- Peak after go live, usage stabilising and increasing
- Absolute number of requests for CMS-component

So, were requirements met?

support@geoportal.de

- User-friendly, Web-like, straightforward



- Generally positive feedback (~90 mails altogether)
- Helpful comments on additionally needed filters ('all free WMS')

- High performance, no sandglass experience



- For core services yes (base maps, place search, geodata search)
- Problem remains for decentral services, caching a solution

- Search within GDK-DE data pool, i.e. GDI-DE



- Reveals lack of data quality in metadata, problem to filter on free text fields from CS-W AP ISO 1.0 ('all free WMS')
- Room for improvement; focal point for further development

Geoportal.DE

– insight into the spatial data infrastructure of Germany (GDI-DE)

Questions?

Sebastian Schmitz
Federal Agency for Cartography and Geodesy
Coordination GDI-DE

support@geoportal.de