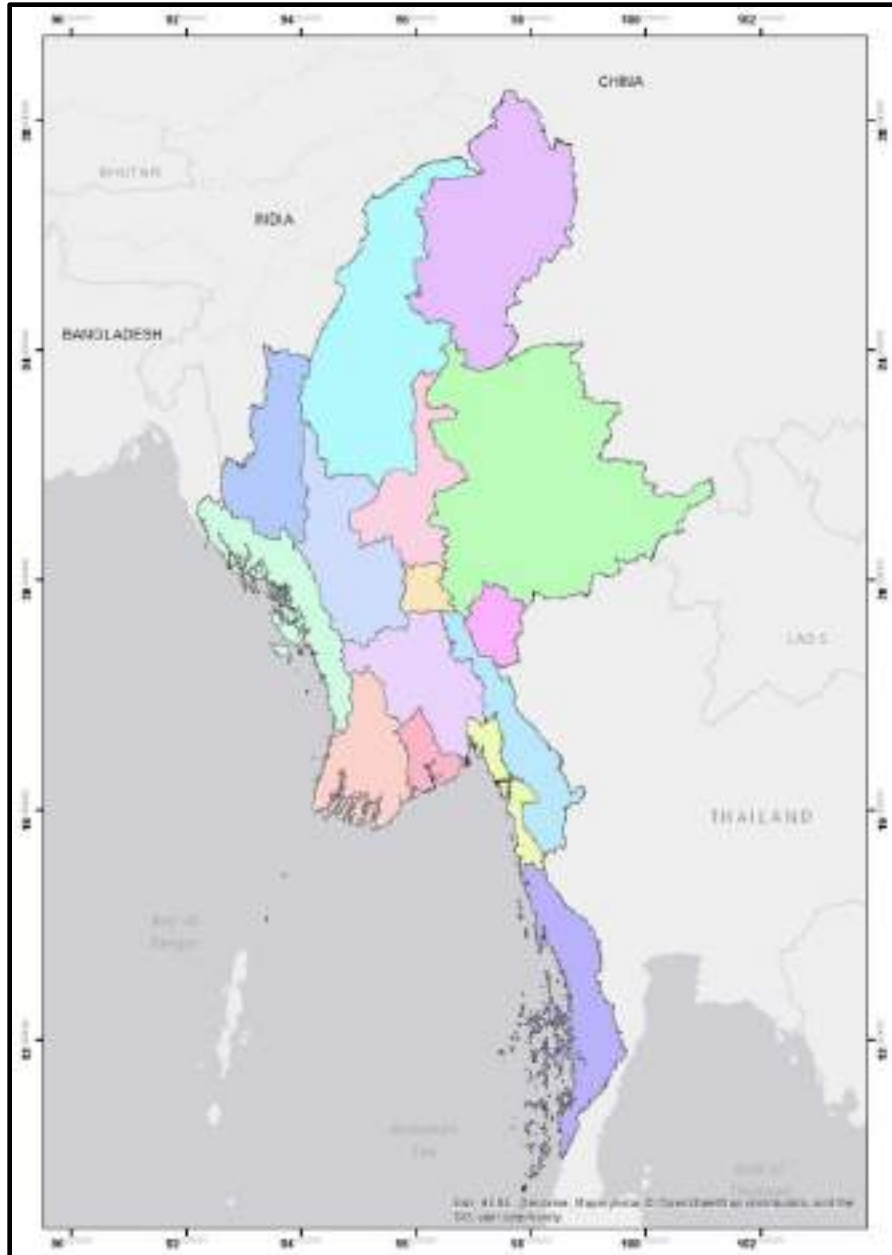




Enhancing Space-based Disaster Management System in Myanmar

Presented by
THIRI MAUNG

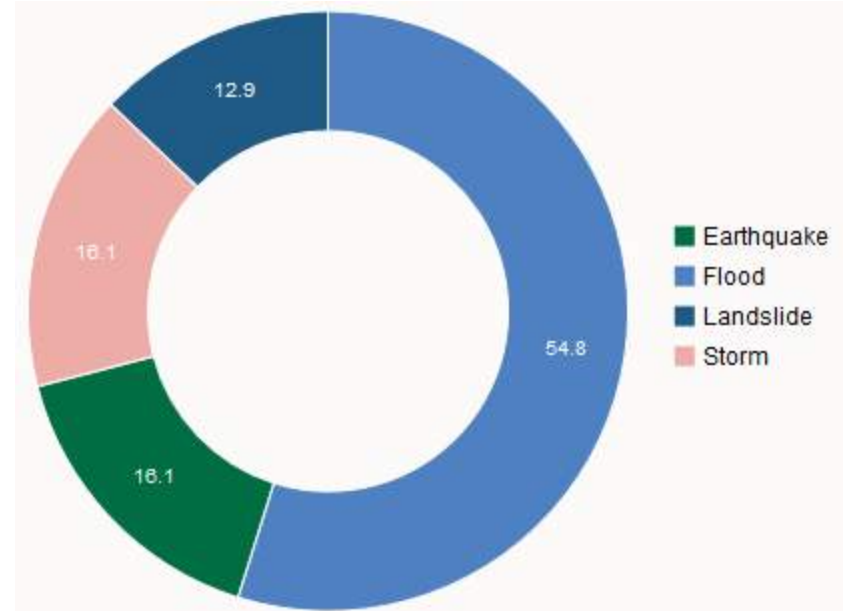
Country Profile



- **Location** : North-East Part of the Indo-China peninsular
- **Total Area** : 261,228 sq miles
- **Neighbouring** : Bangladesh, China, India, Lao PDR, Thailand
- **Population** : 51.49 millions (as of the census data 2014)
- **Races** : Over 100 national races
- **Seasons** : Summer (Mar-May), Rainy (June-Oct), Winter (Nov-Feb)

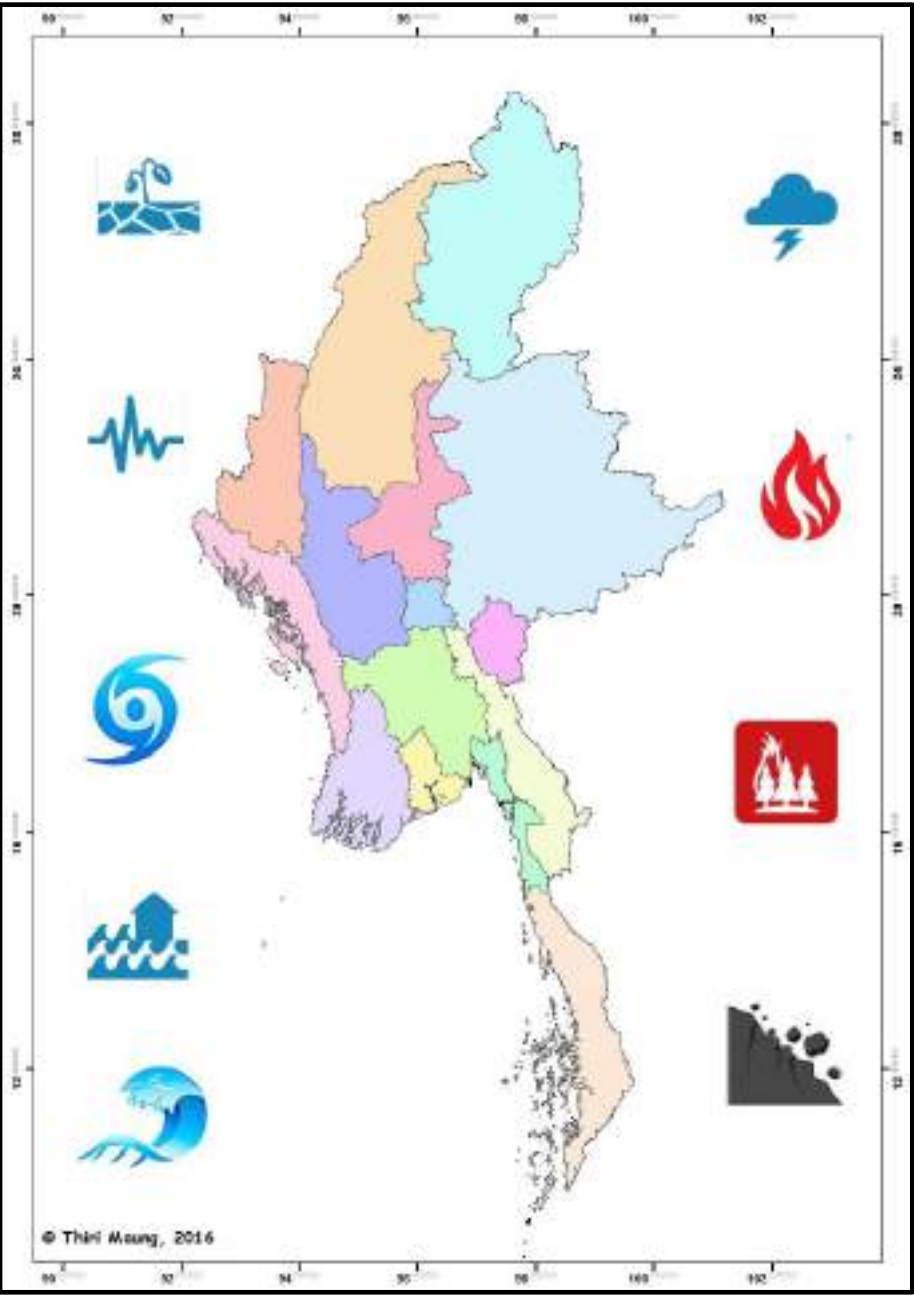
Myanmar and its Disasters

- Disaster Frequency between (1990 – 2014)



Ref:

<http://www.preventionweb.net/countries/mmr/data/>



National Disaster Management Committee's Organogram

National Disaster Management Committee (NDMC)

Advisory Group

State/ Region Disaster
Management
Authority

District Disaster
Management
Authority

Township Disaster
Management
Authority

Ward/ Village Tract
Disaster
Management
Authority

Disaster Management
Work Committee

Financing and Financial
Management Work Committee

Security Work Committee

News and Information
Work Committee

Health Care Work
Committee

Livelihood Restoration Work
Committee

International Relation
Work Committee

Search and Rescue Work
Committee

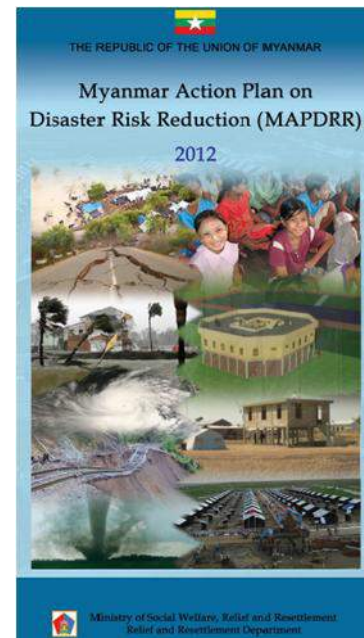
Logistic Work Committee

Rehabilitation and
Reconstruction Work
Committee

Initial Need Assessment, Damage
and Loss Verification and Need
Identification Work Committee

Environmental Conservation
Work Committee

- Disaster Management Law and Regulations (2013)
- Myanmar Action Plan on Disaster Risk Reduction (2012-2015)



UN-SPIDER's Technical Advisory Mission to Myanmar



- to know about the utilization of space based information and GIS in DRR and Emergency Response
- Through the TAM, the following recommendations were emerged:

- Policy and Coordination
- Data and access
- Information sharing
- Capacity Building and Institutional Strengthening
- Communication Infrastructure



Follow-up of TAM in Myanmar (2012)



- Capacity Building Programme for Geo-informatics Disaster Management in Myanmar, November 2012
- Support to join the Workshops and training programmes organized by UN-SPIDER workshops

Follow-up of TAM in Myanmar (Contd:) (2016)

- Conduct high level advocacy meeting back-to-back with the Training on the “Use of Earth observation data and GIS techniques for landslide hazard mapping”



Before TAM

National Disaster Management Committee



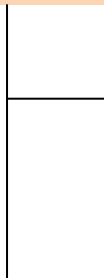
Ministry of Social Welfare, Relief and Resettlement



Weather Outlook Monitoring Unit

Monitoring the Web-based Weather Forecasting

Reporting the Situation



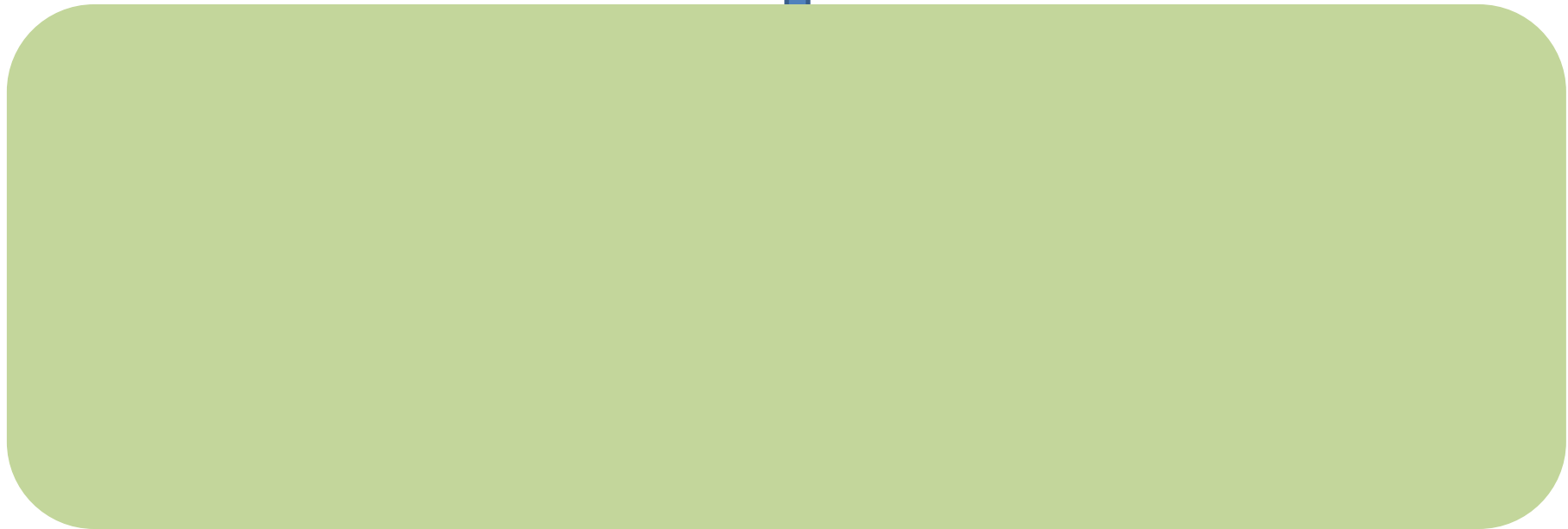
After TAM

National Disaster Management Committee

(During Disaster Emergency)

Disaster Management Center

Ministry of Social Welfare, Relief and Resettlement



After TAM

National Disaster Management Committee

(During Disaster Emergency)

Disaster Management Center

Ministry of Social Welfare, Relief and Resettlement

Emergency Operation Center (EOC)

**Risk Assessment
and Emergency
Response Section**

**Coordination
Section**

**Information
Management
Section**

After TAM

National Disaster Management Committee

(During Disaster Emergency)

Disaster Management Center

Ministry of Social Welfare, Relief and Resettlement

Emergency Operation Center (EOC)

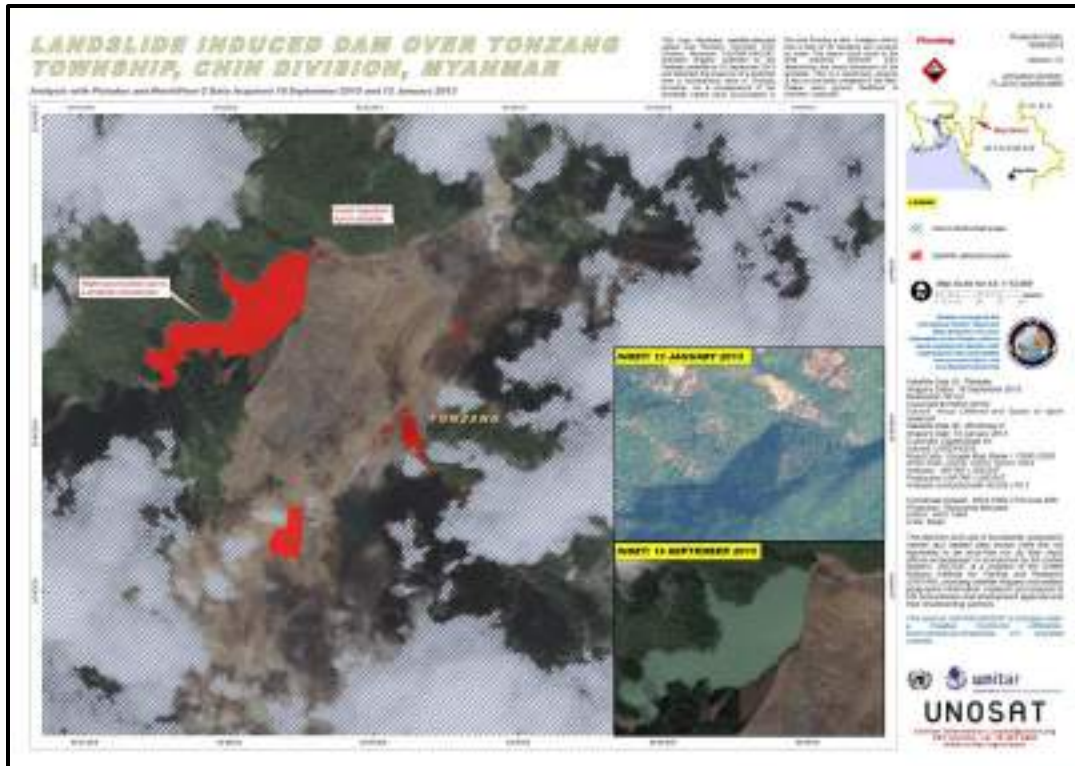
**Remote Sensing
and GIS Section**

**Risk Assessment
and Emergency
Response Section**

**Coordination
Section**

**Information
Management
Section**

2015 Nation-wide Flood

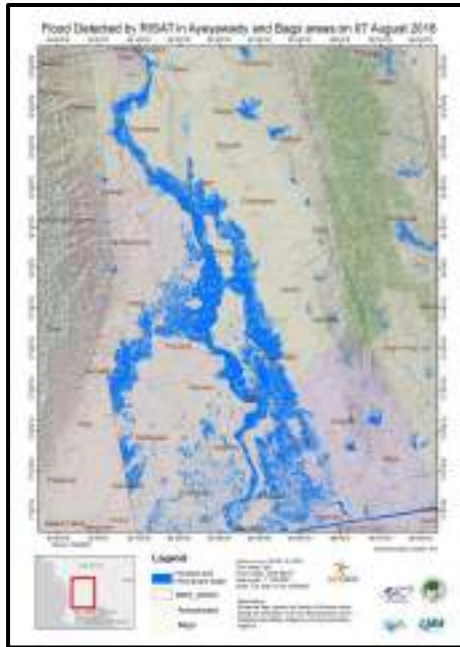


- Activate Sentinel Asia for Emergency Observation Request

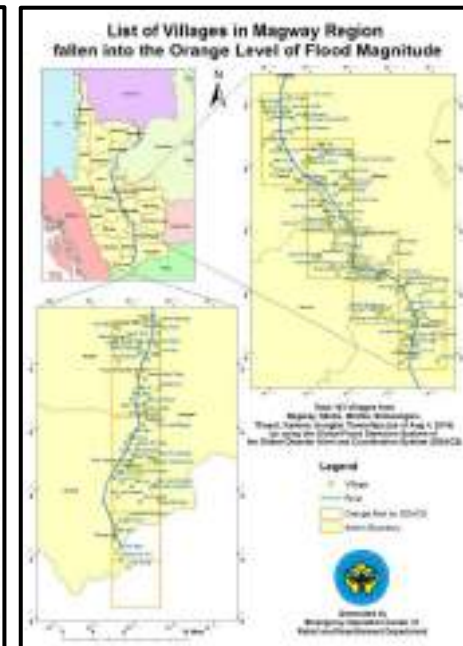
- Can detect not only the flood extent but also the landslide induced dam
- Can provide the effective information to the decision makers to plan the recovery



2016 Annual Flood



- Request EOR to SA
- Generate the Maps by itself and provide to the emergency response team for their quick humanitarian actions



Future Plans

- Revising previous MAPDRR and developing new action plans on DRR will be developed in line with regional and global guidelines (AADMER and SFDRR)
- Promoting the action plans by the inclusion of space-based and geospatial technology

Mission

To transform the ordinary disaster management system into

“Research-based Disaster Management System integrating with Space-based and Geospatial Information Technology”

Thank you