



UNITED NATIONS
Office for Outer Space Affairs



Federal Ministry
of Economics
and Technology



United Nations/Germany Expert Meeting

Use of Space-Based Information in Early Warning Systems

25-26 June 2013 Bonn, Germany

Useful information for participants

With the support of



Federal Office
of Civil Protection and
Disaster Assistance



Welcome to Bonn

A hub of international synergies



members of parliament and is widely known by its nickname “Tall Eugene – Langer Eugen” (named after the first name of a former President of Parliament). Sixteen of the seventeen UN units residing in Bonn are assembled under its roof. Another, older parliamentary office building across the street from “Langer Eugen” is currently being rebuilt as an ecological pilot project to accommodate the UN Climate Secretariat (UNFCCC).

With the experience, structures and competences of 50 years of governmental responsibility, the city of Bonn was destined for its new role as an international scientific and communication centre after Berlin became Germany’s capital again in 1990. Today, Bonn fulfills that role with numerous UN organisations, federal ministries and subordinate authorities, development organisations and non-governmental organisations with international orientation that constitute a strong international network in Bonn.

Over the past decade, Bonn has managed to shape a new profile as the German City of the United Nations and a centre of international dialogue on key issues of the future. The Bonn UN Campus is a visible symbol of this development. Since July 1996, Bonn is entitled to call itself a UN City. Ten years later, in July 2006, Federal Chancellor Angela Merkel handed over the new branch office of the United Nations to UN Secretary General Kofi Annan. The Federal Government has invested EUR 55 million into refurbishing the high-rise building which used to accommodate offices of

“The UN in Bonn - for sustainable development worldwide”: this is the common denominator of the UN units in Bonn. The UN Campus provides ideal working conditions and an environment rich in synergies. A special advantage is the close distance to the International Congress Centre and to many other important partners. This is an excellent environment for co-operative action and for ad hoc networking. UN organisations, Federal Ministries and Federal Agencies, about 150 Non-Governmental Organisations, Research Institutions and the resident economic Global Players determine the character of Bonn as an international location. Increasingly, the city is turning into a hub of a network whose actors focus on the issues of sustainable and humane development.

Further information is available under:
http://www.bonn.de/wirtschaft_wissenschaft_internationales/unostadt/?lang=en

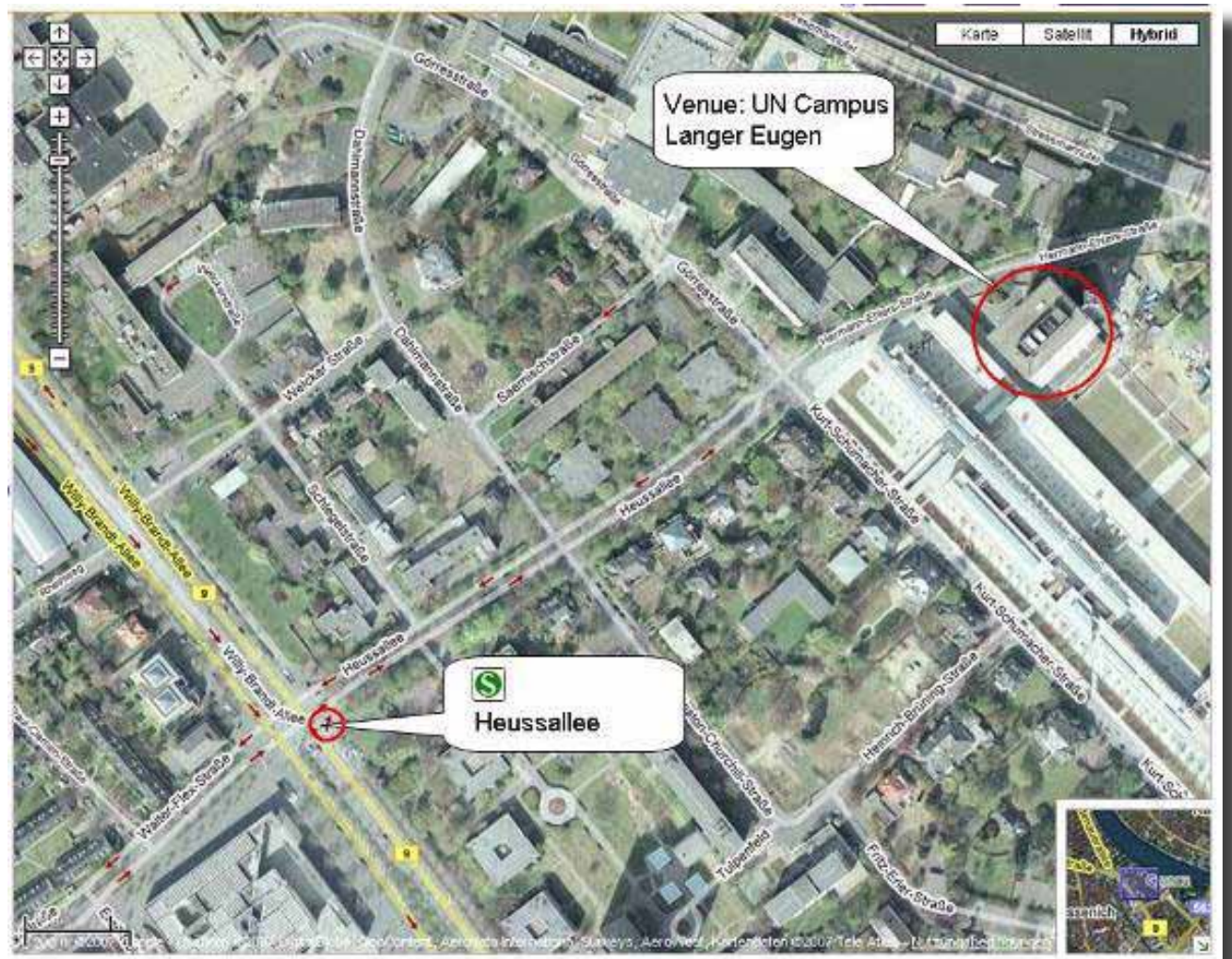
Venue

Where we are and how you find us

The workshop is to be held at the UN Campus – Langer Eugen. It offers excellent conferencing facilities, as well as a canteen with international cuisine. Additional rooms will be accessible for parallel sessions and discussion groups.

Postal Address:

UN-SPIDER
UN Campus
Hermann-Ehlers-Str. 10
53113 Bonn



By air:

from Cologne/Bonn airport (Flughafen Köln/Bonn):

- Airport-shuttle-bus No 670 towards Bonn Hauptbahnhof (Central Station)
- Underground (U-Bahn) line 16, 63 or 66 direction Bad Godesberg/Königswinter
- “Heussallee/Museumsmeile” stop, exit station direction “Deutsche Welle”
- When you reach the street go straight ahead until you reach Hermann-Ehlers-Str. and the UN Campus

The airport is well connected to the city centre by Airport-shuttle-bus No 670 leaving from Terminal 2 every twenty minutes (a single ticket is 10.10 EUR and is valid for the tram as well if you immediately continue your trip). It is also possible to rent a car or take a taxi, of course. The distance between airport and Central Station is around 30 km. Please check the following webpage on more information about Bonn/Cologne Airport:

<http://www.koeln-bonn-airport.de/index.php>

By railway/underground:

from Bonn Hauptbahnhof/Central Station:

- Underground (U-Bahn) line 16, 63 or 66 towards Bad Godesberg/Königswinter (a single ticket - category 1b - is 2.70 EUR)
- “Heussallee/Museumsmeile” stop, exit station direction “Deutsche Welle”
- When you reach the street go straight ahead into Heussallee until you reach Hermann-Ehlers-Str. and the UN Campus

By car:

If you come by car, use a route planner to find your way to the UN premises and to your hotel, for example [maps.google.com](https://www.google.com/maps).

Coming from the North (Frankfurt/Hannover/Ruhrgebiet):

- A3 motorway to Bonn/Siegburg intersection
- A560 motorway towards Bonn until St. Augustin junction
- A59 motorway towards Bonn-Bad Godesberg until Bonn-Ost (42) intersection
- A562 motorway, keep right until exit (Anschlussstelle) Bonn-Rheinaue
- Turn right onto Franz-Josef-Strauss-Allee towards Bonn-Rheinaue
- First exit on the right into Charles-de-Gaulle-Str
- Follow the road and pass the Post Office area
- When you reach the Rhine, the first exit on the left is the Hermann-Ehlers-Str
- Follow Hermann-Ehlers-Str until you reach the UN Campus



Coming from the South-West of the Rhine:

- A61 motorway until Meckenheim intersection
- A 565 motorway towards Bonn
- Poppelsdorf exit, towards Bad Godesberg (B9)
- After “Reuterbruecke”-Bridge keep right and follow the road to the right into Adenauerallee
- Second exit on the left towards the Heussallee
- At the second traffic lights turn right into Kurt-Schumacher-Str.
- First exit on the left into Franz-Josef-Strauss-Str.
- Then use the next possibility to exit on the left and turn into Charles-de-Gaulle Str
- Follow the road and pass the Post Office area
- When you reach the Rhine, the first exit on the left is the Hermann-Ehlers-Str.
- Follow Hermann-Ehlers-Str until you reach the UN Campus

Note for Visitors: There is hardly any possibility to park your car directly at the UN Campus. However, if required, you can leave your car on one of the parking areas you pass along the Charles-de-Gaulle-Straße. Parking is not permitted opposite the UN entrance in Hermann-Ehlers-Straße.

Hotel Information

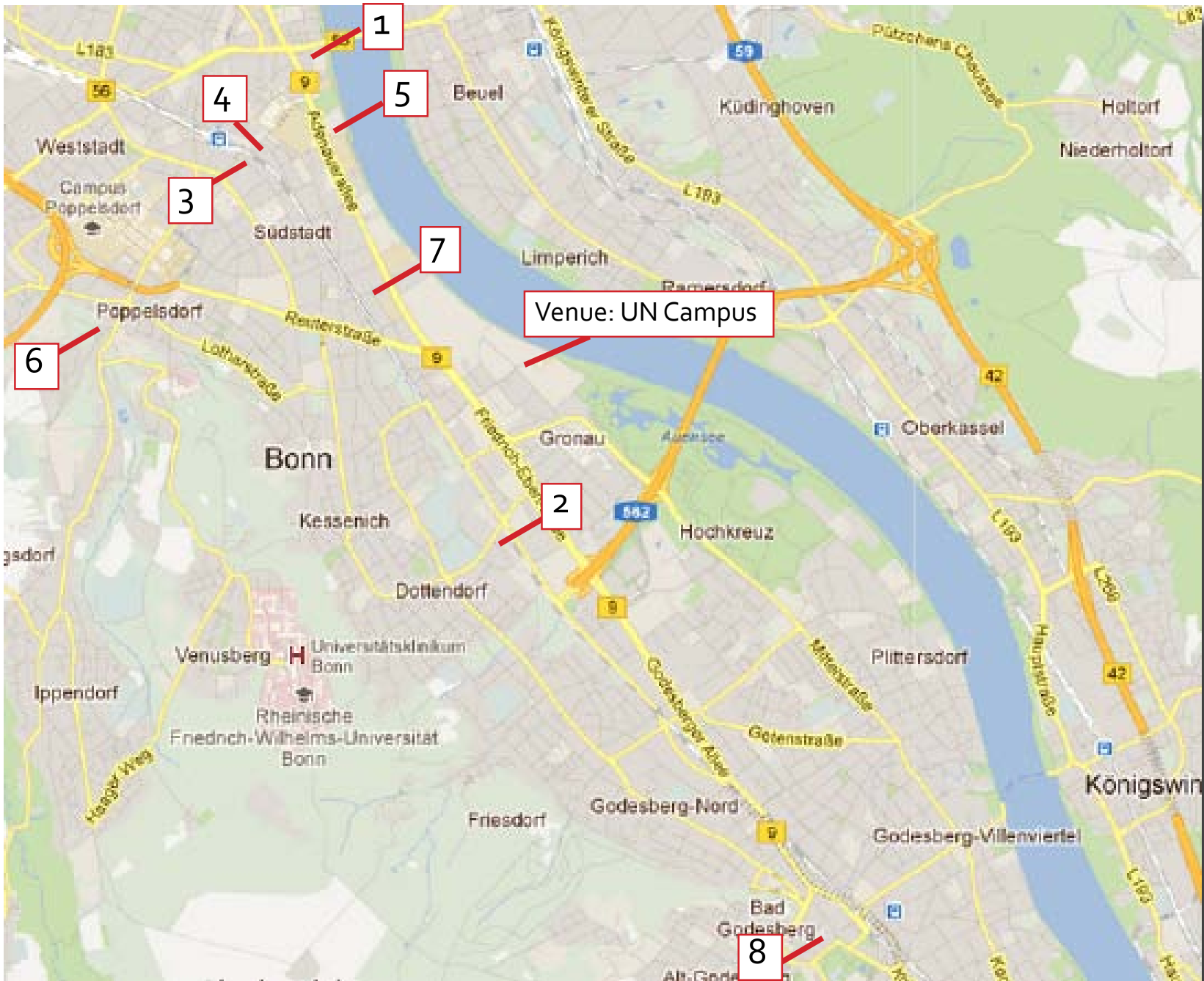
Where you can stay

For certain hotels in Bonn special UN discounts/prices are offered. We strongly recommend booking your room as soon as possible. Please contact the hotel directly to make your reservation informing them that you are a participant of a United Nations Expert Meeting in order to receive the rates below and mention the booking code where indicated. Breakfast and taxes are included in the prices unless stated differently.
More hotels: www.bonnhotels.de



Hotel	Rates	Booking Contact
1) Hotel Rheinland Berliner Freiheit 11 53111 Bonn	68 € EUR / single room 84 € EUR/ double room	Michael Wolff info@rheinland-hotel.de www.rheinland-hotel.de
2) Boarding House BONNOX In der Raste 5-7 53129 Bonn	79 EUR / single room 85 € EUR / double room Breakfast/night: 9 € Booking code: UNO-2013	Michael Wolff reception@bonnox.de Tel: +49/228/92667808 Fax: +49/228/92667809 www.bonnox.de
3) Guennewig Hotel Bristol Prinz-Albert-Str. 2 53113 Bonn	106 € EUR / single room 136 € EUR / double room	Mauren Off Off@guennewig.de Tel: +49/228/26980 www.guennewig.de/bnbristo
4) Guennewig Hotel Residence Kaiserplatz 11 53113 Bonn	106 € EUR / single room 136 € EUR / double room	Mauren Off Off@guennewig.de Tel: +49/228/26970 www.guennewig.de/bnreside
5) Hotel Koenigshof Adenauerallee 9 53111 Bonn	125 € EUR / Single room 140 € EUR / Superior Single room 170 EUR / Superior Double room Booking Code "UN"	Karen Lichius info@hotel-koenigshof-bonn.de Tel: +49/228/2601510 www.hotel-koenigshof-bonn.de/de

Hotel	Rates	Contact
6) Hotel MY Poppelsdorf (Ameron) Wallfahrtsweg 4 53115 Bonn	75 EUR / Standard single 85 € EUR / Standard double for one 105 € EUR / Superior double for one 95 € EUR / Standard double for two 115 € EUR / Superior double for two Booking Code "UN"	Karen Lichius info@mypoppelsdorf.com Tel: +49/228/26 91 0 Fax: +49/228/26 10 70 www.mypoppelsdorf.com
7) Derag Hotel and living / Hotel Kanzler Adenauerallee 148 53115 Bonn	89 € EUR / Single Apartment (min 4 nights) 99 € EUR / Double Apartment (min 4 nights) 115 € EUR / Single Room 131.50 € EUR / Double Room Booking Code: UN2013	Michael Gottlieb res.ka@derag.de Tel: +49/228/68440 Fax: +49/228/6844180 www.deraghotels.de/hotels-bonn/hotel-kanzler-bonn.html
8) Insel Hotel Theaterplatz 5-7 53177 Bonn	85 € EUR / Single Room 110 € EUR / Double Room 105 EUR / Deluxe Single Room 125 € EUR/Deluxe Double Room	Alexej Samoilow reservierung@inselhotel.com Tel: +49/228/35000 Fax: +49/228/3500333 www.inselhotel.com



Public transportation

How you reach us from your hotel

It is easy to get around in Bonn as its public transport is well developed. You can choose between suburban trains (S-Bahn), subway (U-Bahn), trams and buses. You can find out about the quickest way to get from A to B on one of two electronic itinerary planners by typing in an address or a stop:

en.swb-busundbahn.de/

www.vrsinfo.de/englisch

www.bahn.de

There are several ticket options for using public transport within Bonn.

Zone K: For getting from U-Bahn stop “Universität/Markt” to the conference location (Stop “Heussallee”) or any other journey with four stops or less, you will need a ticket for Zone K (short distance tickets, valid for max. 4 stops). A single ticket for Zone K is 1.90 EUR, a 4-trip ticket is 7 EUR.

Zone 1b: From “Bonn Hauptbahnhof” (Central Station) to the venue and any other stop within Bonn more than 4 stops away from “Heussallee” you will need a ticket for Zone 1b. A single ticket for Zone 1b is 2.70 EUR. You can also buy day-tickets (7.80 EUR for category 1b) or purchase 4-trip tickets (“4er Ticket”, 9.70 EUR for category 1b).



Visa Application

Advise and information on getting your visa

Visitors from some countries are required to apply for a visa before coming to Bonn. On the following webpage you can find out whether you will need a visa to attend the workshop.

http://www.auswaertiges-amt.de/EN/EinreiseUndAufenthalt/StaatenlisteVisumpflicht_node.html

The next webpage gives general advices for visa applications. Please make sure that you apply well in time. You can download the application forms in several languages on this webpage as well.

http://www.auswaertiges-amt.de/EN/EinreiseUndAufenthalt/Visabestimmungen_node.html

You will need to send your application to the mission/consulate responsible for the country you are from or where you have taken up permanent residency. Check the following webpage for location and address for the missions/consulates that are of relevance for you.

http://www.auswaertiges-amt.de/EN/Laenderinformationen/DtAuslandsvertretungenA-Z-Laenderauswahlseite_node.html

If you need to submit any official documents regarding the event or need any other assistance for your Visa application, please contact us. (See page 12 for contact details.)



On the first day of the event

Registration details



Registration will start Tuesday, 25th June at 8:30 a.m. and will continue until 9 a.m. Please arrive in good time and bring with you your invitation letter, a valid identity card, passport or other identification document with a photograph. Security is commonly strict and only participants that arrive with their letter and their ID will be allowed to

enter the UN Campus. Large bags will not be allowed into the building, but can be stored at the entrance for the duration of your visit.

At registration you will receive a welcome package containing the programme and additional information on the conference.

Your health

Where to get medical care

Please make sure that your health/life/travel insurance covers any medical treatments that might become necessary. **UNOOSA and its partners will NOT assume any responsibility for life and major health insurance, nor for expenses related to medical treatment or accidental events.** There are several general hospitals in Bonn. In case you need special medical assistance while you are attending the workshop, contact any of them to identify the one that is specialised in your medical condition.

Universitätsklinikum Bonn

Sigmund-Freud-Straße 25 53105 Bonn Telefon 0228 / 287-0

<http://www.ukb.uni-bonn.de>

Gemeinschaftskrankenhaus Bonn (Haus St. Elisabeth):

Prinz-Albert Str. 40 53113 Bonn Telefon 0228 / 508-0 Fax 0228 / 508-1508

<http://www.gk-bonn.de>

St. Marien-Hospital

Robert-Koch-Straße 1 53115 Bonn Telefon 0228 / 505-0 Fax 0228 / 505-2019

<http://www.marien-hospital-bonn.de>

Currency

How to pay and where to withdraw cash

In Germany, the currency - as in most European countries - is the Euro. Current exchange rate is 1 EUR - 1.30 US Dollar (as of 13/05/2013).

Bonn's banks and savings banks (Sparkassen) offer services to meet all of your banking needs, including foreign currency transactions, securities business and customer investment advice. All banks are under state supervision. Banking hours are generally 8 a.m. to 4 p.m. on workdays with a 1 ½ hour break for lunch. Most banks remain open until 6 p.m. on Thursdays and close at 3 p.m. on Fridays. Automatic teller machines provide cash dispensing services to bank card holders 24 hours a day.

In most shops you will be able to pay with credit card and there are numerous cash machines throughout the town – including inside the UN building - where you can withdraw cash.

Enjoying Bonn

Tourist and leisure activities



In case you have some spare time on your hands, you might want to go for a little sightseeing tour in Bonn. The city offers various interesting sights and events for tourists.

You can go on guided tours by bus, by bike, on foot or even by limousine. The following webpage gives detailed information what types of sightseeing tours are available: <http://www.bonn-region.de/english.html>

Bonn offers several arts museums, ranging from medieval to contemporary art and many galleries. If you are an arts lover, you should check the following webpage for more information on the Bonn arts scene: <http://www.bonn-region.de/english/culture-art.html>

When it comes to sports Bonn offers something for all tastes and ages, from a relaxing walk at the foot of the Siebengebirge (a famous range of hills to the East of the river) to a marathon run.
http://www.bonn.de/tourismus_kultur_sport_freizeit/sport_in_bonn/index.html?lang=en

For events like concerts, exhibitions, musical etc. check the following webpage:
http://www.bonn.de/tourismus_kultur_sport_freizeit/bonn_ist_kultur/index.html?lang=en



Shopping in Bonn: Practically the entire city centre is a pedestrian shopping centre. Between the railway station, the City Hall (Stadthaus), the Old Town Hall and Sterntor gate you can stroll from shop to shop, whether in large department stores, in clothing shops or in speciality shops of all kinds (fashion, high-tech, electronics, jewellery, sports equipment, delicatessen etc.). In the pedestrian zone and the shopping malls (Kaiserpassage, Cassius-Passage, Stern-Passage and Friedensplatz-Passage) you will find a shopping paradise, dotted with quaint peaceful squares with many cafés and restaurants. You will also find nice and varied shopping centres and pedestrian precincts in the other districts of Bonn (Bad Godesberg, Beuel, Hardtberg).

Opening hours differ, but are roughly from 9 a.m. to 8 p.m. Outside the city centre, smaller shops may close around noon or 2 p.m. on Saturdays.

Office of Tourist Information:

Windeckstraße 1 / near Münsterplatz
53111 Bonn

Tel.: +49 2 28 / 77 50-00 or 19433 Fax: +49 2 28 / 77 50-77

bonninformation@bonn.de

http://www.bonn.de/tourismus_kultur_sport_freizeit/tourist_information_aktuell/index.html?lang=en

Questions?

Get in touch with us!

Antje HECHELTJEN (Ms)
UNOOSA/UN-SPIDER,
United Nations Office in Bonn
Tel: +49-815 0677
Fax: +49-8150699
E-mail: antje.hecheltjen@unoosa.org

Anne KNAUER (Ms)
UNOOSA/UN-SPIDER,
United Nations Office in Bonn
Tel: +49-815 0682
Fax: +49-8150699
E-mail: anne.knauer@unoosa.org

