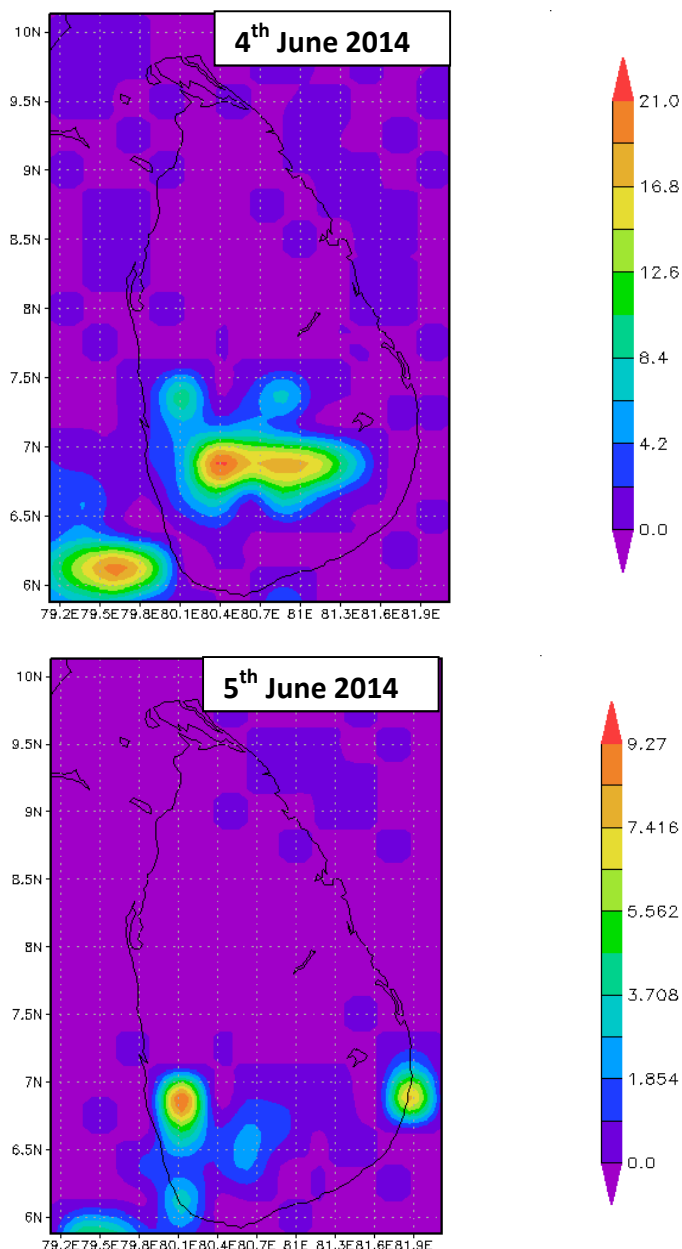


2nd Situation Report – Flooding in Sri Lanka caused by higher-than-normal monsoon rainfall (as of 5th June 2014)



NASA's Real-time TRMM Data for 4th and 5th June 2014

Beginning of extreme rainfall from June 1, 2014 in Western Province has significantly reduced on 5th June 2014 as noticed in the image. Comparing both the days suggest a decrease in rainfall from 16mm/day to 8mm/day in WP. There is also a shift in rainfall behavior from WP to Central and Eastern Province as observed on bottom image with an average rainfall of less than 7mm/day. Decrease in rainfall intensity from the Western Province due to the monsoonal shift from Southwest to Northeast towards India.

Please note that the TRMM products are not validated against meteorological stations, there might be over or under estimation of rainfall. The information and views set out in this rainfall product are those of the author and do not necessarily reflect the official opinion of the International Water Management Institute.

Source: Giriraj Amarnath,
Researcher – IWMI