



How Mobile Technology helps Humanitarian Operations

World Disaster Report

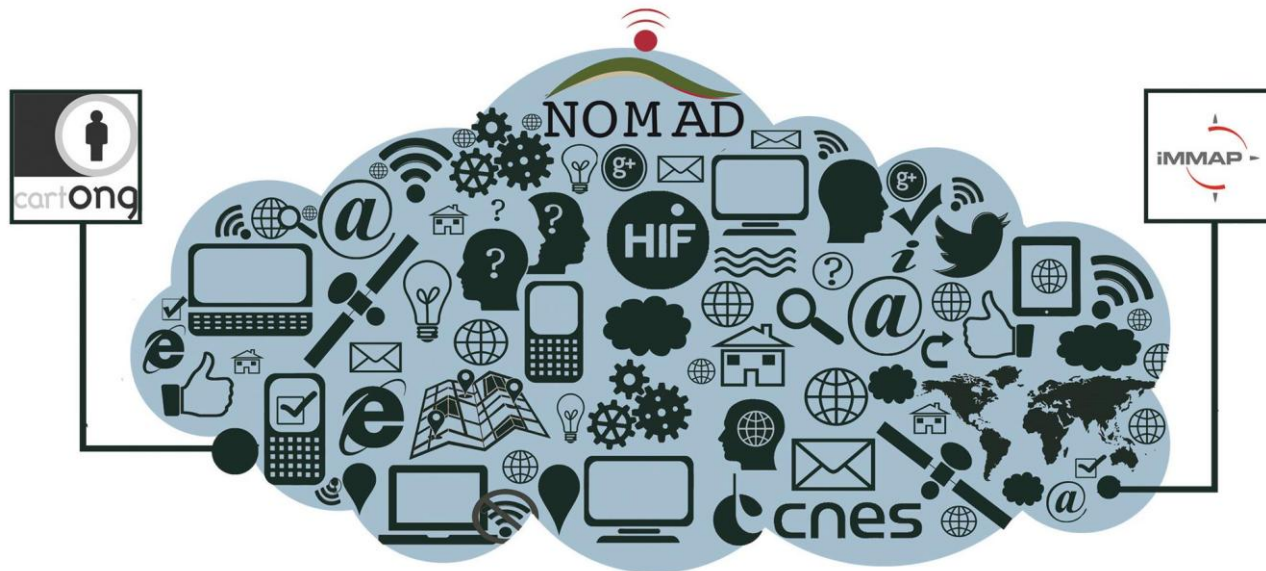
Vienna, October 30th, 2013

Christophe Bois, iMMAP



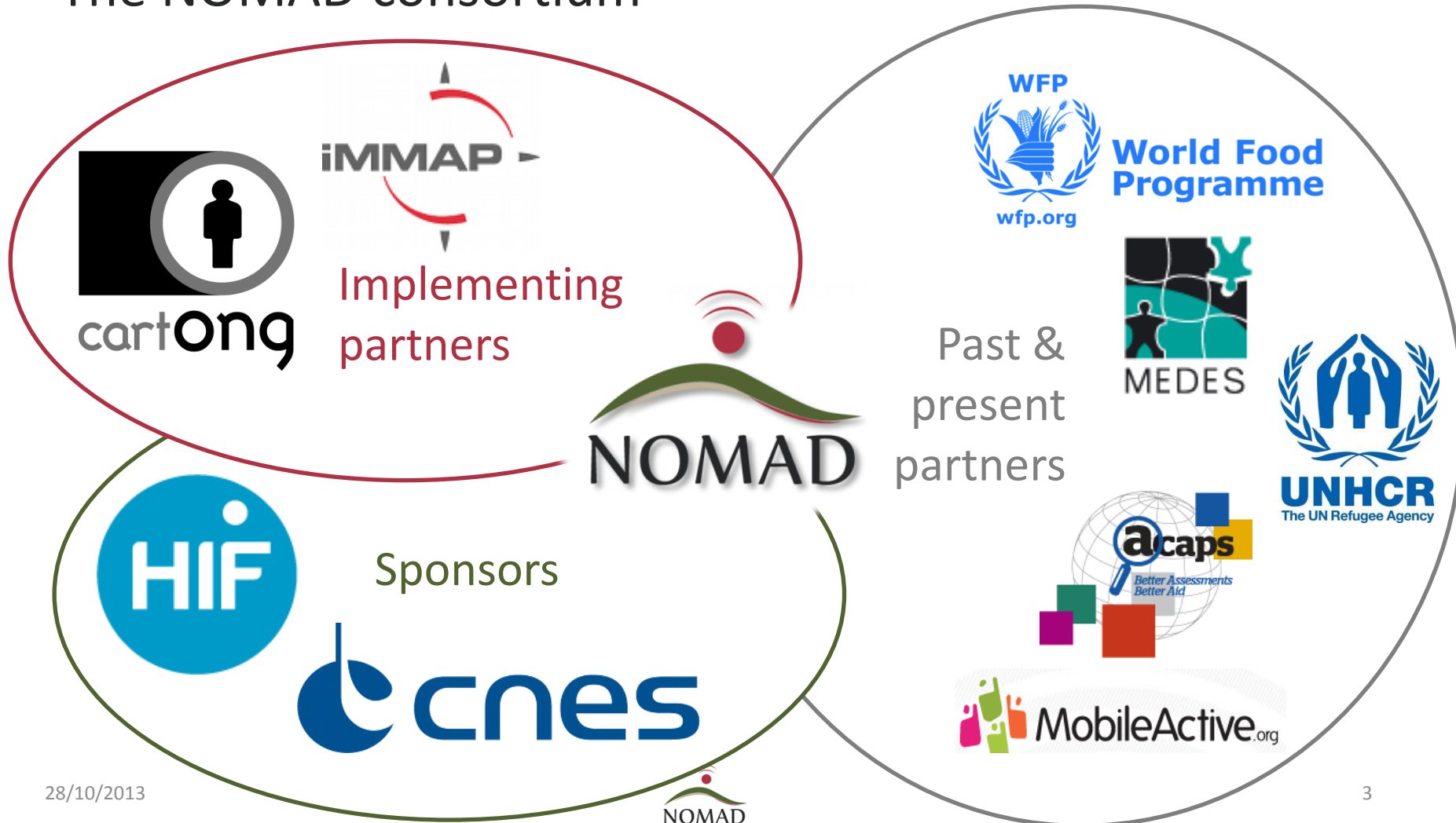


The NOMAD project





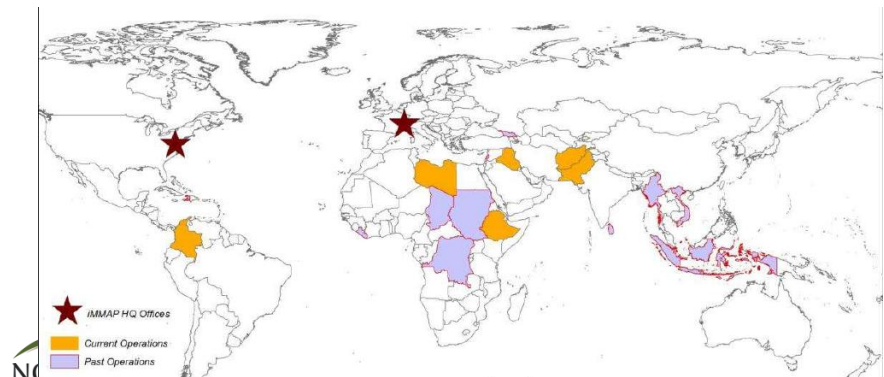
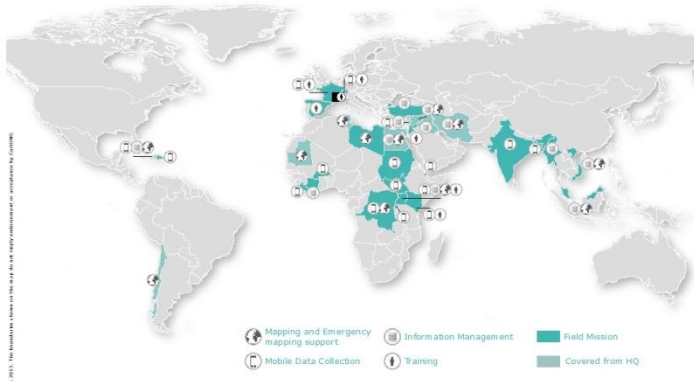
The NOMAD consortium





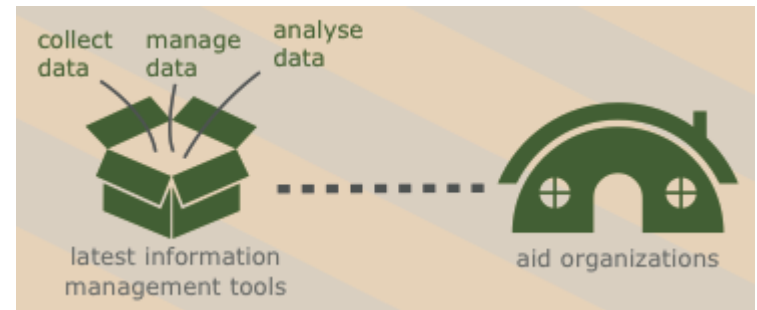
- The implementing partners

- ✓ CartONG, French NGO (2006) based in Chambéry
- ✓ iMMAP, US NGO (1998), European branch (2008)
- ✓ Both specialized GIS/information management
- ✓ Capacity building, operational support, research
- ✓ Large field experiences with international and local partners worldwide





- Goal: inform humanitarian organizations on mobile data collection solutions and help them in the implementation process
- NOMAD services:
 - ✓ Research & testing
 - ✓ Pilot projects
 - ✓ Online selection assistant
 - ✓ Trainings, field or remote support
 - ✓ Community of good practices & workshops organization



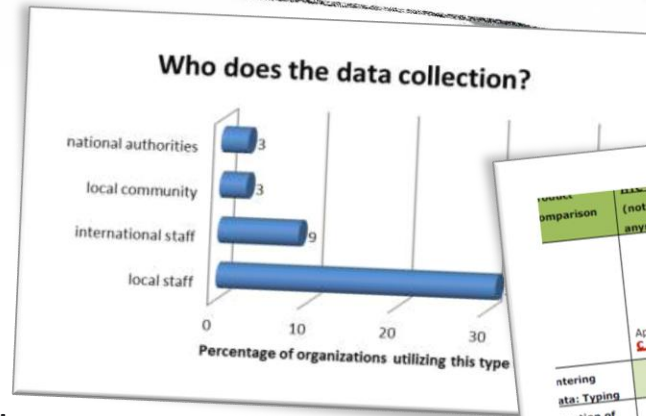


• Research

- ✓ Case studies
- ✓ Devices benchmarks

• Pilot projects

- ✓ Test several solutions: Imogene, OASIS, ABCs@t
- ✓ Field pilots: IOM Haiti Displacement tracking Matrix / WFP Ethiopia: Food Delivery Monitoring / UNHCR with CartONG: Nutrition/Rapid Registration/Village Profiles/Shelter Assessment (Kenya, DRC, Rwanda, Dominican Republic and Lebanon).



Device comparison	BlackBerry (not on market anymore)	Motorola Droid	Galaxy S	X10 Pro Mini
				
	Approx: € 500 +	Approx: € 450 +	Approx: € 440 +	Approx: € 230 +
entering data: Typing	++	+	o	++
reaction of touchpad	+	++	++	o
	-	++	+	+
	++	++	++	++
	+	-	o	o
	o	o	+	+
	+	+	+	+
	o	+	+	+





• NOMAD online selection tool

- ✓ Step-by-step questionnaire to identify your needs
- ✓ Finds solution(s) most fit for you
- ✓ Updated regularly

Online Selection Tool

Q1a. / 12

Select the operating system(s)

<input type="checkbox"/> Windows Mobile	<input type="checkbox"/> Android	<input type="checkbox"/> iOS
<input type="checkbox"/> Symbian	<input type="checkbox"/> Blackberry	<input type="checkbox"/> PalmOS
<input type="checkbox"/> PocketPC	<input type="checkbox"/> HTML5 Browsers	<input type="checkbox"/> Windows CE

Select the operating system(s) of your existing Mobile Devices (MD).

<< Previous Next >>


Mobile solutions (4)

CommCare
DevInfo
Open Data Kit
Pendragon

Result!

NOMAD recommends these mobile data solutions:

CommCare +
DevInfo +
Open Data Kit -



Open Data Kit (ODK) replaces paper forms with electronic forms on a smartphone or tablet. It's great for mobile workers (e.g., community health workers, census takers, forest monitors) who need to collect data quickly, accurately, off-line, and at scale. Besides collecting text and numbers, ODK can be used to take pictures, capture GPS location, scan barcodes, and even play videos. ODK tools are free and open-source and are used by tens of thousands who have collected millions of forms. In this online questionnaire functions of ODK Collect, ODK Briefcase, ODK Aggregate and Enketo (<http://enketo.org/>) have been integrated.

<http://opendatakit.org/>

Pendragon +

You are not yet logged in.

Subscribe to NOMAD to get further support and technology. When you subscribe you get:

Acque
COMMAN
CommCar
CSPPro
CyberTra
DevInfo
do Forms
Enketo Smart Paper
EpiCollect
FrontlineSMS
GeoChat



32 SOLUTIONS FEATURED



And
more?





- ✓ Free registration to get detailed PDF report
- ✓ Includes: explanations, comparison matrix, description of solutions

Technical Details Comparison Matrix

Hardware requirements and features supported

Feature	CommCare	DevInfo	Open Data Kit	Pendragon
Device OS supported	Android, Blackberry	Windows Mobile, Windows CE	Android, HTML5 Browsers	Android, iOS, HTML5 Browsers
Desktop OS required for tool	Windows, Mac, Linux	Windows	Windows, Mac, Linux, Any - Java required	MS Access for Windows
Server/Database Platform	Apache, Black Box, PostgreSQL, Debian, Ubuntu, Red Hat, Enterprise Linux	Apache, IIS, Tomcat	Tomcat, Amazon, Google App Engine, Black Box, Windows, MySQL, PostgreSQL, Any - Java required, Debian, Ubuntu, Fedora, Red Hat, CentOS, Enterprise Linux	Apache, MySQL, PHP
GPS	Yes	Yes	Yes	Yes
Picture	Yes	No	Yes	No
Video	Yes	No	Yes	No



NOMAD Mobile Solutions Summary Report

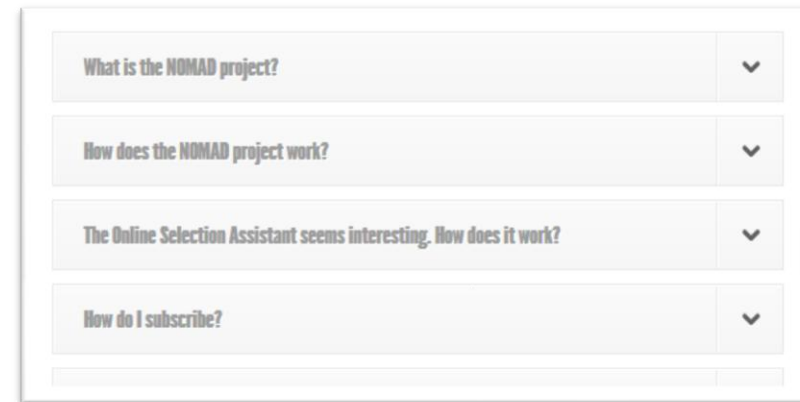
The NOMAD Mobile Decision Tool Survey Concept

Be advised that the information on the mobile data solutions (MDS) provided on these pages has been authored by each respective tool provider and NOMAD is not liable for any mistakes contained in the following content.

The NOMAD project's main aim is to improve information management for humanitarian

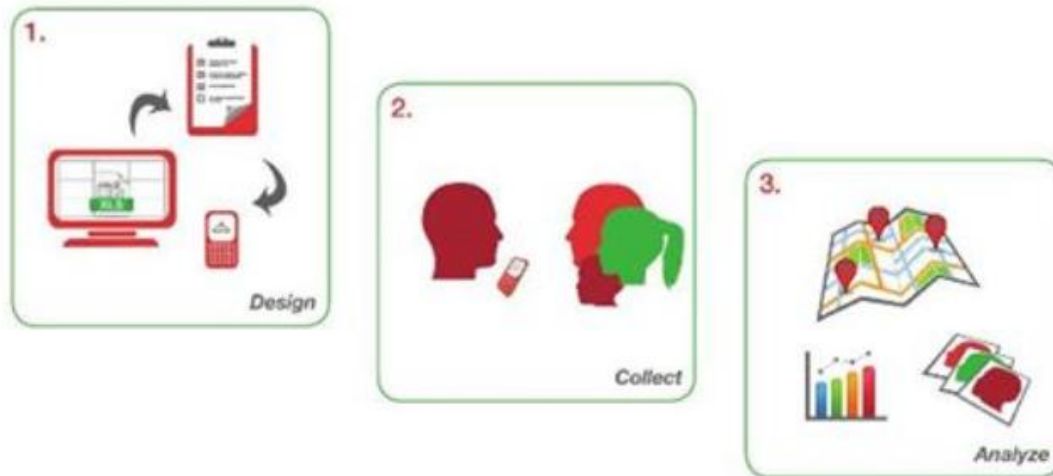


- **The NOMAD community:**
 - ✓ Website FAQ & forum
 - ✓ NOMAD staffs for questions
 - ✓ Workshops, 2013 Paris: 70+ participants, 10 providers at tool fair!





What to know before starting a mobile data collection process





MOBILE DATA COLLECTION WORKFLOW

The process

DATA HANDLING



The Mobile Data Collection Solution

Client/Desktop application is used to generate digital version of paper form

Client/Desktop application is used for cleaning and sometimes editing of the data on the server.

DATA COLLECTION



symbian

iOS

ANDROID

Windows Mobile

Multiple OS supported

ENUMERATORS USE MOBILE DEVICES WITH THE DIGITAL VERSION OF THE PAPER FORM.

The Survey Manager translates the paper form into an electronic form which is uploaded to the server or transferred manually on the Mobile device

THE SURVEY MANAGER TRANSLATES THE PAPER FORM INTO AN ELECTRONIC FORM WHICH IS UPLOADED TO THE SERVER OR TRANSFERRED MANUALLY ON THE MOBILE DEVICE.

SYNCHRONISATION PROCESS



Satellite Connection, GSM Network and WiFi

THE COLLECTED DATA IS SYNCHRONISED TO THE SERVER AND SOMETIMES BACK TO THE MOBILES, DEPENDING ON THE APPLICATION.

PAPER FORMS



When using a paper and ink approach, provision for manual data entry needs to be made.

DATA PROCESSING & DATA WAREHOUSING



THE DATA IS SAVED OR EXPORTED INTO A DATABASE, READY FOR ANALYSIS.

IMPORT THE DATA INTO YOUR FAVOURITE VISUALISATION AND REPORTING TOOL OR CHOOSE A SOLUTION WHICH ALREADY COMES WITH THE REPORTING FEATURES YOU WANT.

OUTPUTS

Data Reporting Tools



Data Visualisation Tools





- Why use MDC? (1)

- ✓ Faster to fill (skip patterns) and to compile (rapid or even live)
- ✓ Data more accurate (no need to re-enter pre-coded ranges and restrictions)
- ✓ Possibility to collect GPS coordinates, pictures or videos, scan barcodes



“ ...the majority of respondents are using paper forms for data collection, yet it is worth mentioning that the data of more than 70% of the paper form surveys is then entered in electronic format. Most of the respondents (69%) record into a local database (Excel or Access); while 18% insert it into an online database.

(Extract from the NOMAD survey analysis)

”



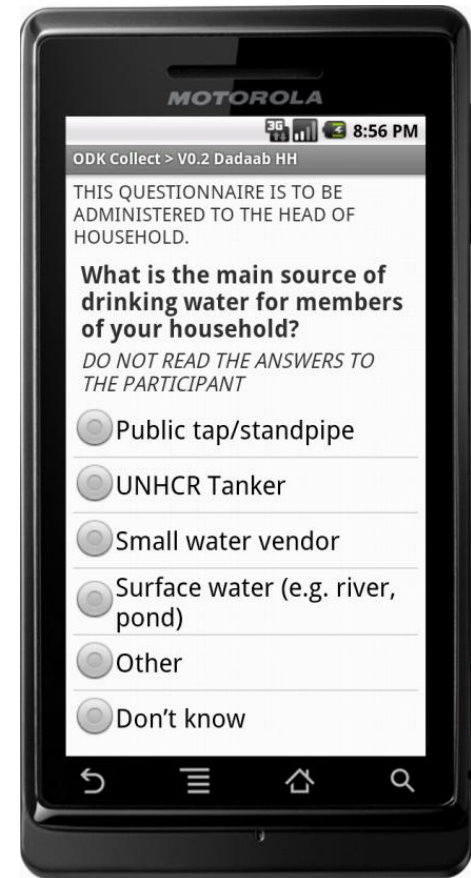
- Why use MDC? (2)

- ✓ Multi-lingual
- ✓ User friendly; motivating for enumerators
- ✓ Easy monitoring of team during the survey
- ✓ If repeated, more cost effective
- ✓ Environmentally friendly!





- Questions to ask (1):
 - ✓ Type of mobile devices (cost, availability, compatibility)
 - ✓ Link with your existing databases & analysis tools
 - ✓ Data storage & security (cloud, local)
 - ✓ One-time or reoccurring survey





- Questions to ask (2):
 - ✓ Network availability → synchronization type (Internet, SMS, LAN, manual)
 - ✓ Enumerators: own staff or partner
 - ✓ Technical level of staff (survey manager, supervisors), internal capacity building possibilities → time
 - ✓ Budget





- Best solutions depends on all these criteria
- A few examples (*not an endorsement!*)

OpenDataKit



- ✓ Open source solution for Android
- ✓ Widely used and base to many systems, new features are implemented first to it
- ✓ Free support by the community, contributions paid by sponsors are shared
- ✓ Very powerful and flexible
- ✓ Secured storage on your own servers

 A screenshot of the ODK Collect application interface on a mobile device. The screen shows a questionnaire titled "Child questionnaire (1)" with the question "If yes, from where did you seek assistance?". Below the question is a list of options with checkboxes: "Traditional/religious healer", "Community health worker" (which is checked), "Private clinic/pharmacy", "Shop/kiosk", "Clinic", and "Hospital". The interface also shows a status bar at the top with the time "20:16" and a battery icon.

DoForms, Enketo, Kobo, Magpi, Majella...

- ✓ Commercial integrated solutions based on ODK
- ✓ User friendly, no need to own servers (cloud)
- ✓ Work on several platforms (Android, IOS, Windows M)
- ✓ Include analysis tools





FrontlineSMS



- ✓ Designed for alert systems and data collection through SMS (FrontlineForm)
- ✓ Open source & multi-platforms
- ✓ Widely used over the world, active community of users

openXdata



- ✓ Open source solution designed for low-cost smartphones (Symbian)
- ✓ International community of users (many universities)
- ✓ Flexible but less user-friendly

Humanitarian Data Toolkit

- ✓ Toolkit including hardware (computer, solar panel, scanner, phones...) and software for MDC
- ✓ Offline/online
- ✓ Offers analysis tools





- Challenges

- ✓ Technical (IT) knowledge required and more training needed
- ✓ Restructuring of the survey; less visual than a paper survey; establish different collection procedures
- ✓ Electrical power dependant
- ✓ Higher risk (security?)





Thank you for your attention!

 <http://humanitarian-nomad.org>

 humanitarianNOMADproject@gmail.com

 [@HUMnomad](https://twitter.com/HUMnomad)

 <https://www.facebook.com/HumanitarianNOMADproject>

