



Myanmar Efforts to Use Space based information in Disaster Risk Reduction and Disaster Management

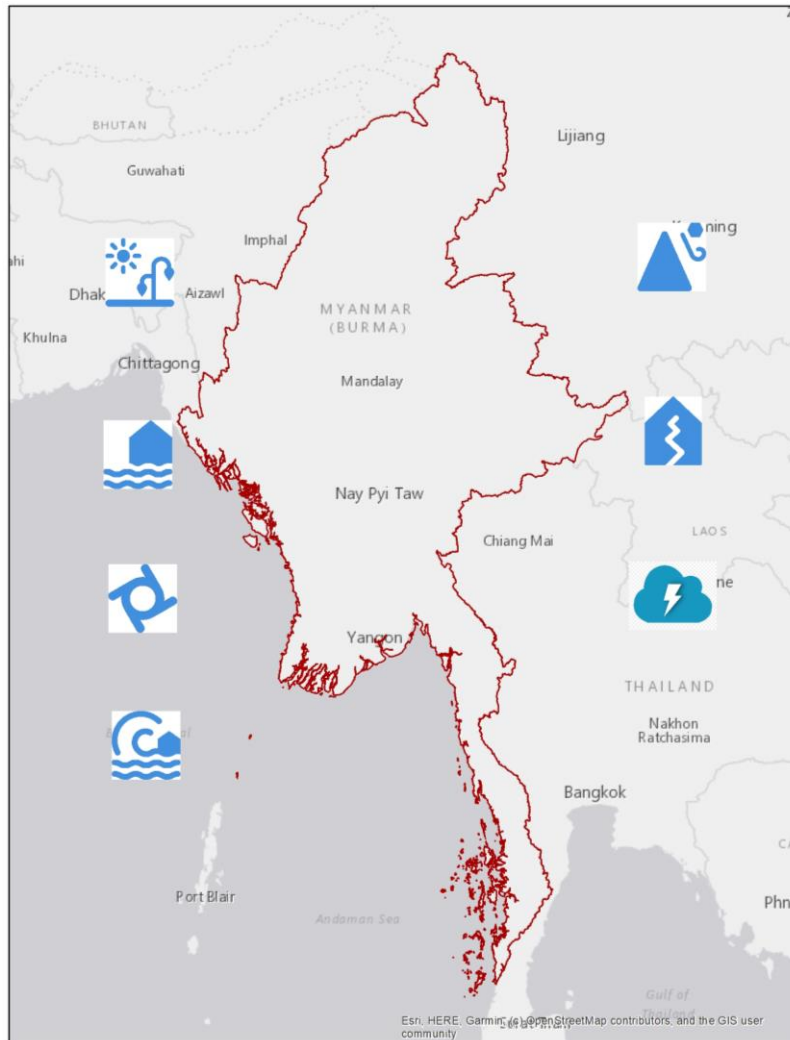
Thiri Maung

Department of Disaster Management

Ministry of Social Welfare Relief and Resettlement, Myanmar

10th Annual UN-SPIDER Conference,
November 25th, 2020

Myanmar and its hazard Profile



- Myanmar is located in north-westernmost of mainland Southeast Asia. It lies along the Indian and Eurasian Plates, to the southeast of the Himalayas.
- Due to its geographic position, Myanmar is vulnerable to a wide range of natural disasters
- Meteorological and Geological Hazards
- one of the most vulnerable countries at risk of climate



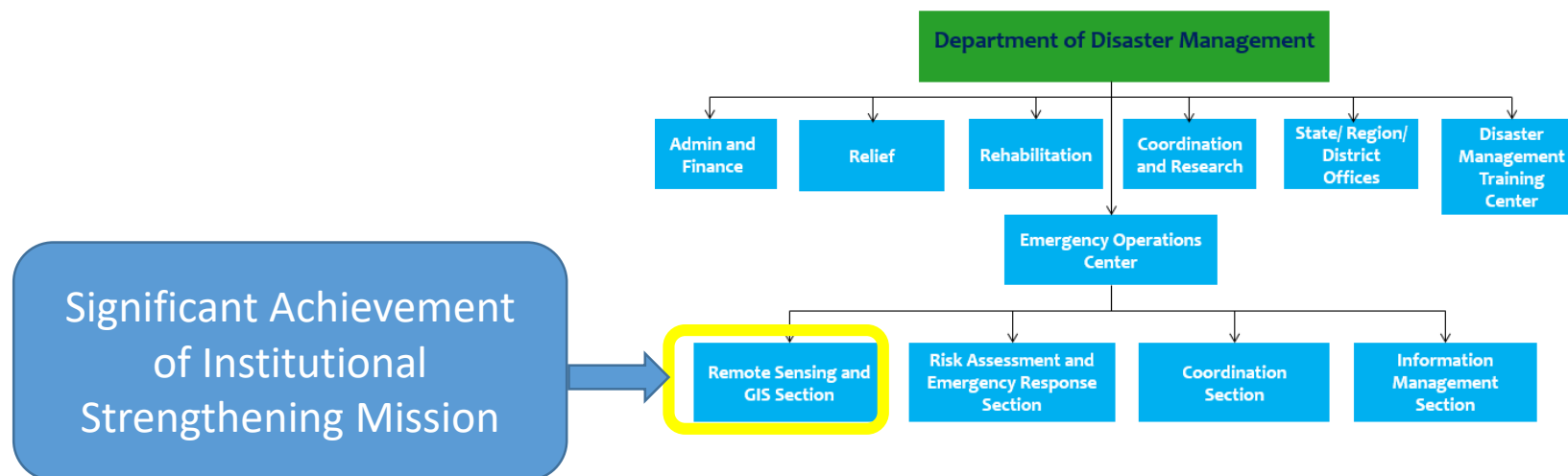
Major Disasters in Myanmar

No.	Date	Disaster	Damage and Loss
1	26-12-2004	Tsunami	-
2	2/3-May-2008	Cyclone Nargis	Death - (138,373) people Damage and Loss - (11.7)Trillion Kyats
3	22-10-2010	Cyclone Giri	Death – 57 people Damage and Loss - (0.024)Trillion Kyats
4	24-3-2011	Tahlay Earthquake	Death – 76 people, Injury – 100 people Damage and Loss - (3031.30)Million Kyats
5	19/20-10-2011	Magway Flash Flood	Death & lost – 161 people Damage and Loss - (15465.25)Million Kyats
6	11-11-2012	Tabaikkyin Earthquake	Death – 18 people, Injury – 114 people Damage and Loss - (8140.12)Million Kyats
7	2015 June to August	Severe flood in 12 States and Regions	Death – 97 people, affected – over 1.6 million people, Damage and Loss – (4,424.3515) Million Kyats
8	Annual Flood since July, 2016	Flooding across the country	Death- 9 people, affected – over 1 million, Damage and Loss- (1110.03) Million Kyats



Achievement in Myanmar after UN-SPIDER's Technical Advisory Mission

- Two times of High level advocacy meetings for Institutional Strengthening
- National Training Course on Geoinformatics for Disaster Risk Management
- Training on “Geo-informatics for Disaster Risk Management”
- Training on “Earth Observation Technologies for Landslide Hazard and Risk Assessment”
- Training on “Post Disaster (Earthquake) Rapid Damage Assessment”



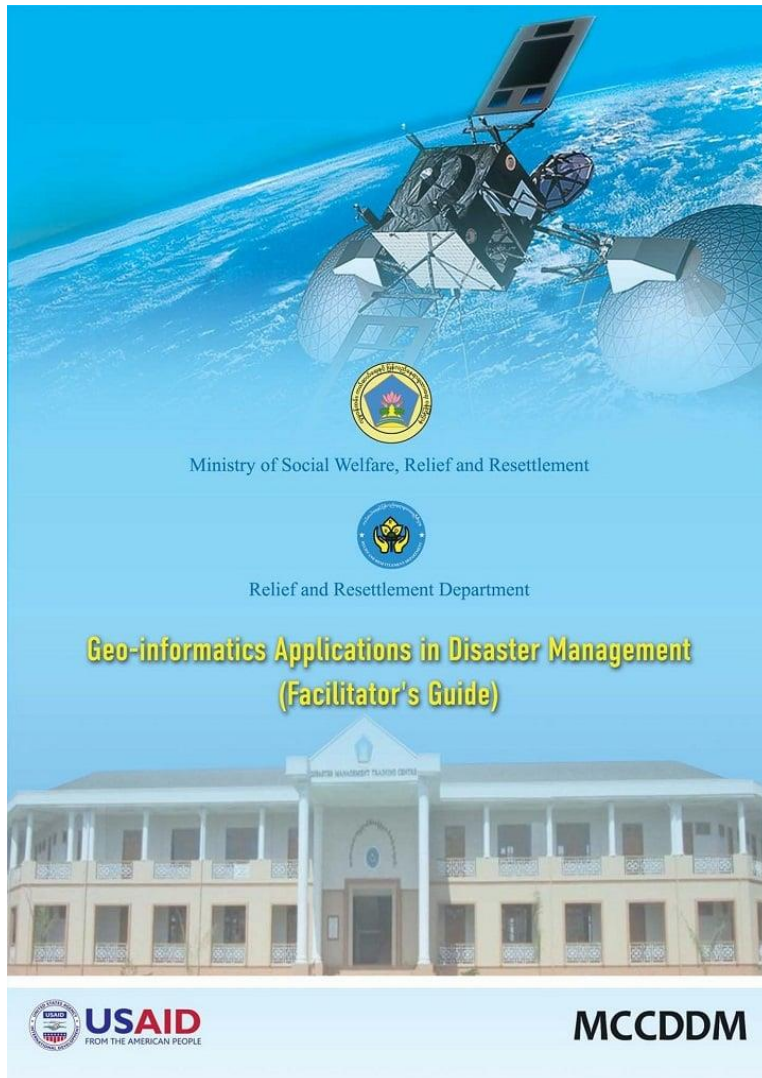
Charter Authorized User & Project Management Training



PM training participants in Myanmar.

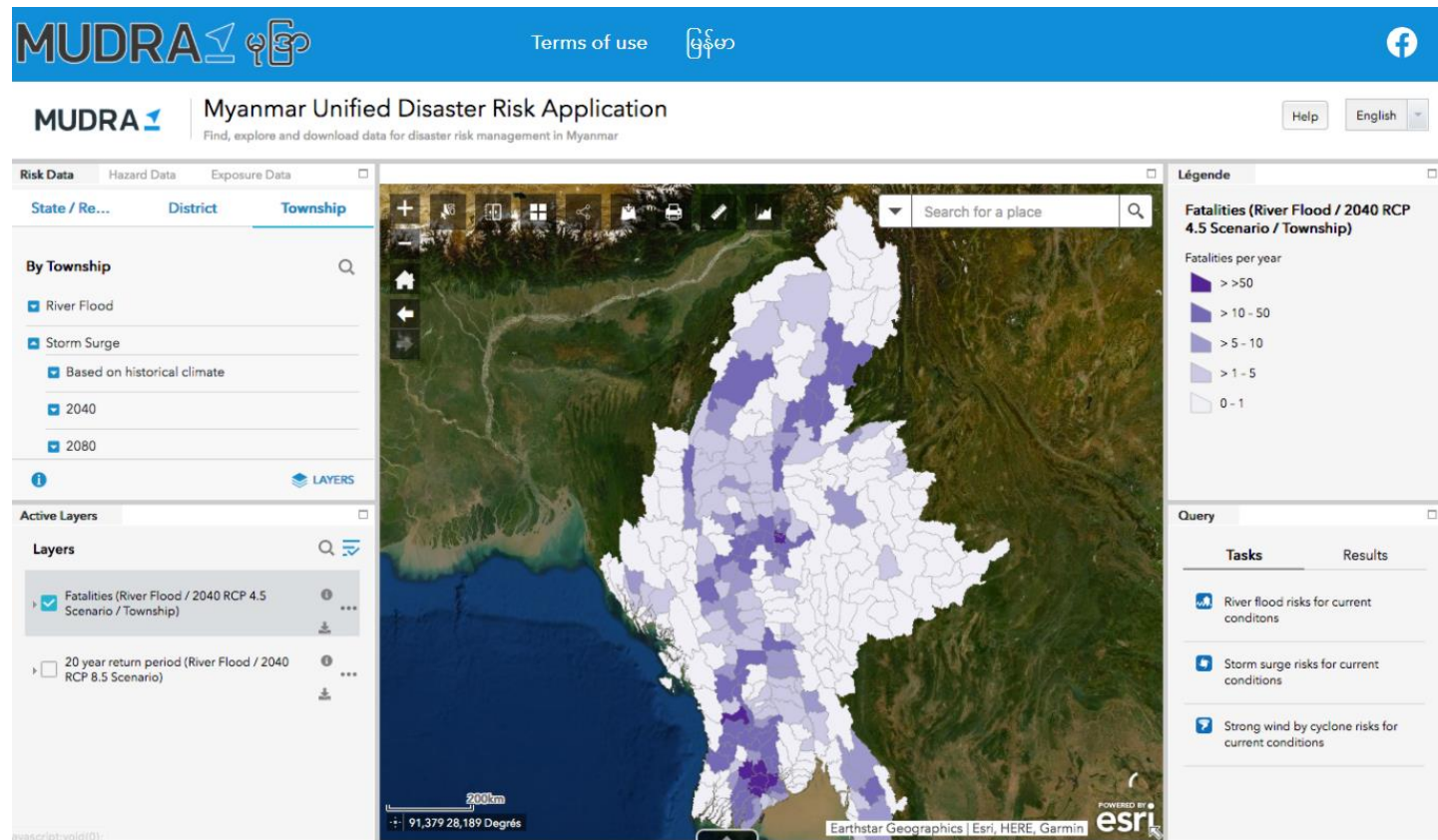
- Being a Charter Authorized User, the Project Management Training was convened on 19 September, 2017 to be able to submit requests and access observations from satellites for disaster response at the Department of Disaster Management in Nay Pyi taw Myanmar.

Development of Training Course on Geo-informatics Applications in Disaster Management



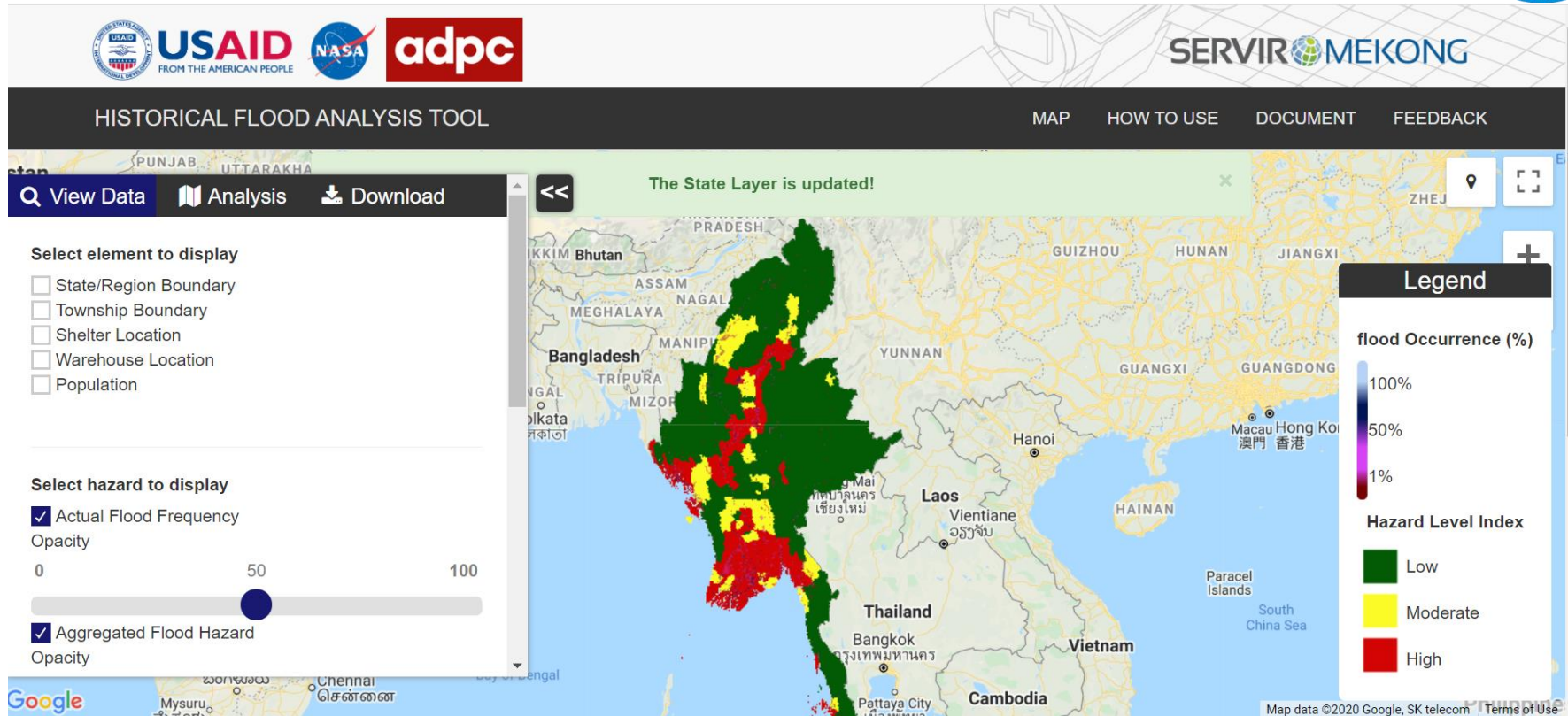
- hands-on exercise manual on Geographic Information Systems, Remote Sensing, Geographic Positioning System (GPS) and some applications of these technologies on Disaster Risk Management (DRM) especially for hazard mapping, monitoring, and risk assessment module as well as the damage assessment module.
- The practical manual developed using open source like QGIS, RStudio, Google Earth Pro, and Google Earth Engine.

Myanmar Unified Platform for Disaster Risk Application (MUDRA) <https://www.mudra-ddm.info/>



- Tool to support decision makers with informed decision making of spatial and temporal scales
- provides information about current risk as well as future risk due to climate change associated risks for riverine floods, storm surge and cyclone wind

Historical Flood Analysis Tool



- designed to provide the information regarding flood-prone areas (e.g. frequency of seasonal flooding cycles)

THANK YOU

