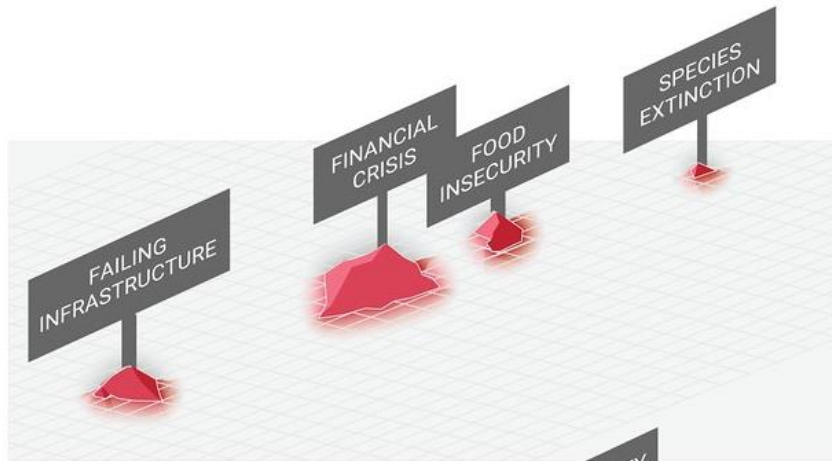


Opportunities to connect space-based information to understanding systemic risks: COVID-19 & beyond

Lessons learned during the unprecedented pandemic situation
10th Annual UN-SPIDER Conference

24 November 2020

Realization of risk



Context



Driven by



GVR

Global Assessment Report
on Disaster Risk Reduction

2019

By definition, systemic risks are emergent, and not necessarily obvious using contemporary hazard-plus-hazard approaches.

Emergent risks are typically obvious in retrospect – a result of a series of events that cross human-imposed boundaries.

Polar climate affects trade wind strength in tropics

Date: November 20, 2020
Source: University of Hawaii at Manoa
Summary: The i
has l

nature

Explore our content

nature > news > article

Dreaded
Start to E
Abrupt Cl

By TWC India Edit Team · 29 C



Arctic sea ice.
(NASA/Kathryn Hansen)

Coronavirus disease 2019 (COVID-19)
Situation Report – 71



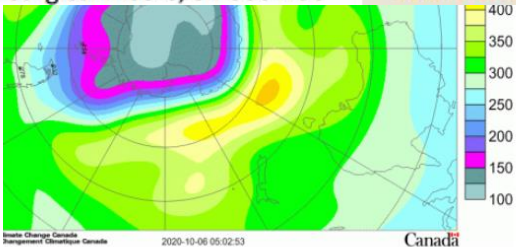
Data as reported by national authorities by 10:00 CET 31 March 2020

HIGHLIGHTS

- No new countries/territories/areas reported cases of COVID-19 in the past 24 hours.
- As mentioned by the Director-General in his regular media briefing yesterday, ensuring free movement of essential health products is vital for saving lives and curbing the social and economic impacts of the pandemic. WHO is working intensively with partners to increase access to life-saving products, including diagnostics, PPE, medical oxygen, ventilators and more. For more information: <https://www.who.int/dg/speeches/detail/who-director-general-s-opening-remarks-at-the-media-briefing-on-covid-19---30-march-2020>
- Operations support and logistics continues to monitor critical markets and in partnership with the Pandemic Supply Chain Network, has increased engagement and coordination with private companies. Since the beginning of the outbreak, OSL has shipped more than 800 000 surgical masks, 54 000 N95

SITUATION IN NUMBERS
total (new) cases in last 24 hours

Globally
750 890 confirmed (57 610)
36 405 deaths (3301)
Western Pacific Region
104 868 confirmed (1093)
3671 deaths (22)
European Region
423 946 confirmed (31 131)
26 694 deaths (2733)
South-East Asia Region
4215 confirmed (131)
166 deaths (8)
Eastern Mediterranean Region
50 349 confirmed (4020)



Australia faces more fires, drought as
climate continues to heat

Country's weather bureau says higher temperatures and less rainfall
creating conditions for more extreme weather events.



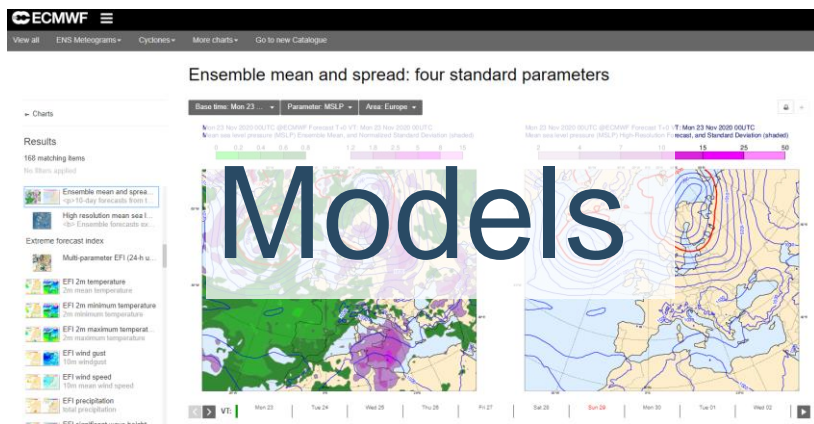
English

m Reform Search

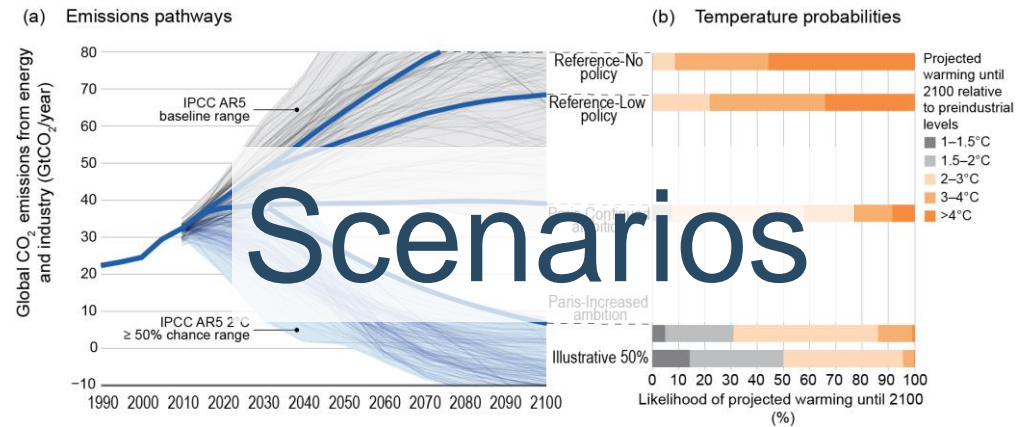
Contact us

ne hole is large and deep

What we know about how to monitor and understand systemic risk



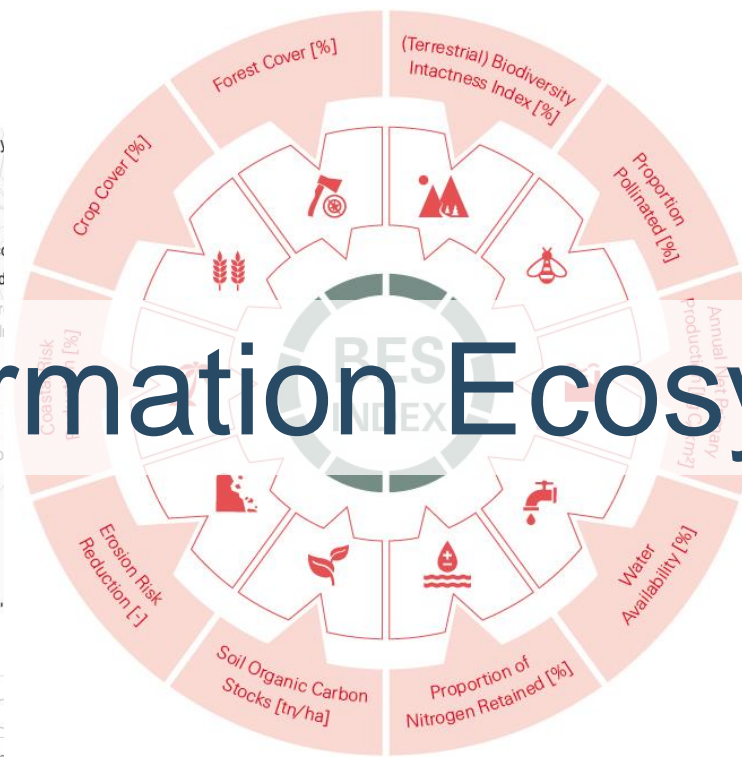
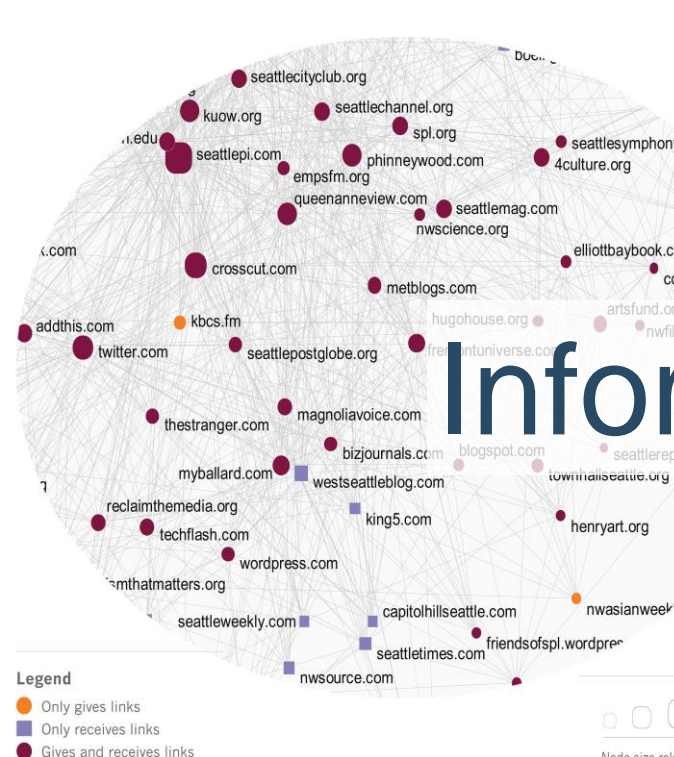
Models



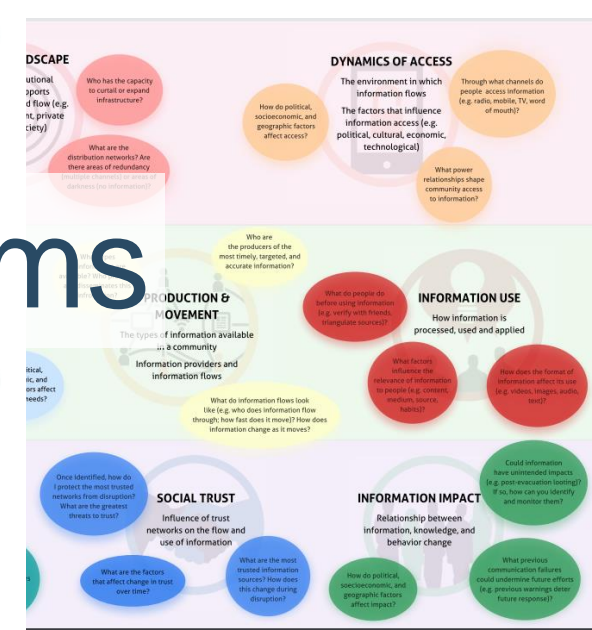
Scenarios

are part of

Information Ecosystems



- Habitat Intactness
- Pollination
- Air Quality & Local Climate
- Water Security
- Erosion Control
- Coastal Protection
- Food Provision
- Timber Provision



What are the lessons for space-based information to be useful in catching important indicators, drivers, levers, trends so that risk can be managed?

1. More than the sum of its parts
2. Show the people what they need to know
3. Help allies to understand what you produce and look for ways to add allies
4. Help those who have the means to influence research/policies/programmes to align their work to evidence
5. Disaster Management is too late
6. Options to reduce risk are everywhere – beyond hazards

Mapping flood damage



Highlighting flood plains that are bad construction zones.

Thank you.

Adam FYSH – adam.fysh@un.org

UNDRR Global Risk Analysis and Reporting Section