



# Health Database and Web-Mapping for Emergency Responses

## **A Prototype Application for ETHIOPIA**

**Third United Nations International UN-SPIDER Workshop:  
Disaster Management and Space Technology- From Concepts to  
Application**

**Bonn, Germany, 21-23 October 2009**

By: Meron Kinfemichael (UNECA)  
email: [mmichael@uneca.org](mailto:mmichael@uneca.org)



## ECA's Involvement

### SDI

f1 The United Nations Economic Commission for Africa (UNECA) is assisting member States to develop spatial data infrastructure as appropriate mechanisms for:

Management

Production

Dissemination and

Use of spatial data and information products



# ECA's Involvement

## SDI

fi As part of SDI, ECA works with member States to:

Build fundamental, core and thematic datasets

Develop capacity and retain a critical mass of expertise in Africa

Develop Standards and data interoperability

Geodetic reference (AFREF) and

Metadata production



# Background

## Time

f1 Looking at the number of health projects in Ethiopia and the amount of time needed to report an incident to the Ministry of Health, this application is:

Easy to detect the rate of increase or decrease at real-time

Fast data collection and manipulation



# Objective of this project

## Time

- f1 Saves the amount of time the data reaches decision makers and users:



Avoids paper work that delays data entry

- f1 Easy to issue early warnings and preparedness:

Usually within few days after the onset





## Objective

### **Data Accuracy**

Direct input of data by health or field workers

Lessens typing errors that might be created from copying the information from paper notes





# Health Facilities

## Accessibility

- f1 Map the location, distribution and coverage of health facilities in Ethiopia
- f1 Calculate the average distance or time that patients and health care providers have to travel to the nearest health facility from incidents





# Health Facilities

## Accessibility

- 1 Estimate the percentage of population that can be served by health facilities at a given distance (buffering)





# Health Facilities

## Availability

Incorporate other attribute information:

- number of beds in each facility

- availability of electricity (24hrs)

- availability of doctors or health care providers...etc

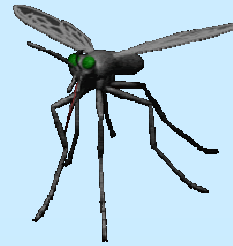


## Health Facilities

Identify and examine emergency conditions

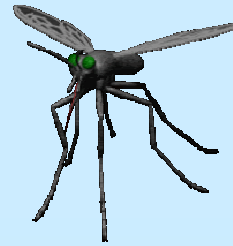
Find out the emergency status and take the appropriate measures

# Malaria



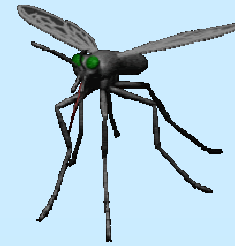
- Identify the most vulnerable areas and the number of population affected
- develop the best malaria prevention and control strategies

# Malaria



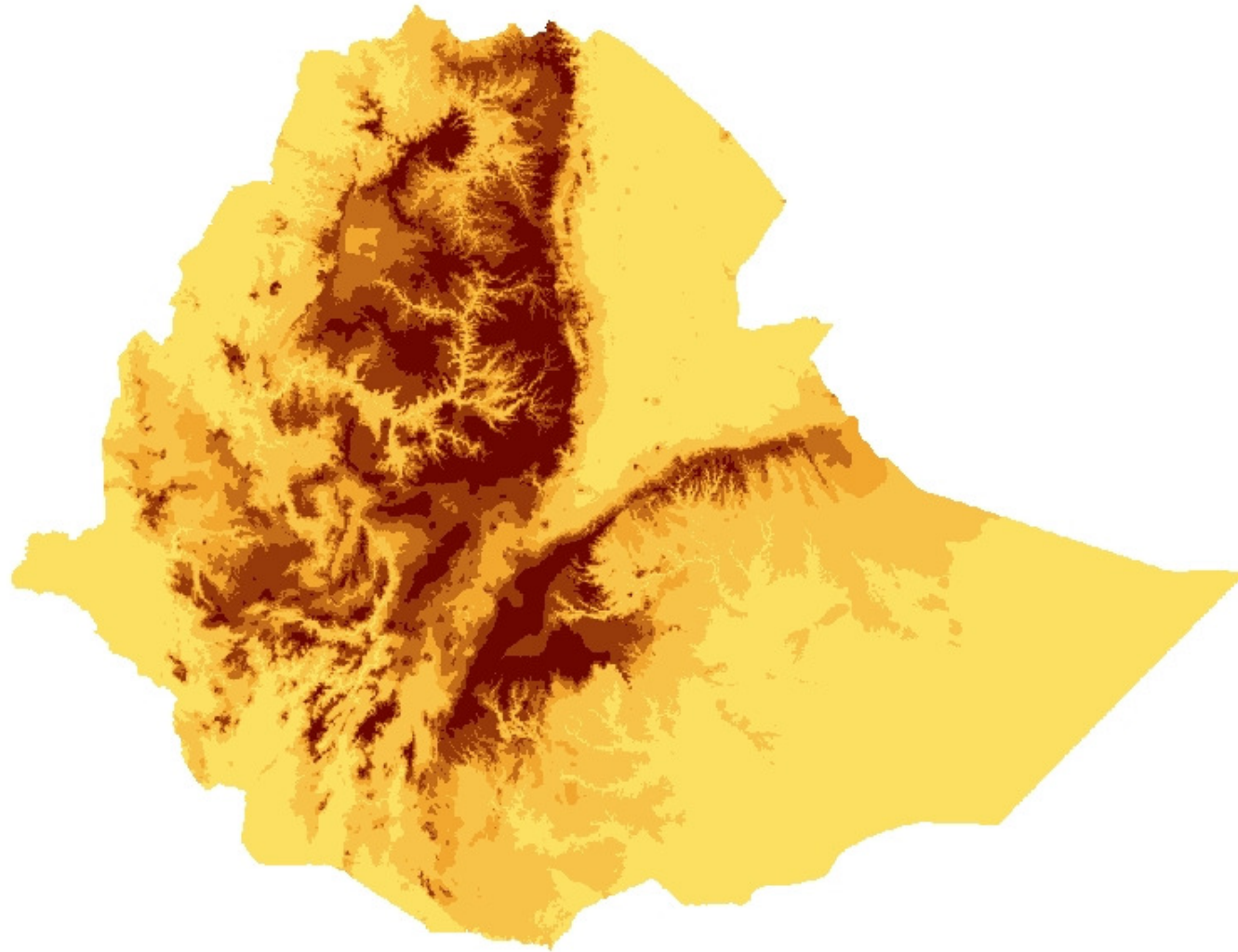
- 36% of the population is out of the reach of the health service coverage
- The annual average number of cases reported over the period from 2001 – 2005 was **9.4million** (range 8.4 – 11.5)
- the annual average number of confirmed cases was 487,984 (2001 – 2005)

# Malaria

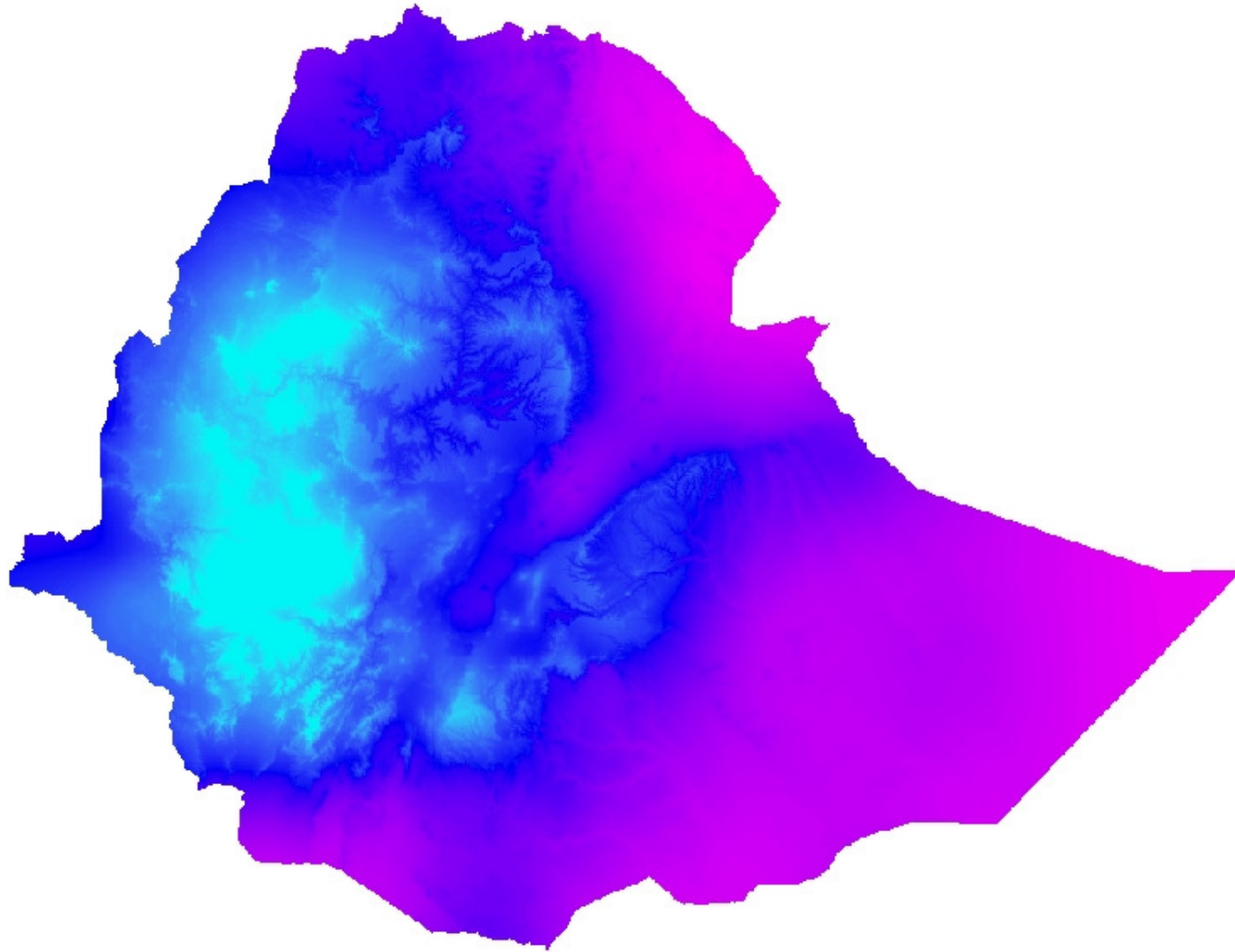


- i Focusing on Prevention mechanisms, combining:
  - 1 Altitude
  - 1 Rainfall
  - 1 Temperature

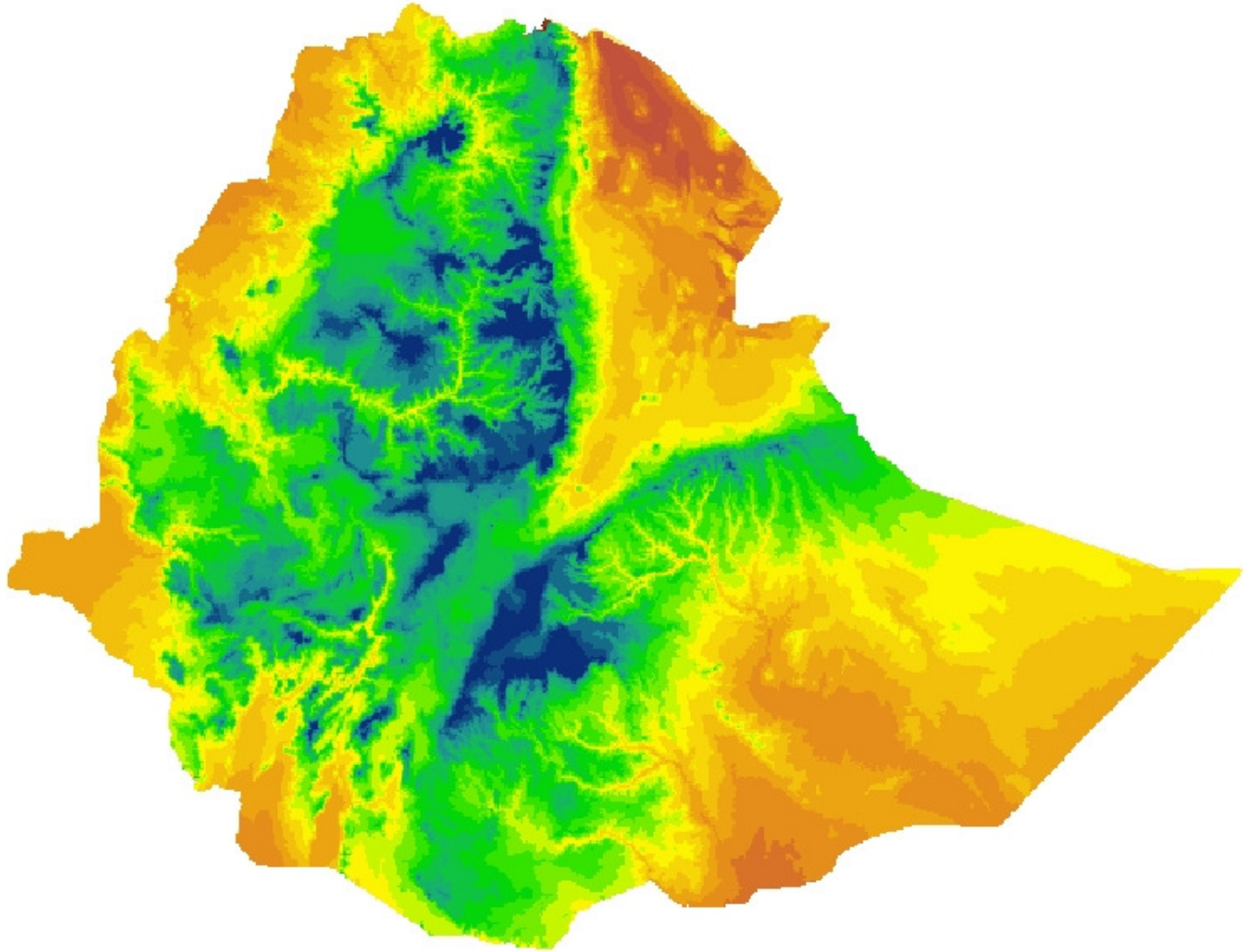
# Elevation



# Mean Annual Precipitation

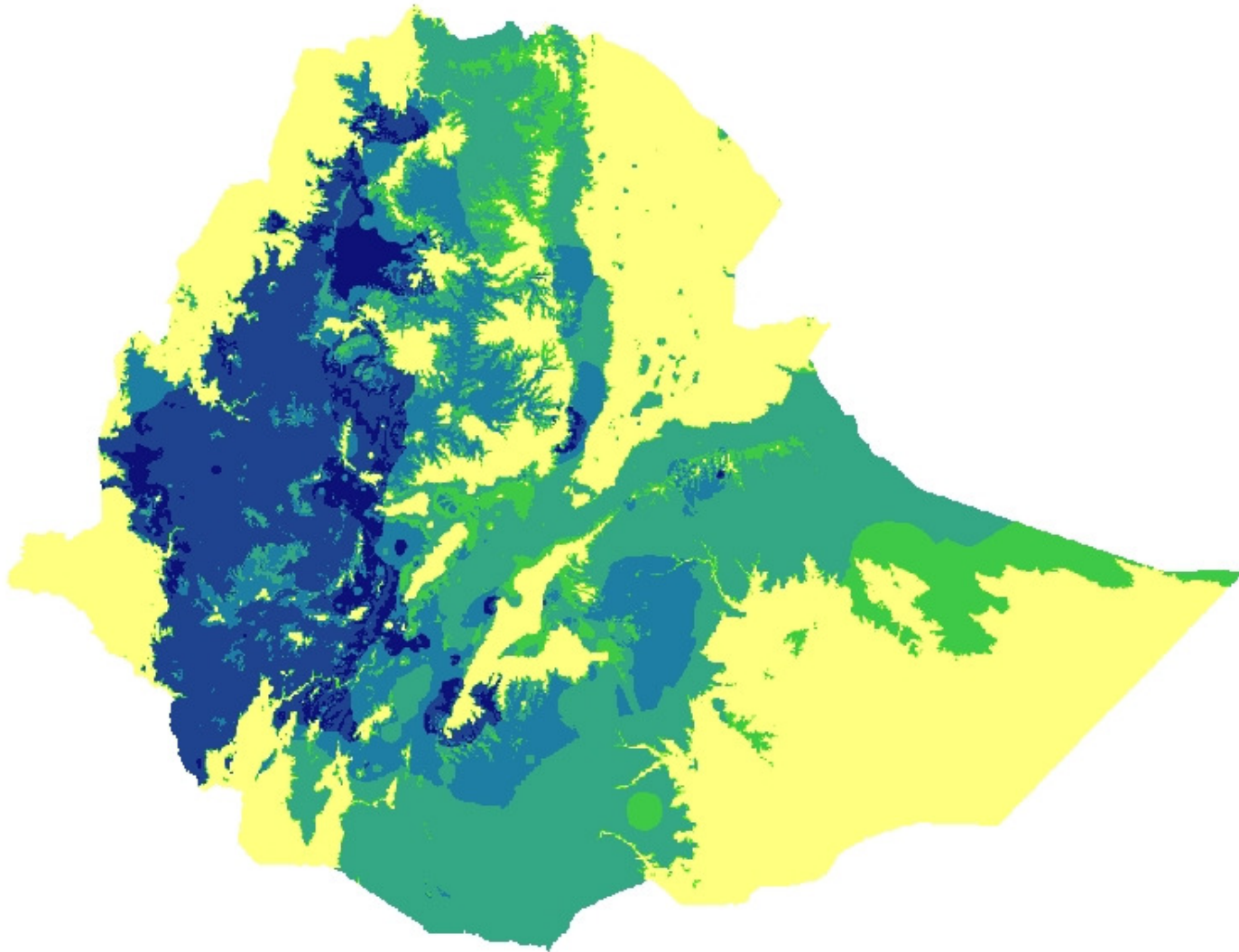


# Mean Annual Temperature





# Overlaying the three factors



# Future Prospects for this Application

- f1 Mobile GIS
- f1 Network Analyst
- f1 Online imagery analysis
- f1 Develop the same application for member countries



# Thank You

<http://giss.uneca.un.org/HealthDBETH>