



北京大學
PEKING UNIVERSITY

United Nations International Conference on Space-based
Technologies for Disaster Risk Reduction

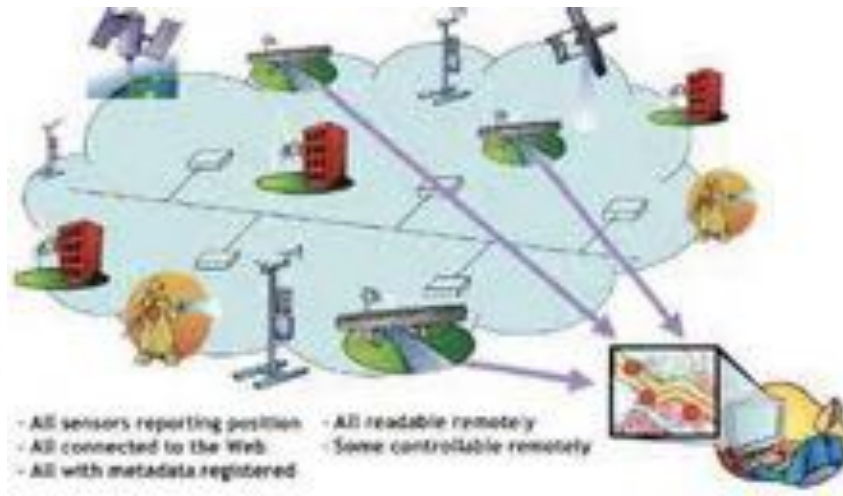
Social Sensing based on Big Geo-data

Professor Yu Liu
Peking University
24 Oct. 2018 @Beijing

- With the development of ICT, we have entered the **BIG DATA**



Mobile Devices



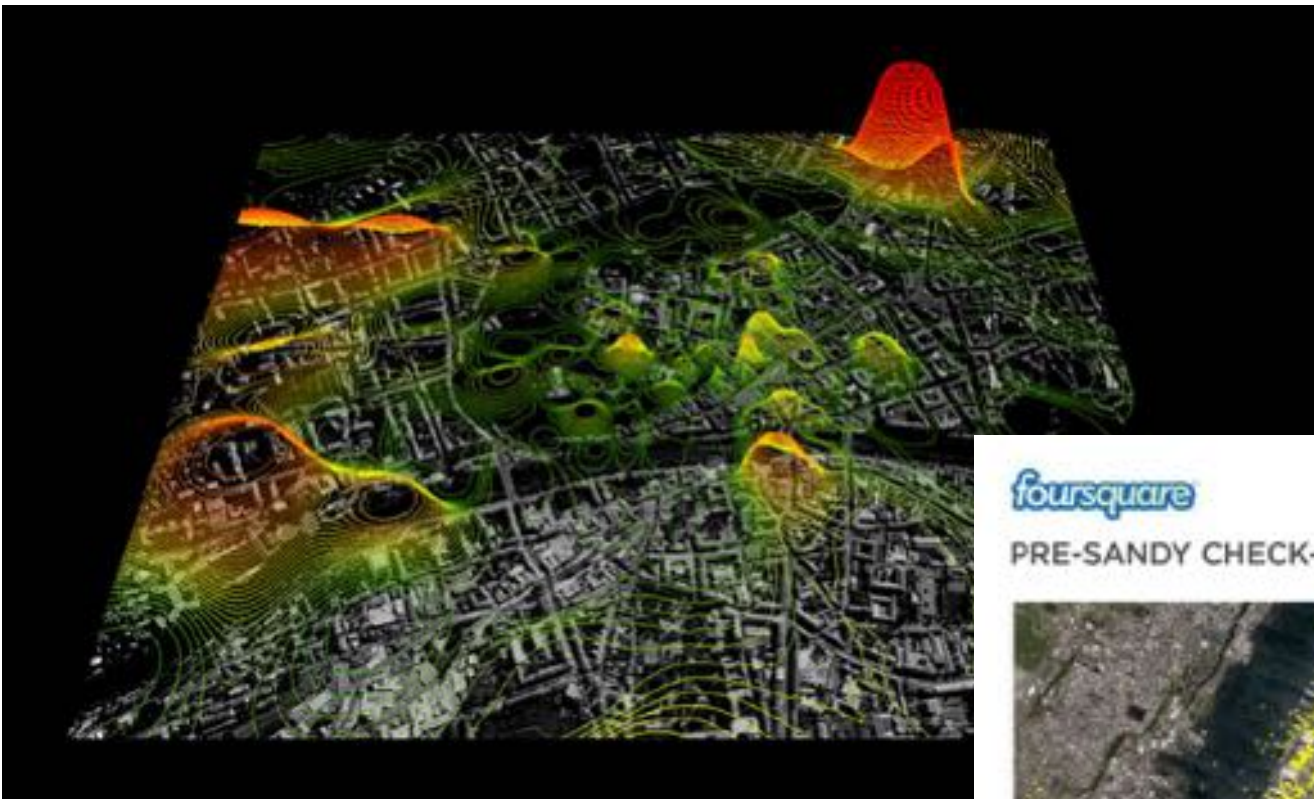
Sensor web



GPS-enabled vehicles

- Properties of Big Geo-Data
 - Besides 4Vs (Volume, Velocity, Variety, Variability)
 - Spatio-temporal tags
 - Associated with individuals
 - Including:
 - Location based social media data, Mobile phone data, Taxi data, Metra card data...

Examples of Big Geo-data (1)



Population distribution: estimated using mobile phone data

foursquare

PRE-SANDY CHECK-INS SATURDAY, 10/27



POST-SANDY CHECK-INS WEDNESDAY, 10/31

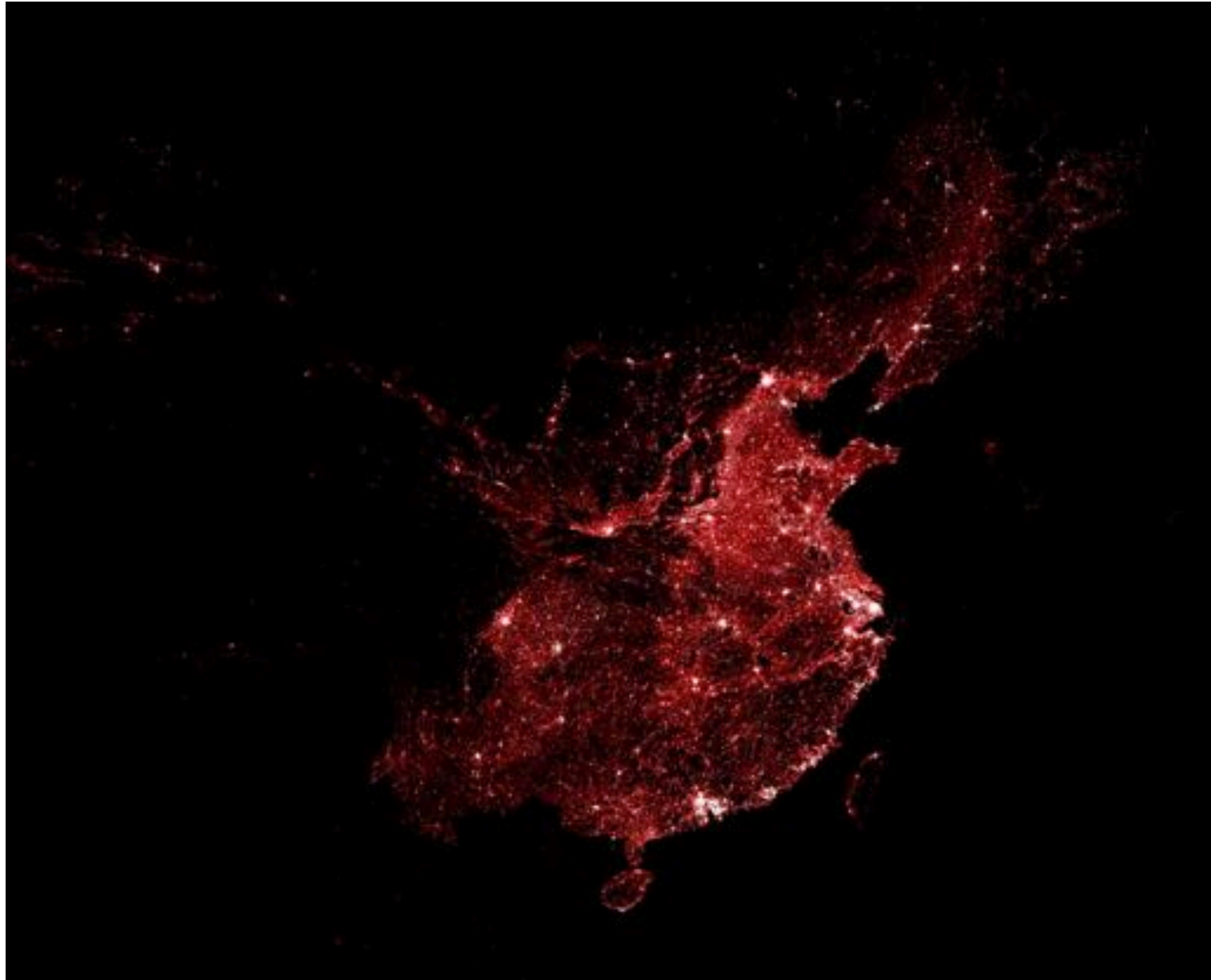


Population distribution before and after Hurricane Sandy: estimated using Foursquare check-in data

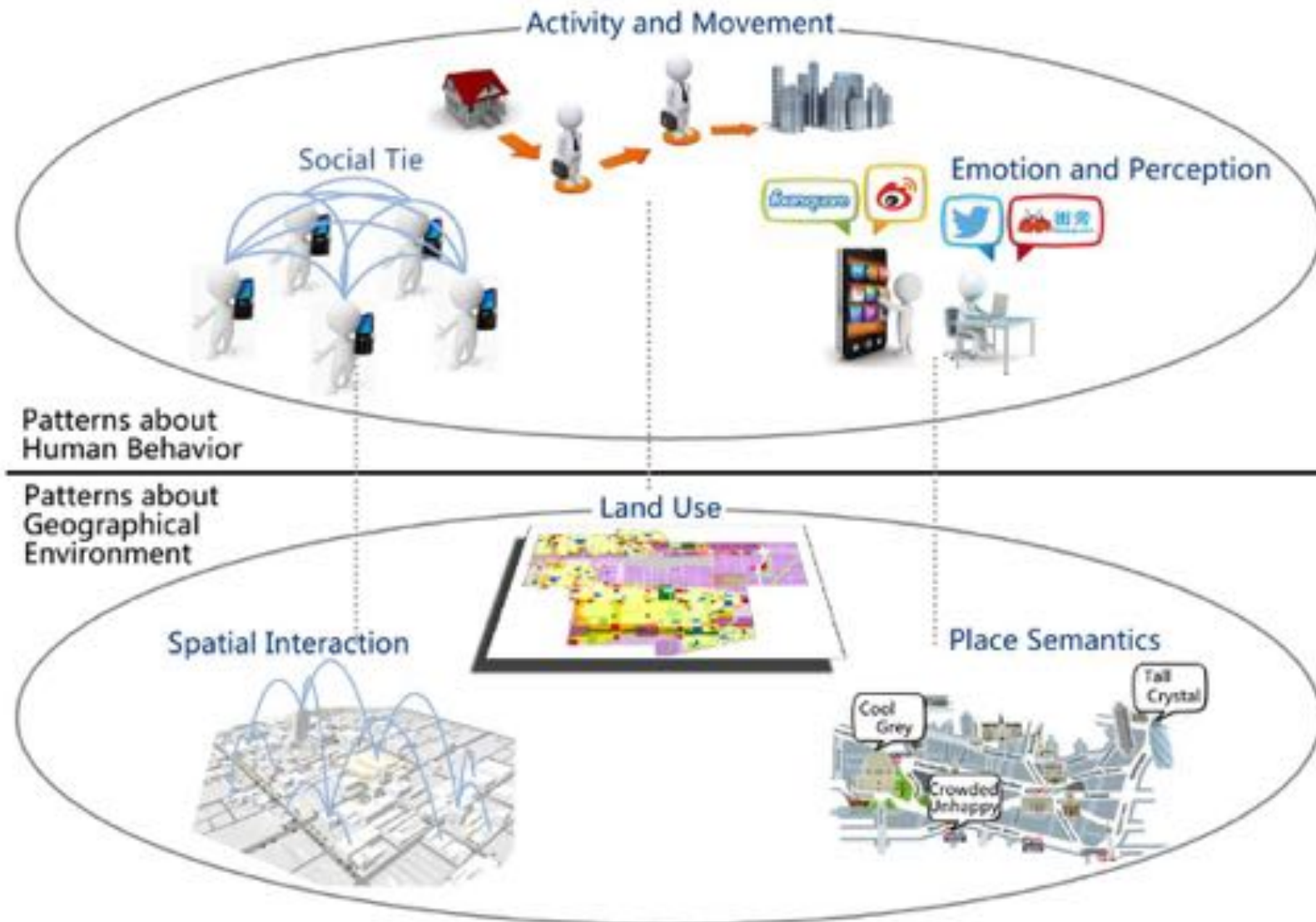


Taxi data
of NYC

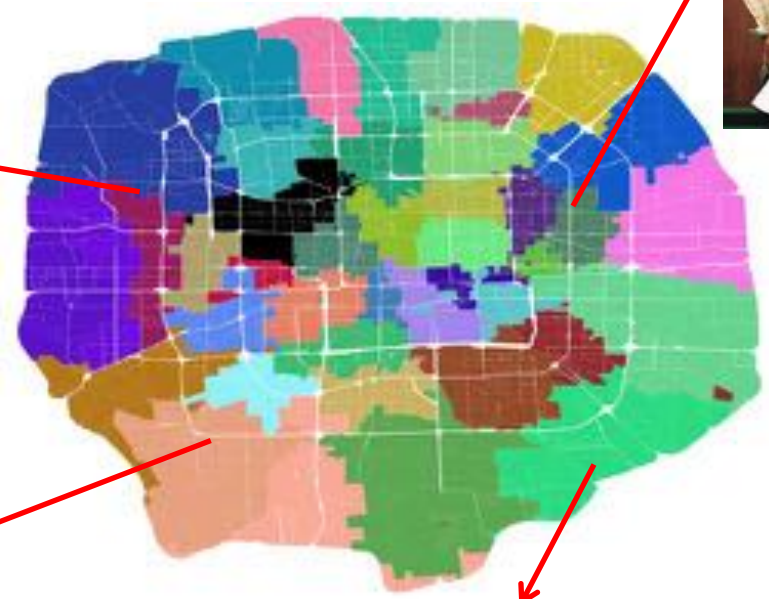
Nationwide population from
Baidu mobile app data



- Individual-based geospatial big data can be viewed as an analogue of remote sensing data in social science research
- While **remote sensing** data have been widely and successfully used to map physical features, social sensing data can capture human behaviors and consequently reveal socio-economic features
- Why the term “Sensing”
 - Analogue of remote sensing
 - Each individual plays the role of a sensor

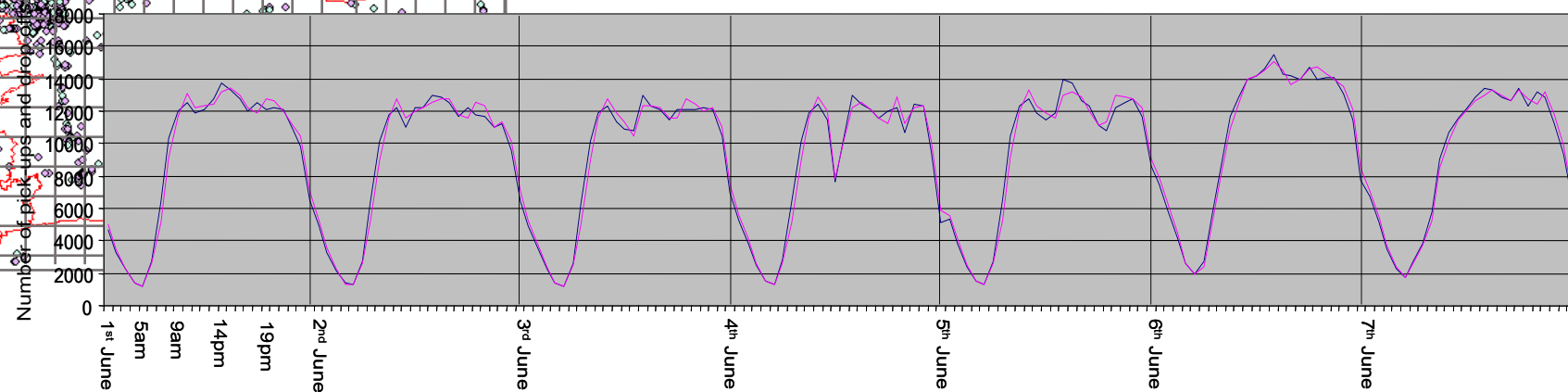
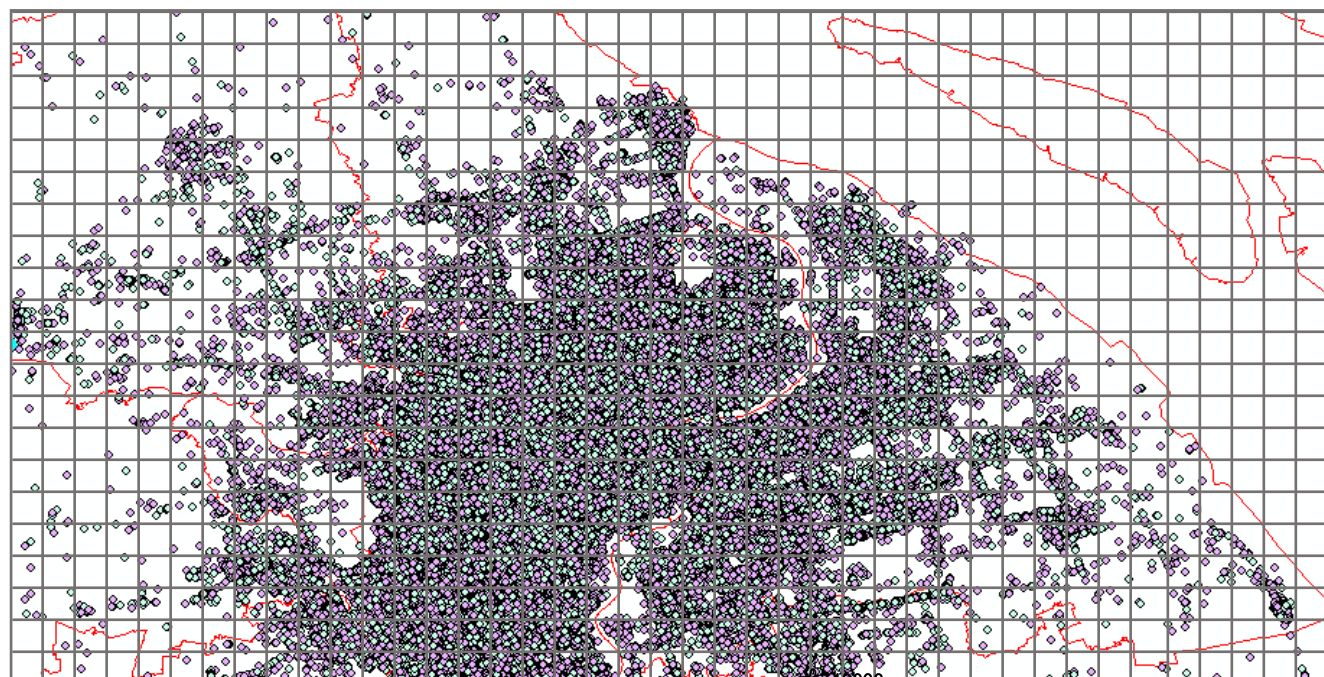


Understanding Intra-urban heterogeneity



Different places
→ Different
landscapes +
Different
demographical
properties



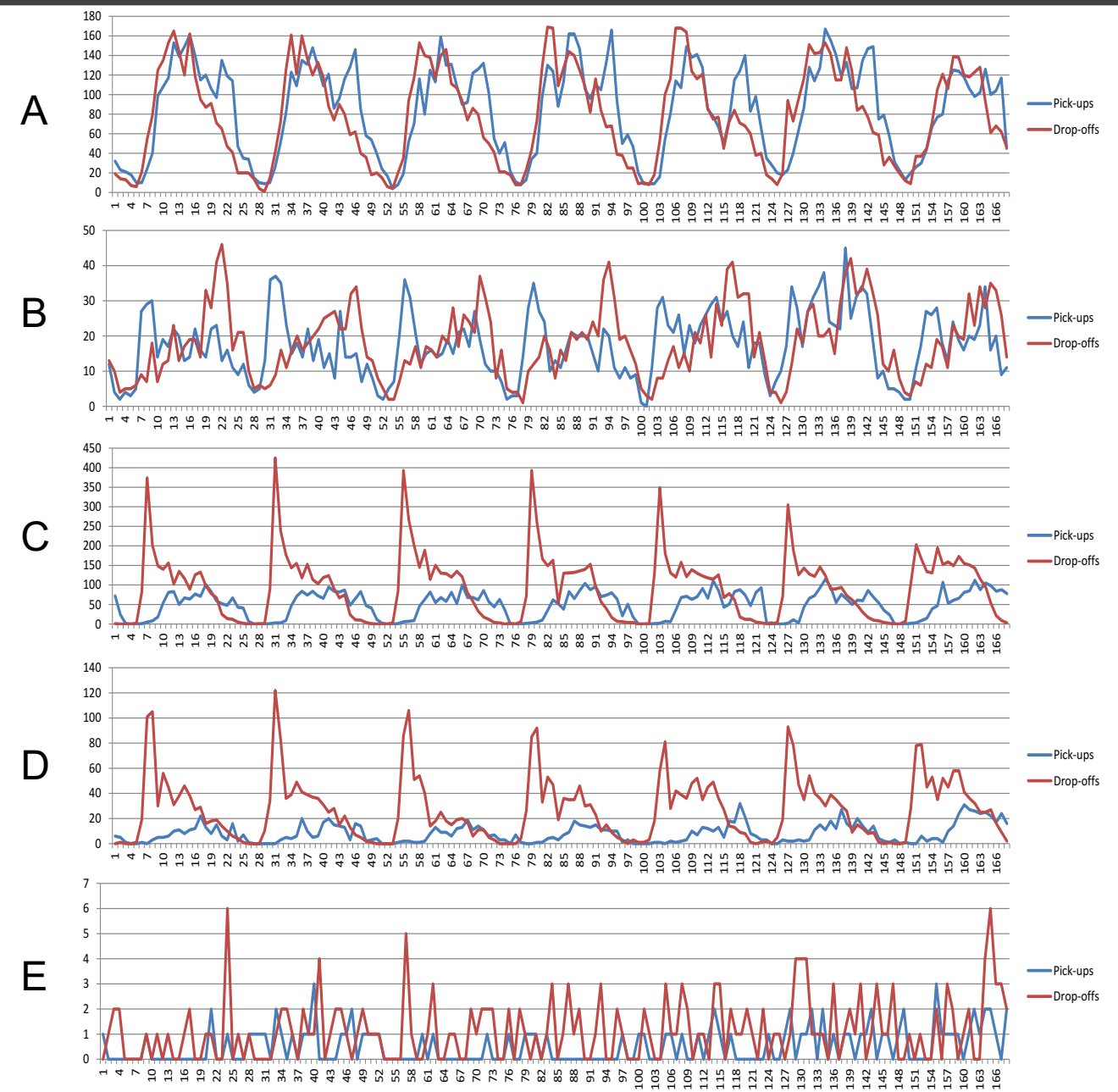


— Pick up — Drop off

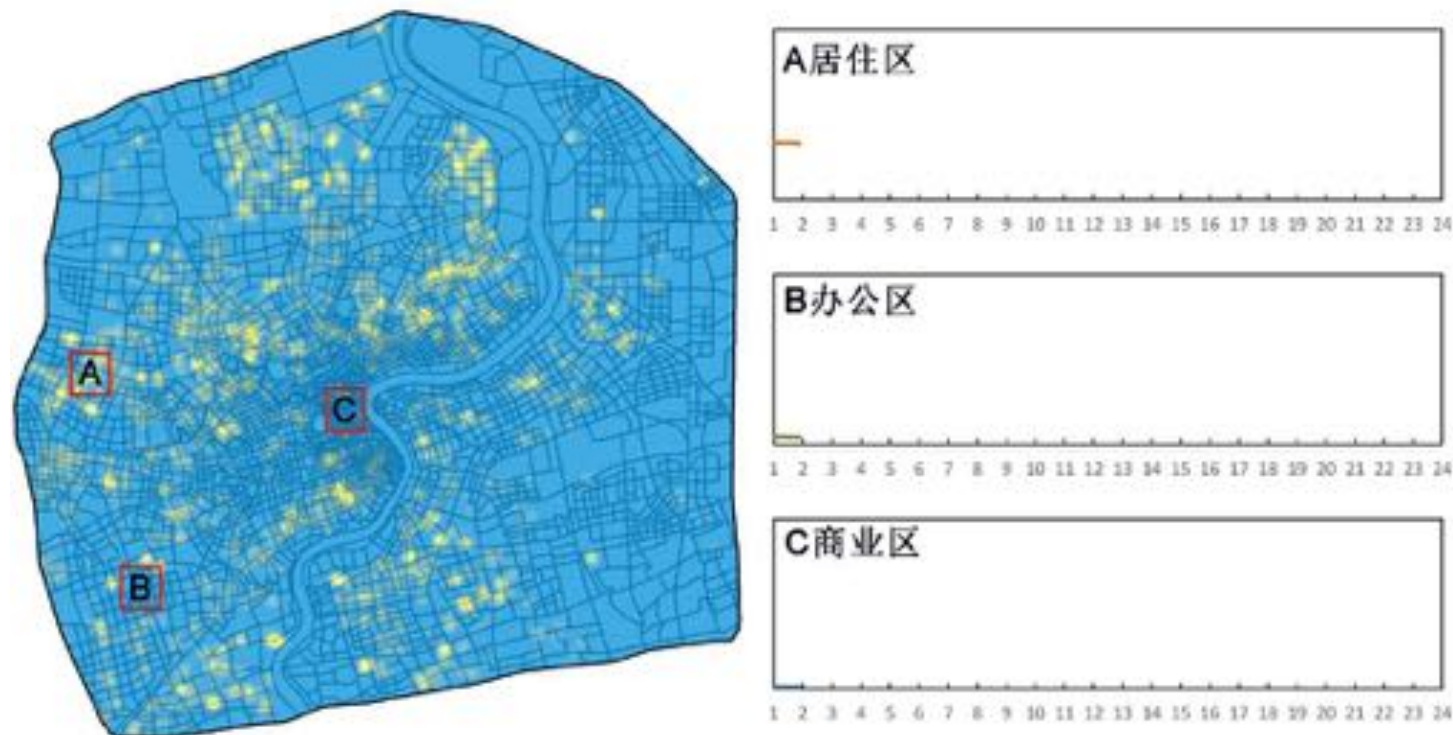


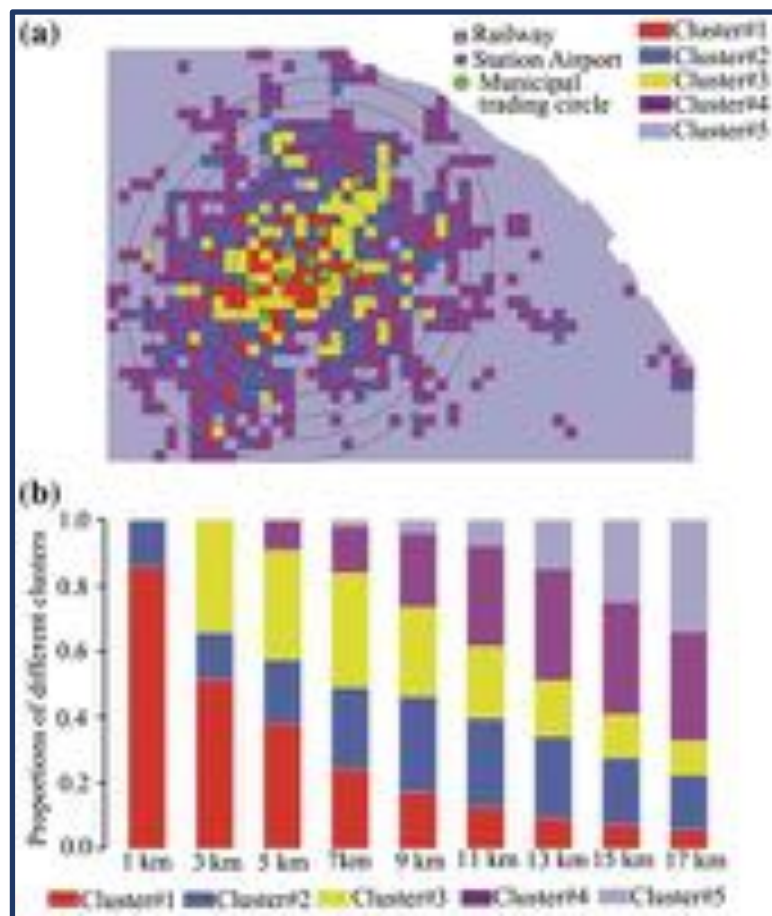
Hongqiao Airport

Pudong Airport

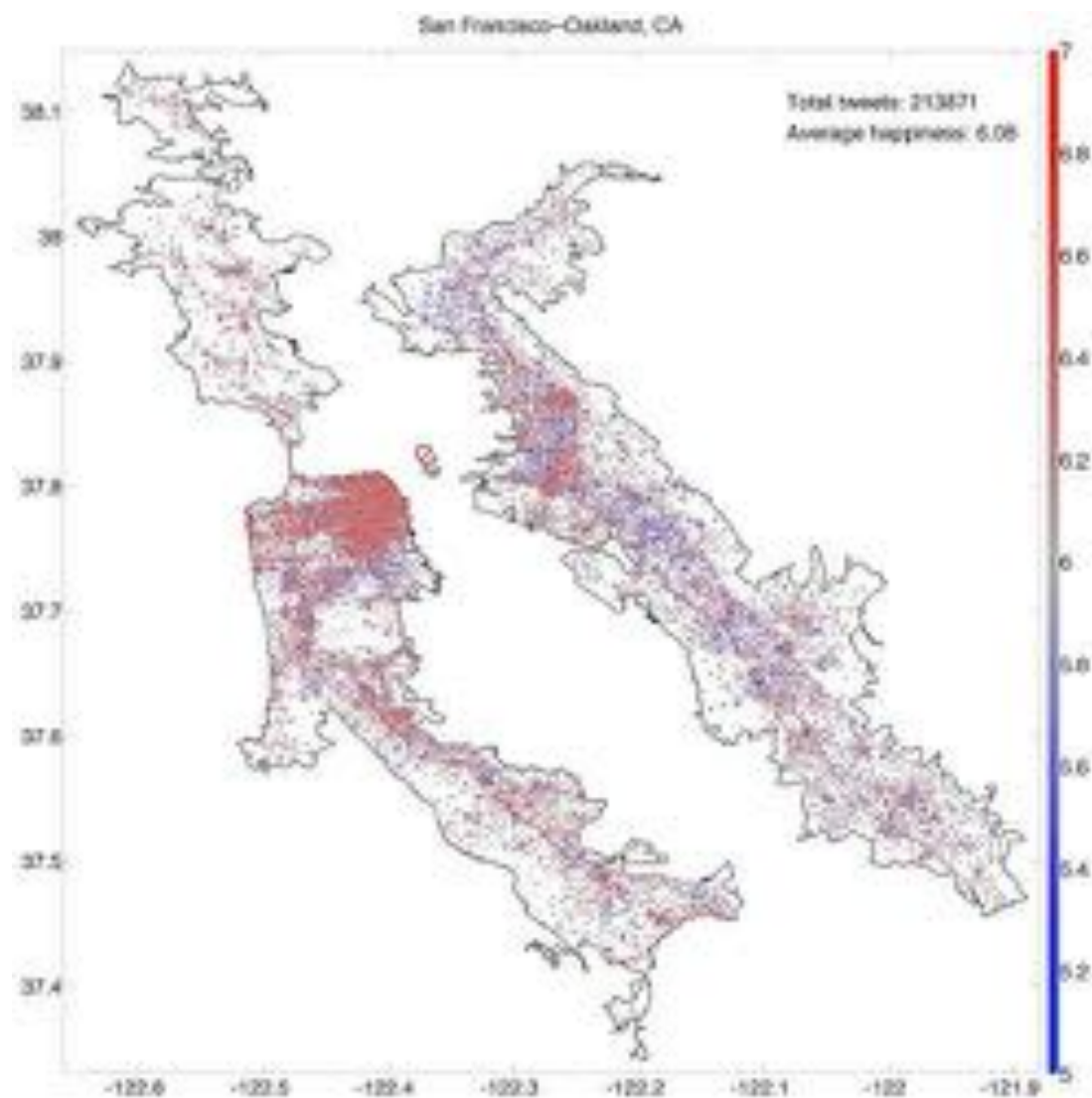
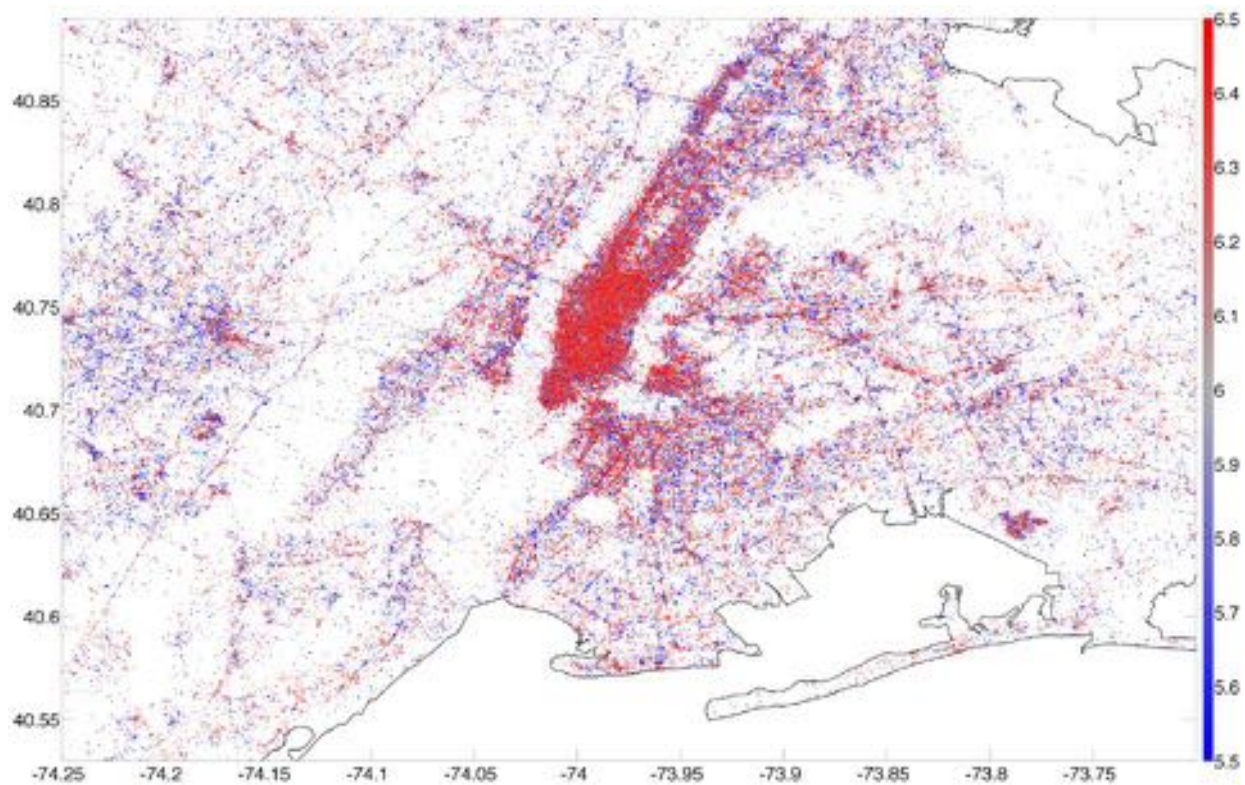


Given that different urban land uses are associated with different temporal signatures of human activities, which can be captured by various big geo-data, we can infer land use categories from the observed temporal signatures.





Reveal the concentric ring urban structure from taxi data and social media data, using unsupervised classification



Measuring happiness using natural language analysis based on Twitter data



"little girl is eating piece of cake."



"baseball player is throwing ball in game."



"woman is holding bunch of bananas."



"black cat is sitting on top of suitcase."



"a young boy is holding a baseball bat."



"a cat is sitting on a couch with a remote control."

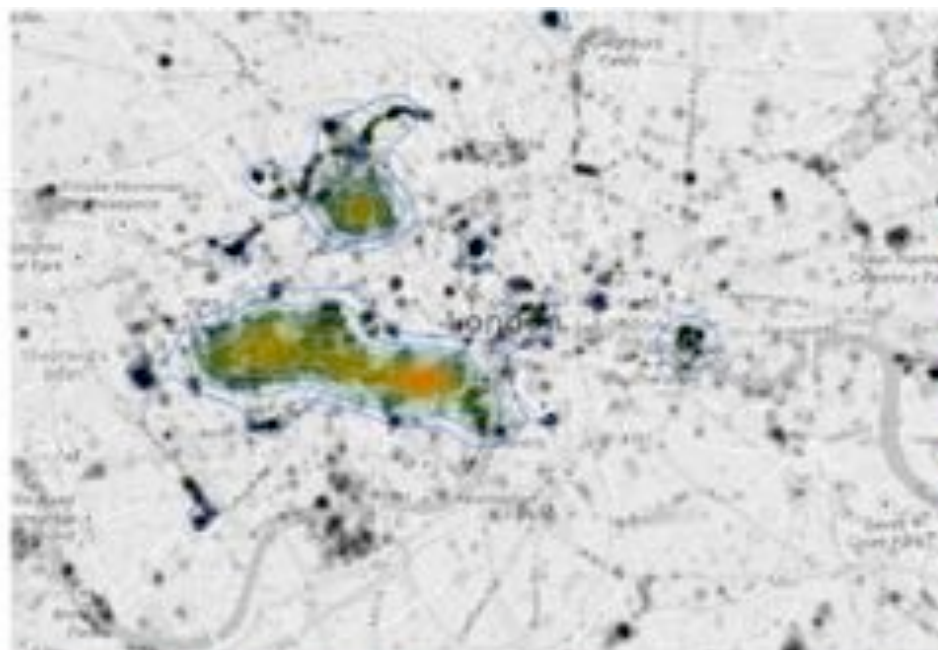


"a woman holding a teddy bear in front of a mirror."



"a horse is standing in the middle of a road."

Image
content
Analysis



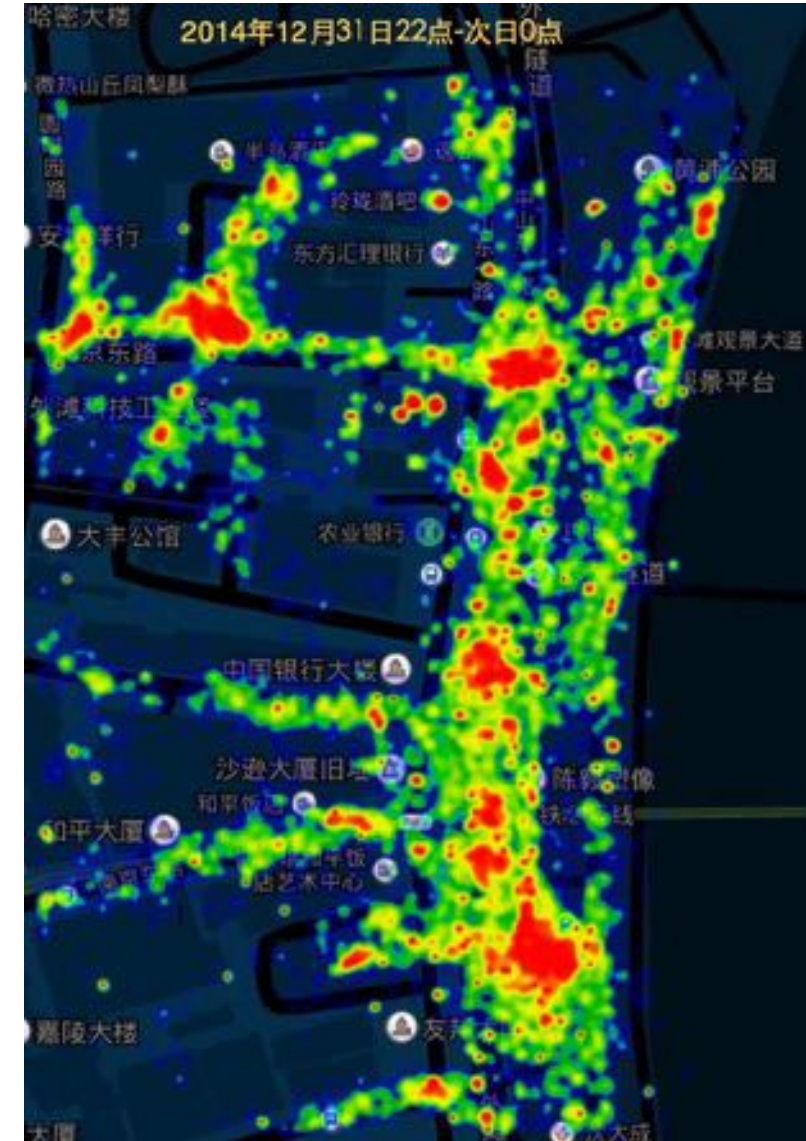
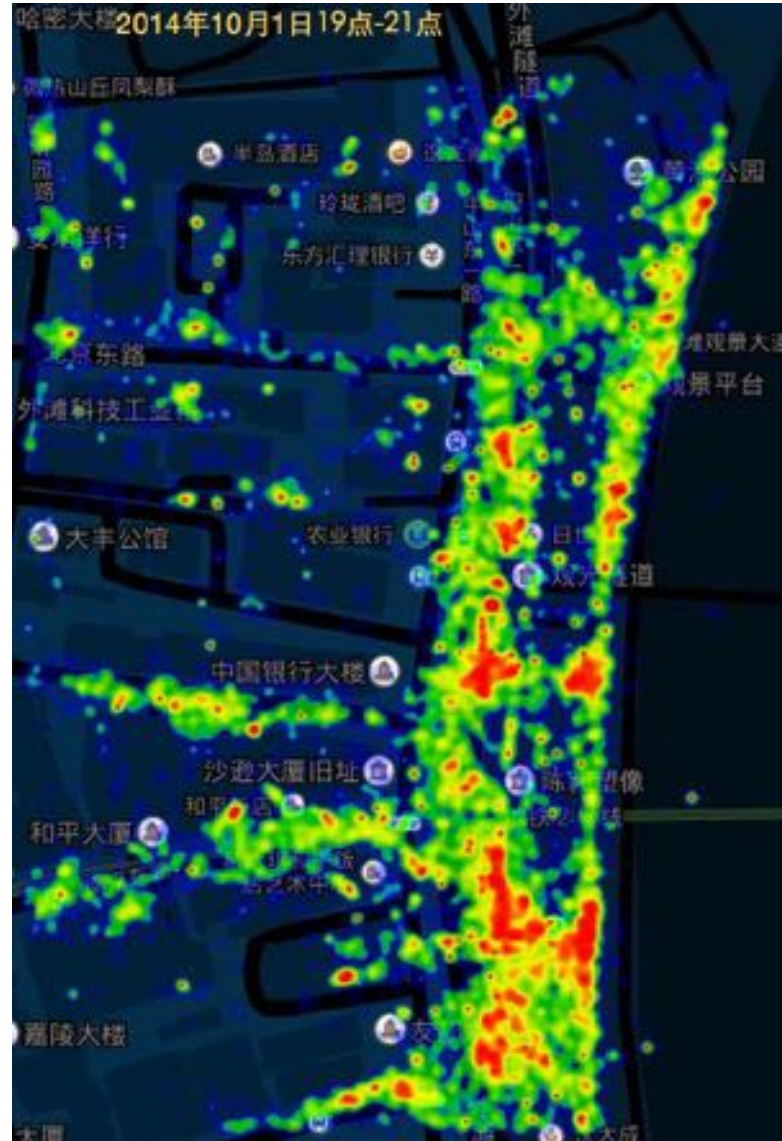
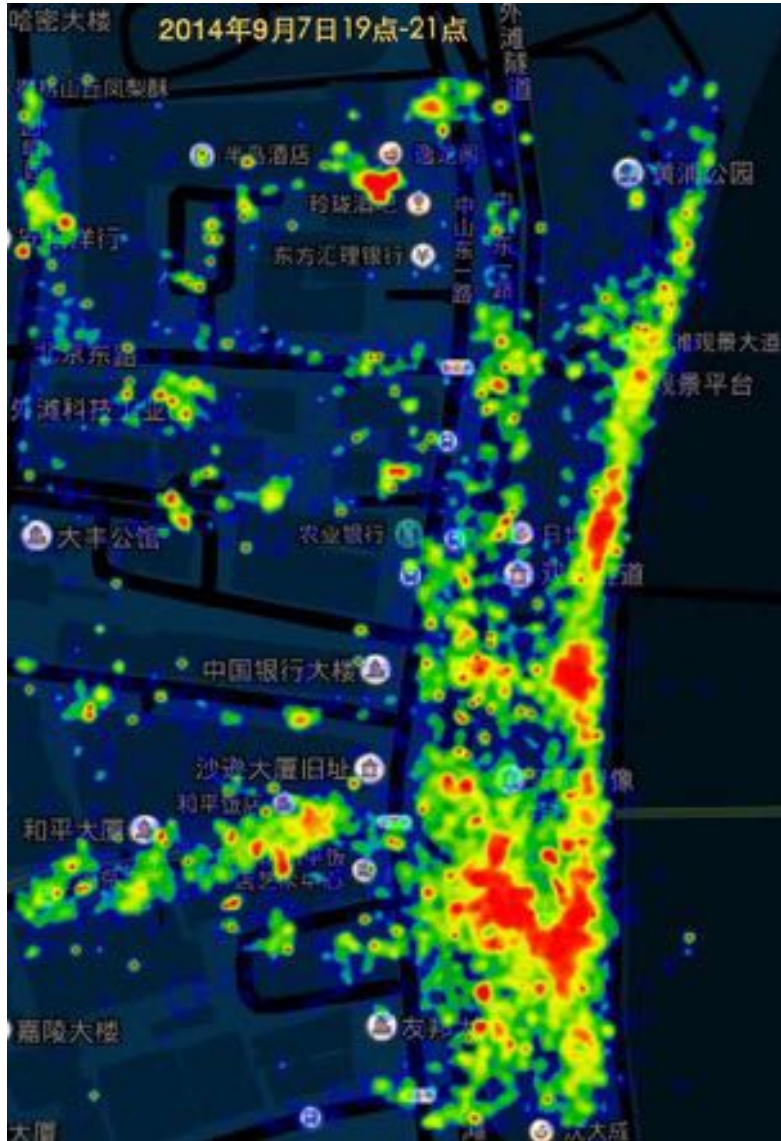
Measuring greenness using crowdsourcing images



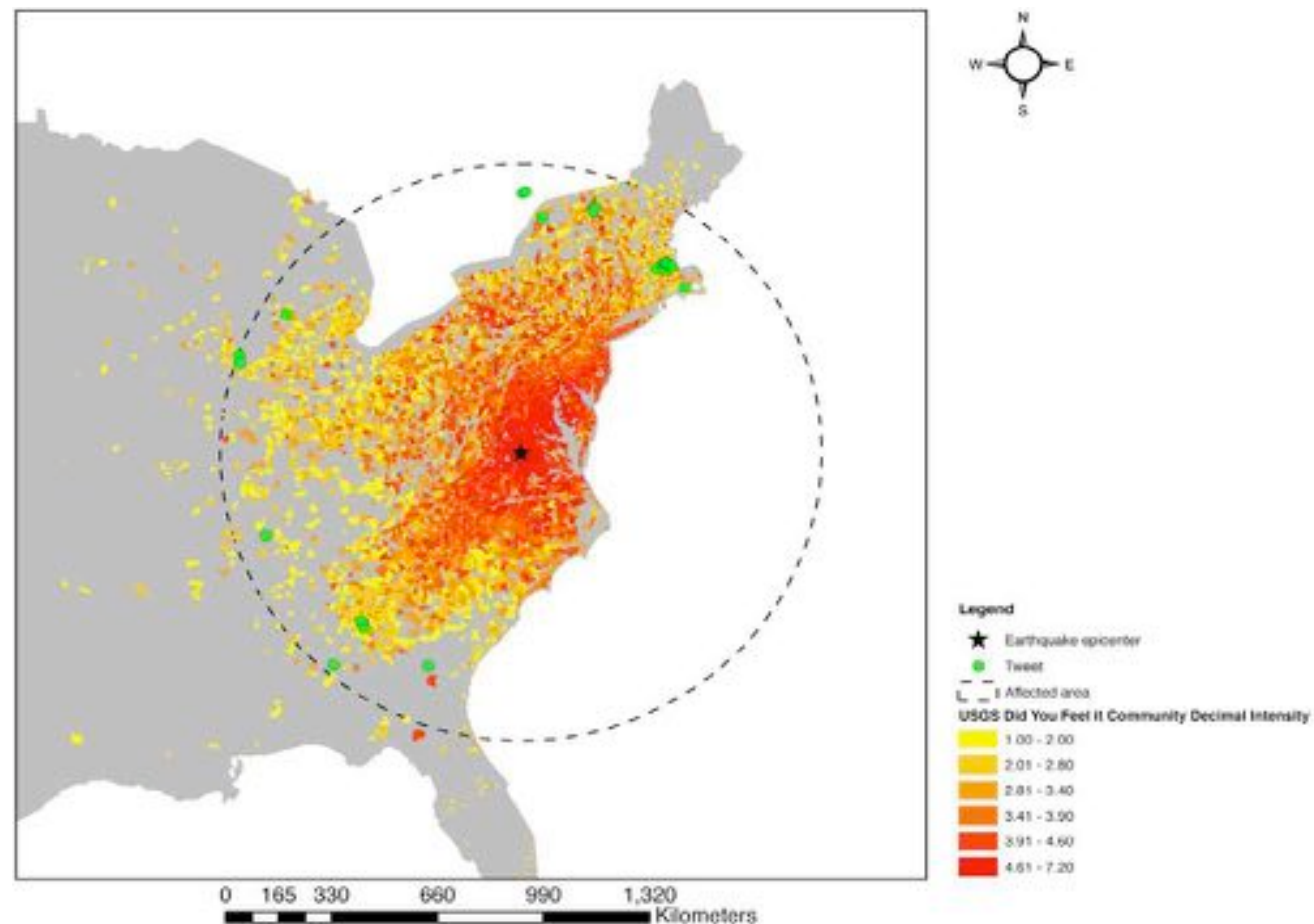
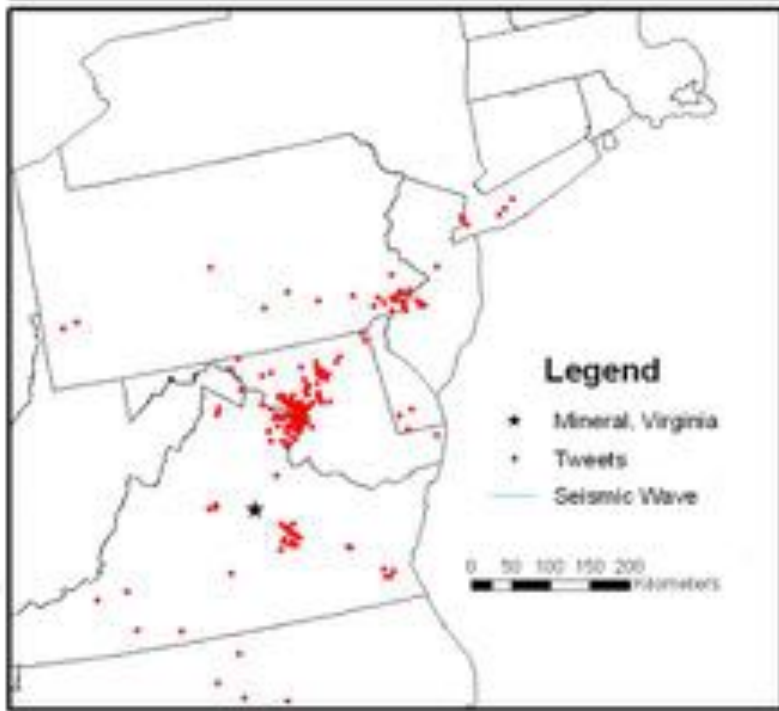
3. Applications: 2014 Shanghai Stampede



On December 31, 2014, a deadly stampede occurred in Shanghai, on the Bund (Waitan), where around 300,000 people had gathered for the new year celebration. 36 people were killed and there were 49 injured,

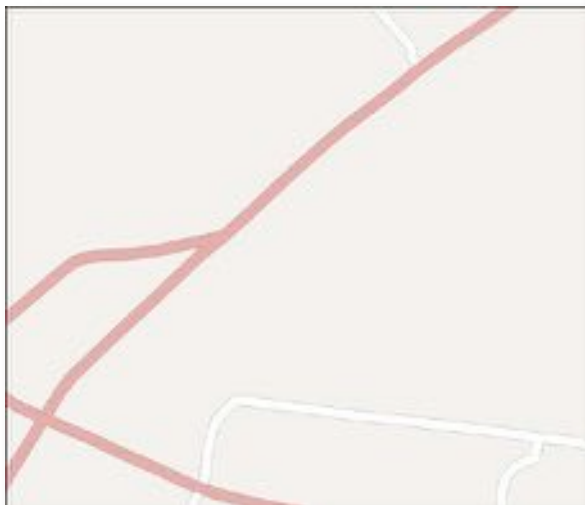


Tweets Within 2 to 3 Minutes After Earthquake

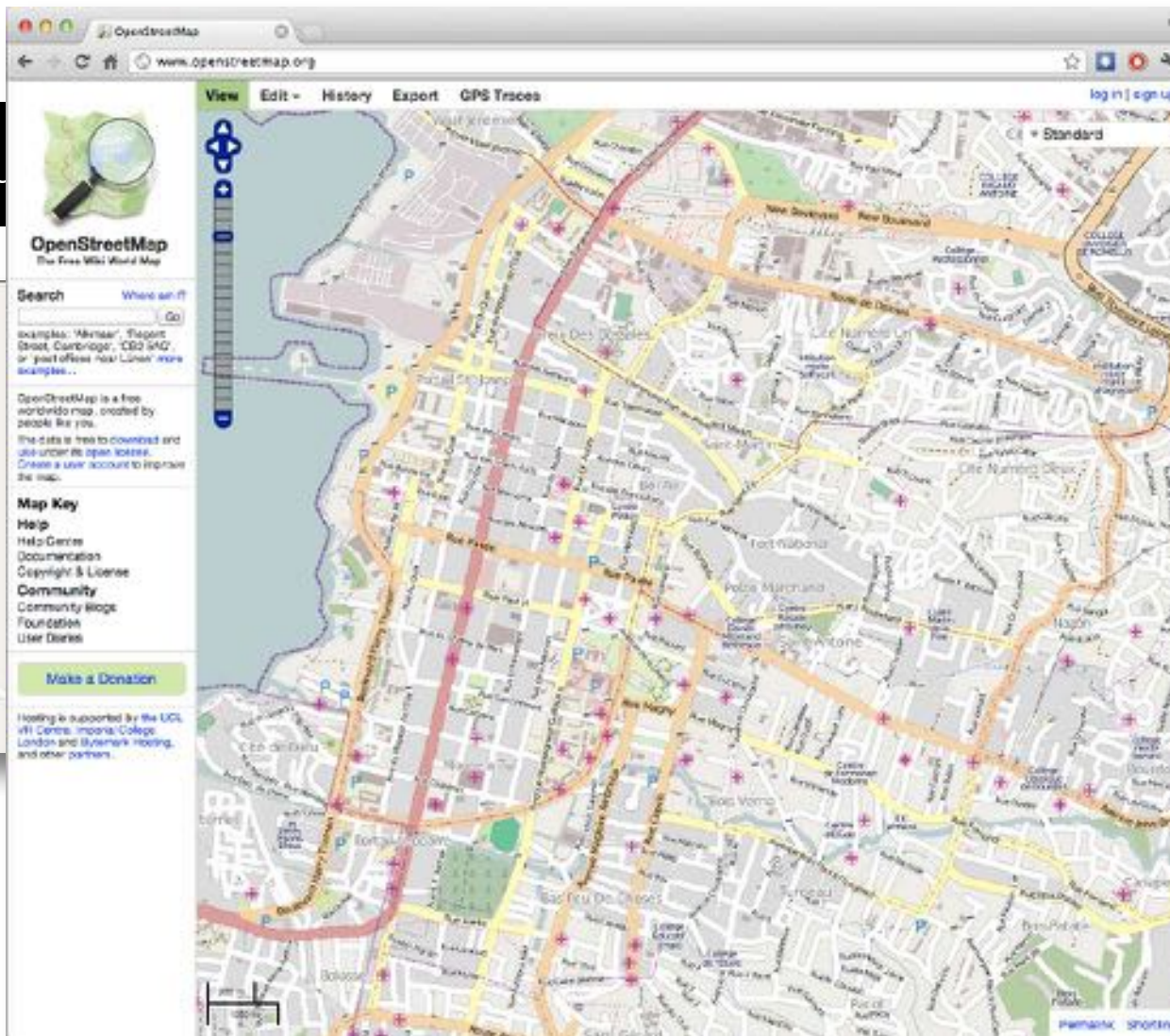


Twitter as a Distributed Sensor System for earthquakes (A. Crooks, et al. TGIS, 2013)

OpenStreetMap crowdsou



before the quake



April. 20. 2012



one week later

P. Boccoardo et al., 2012 ISPRS Archives

- **Multi-sourced big geo-data provide an unprecedented opportunity to capture large volumes of individuals' behavior patterns.**
- **Big geo-data can reveal characteristics from both the human and geographical perspectives.**
- **Thus, big geo-data provide a promising approach to disaster management.**