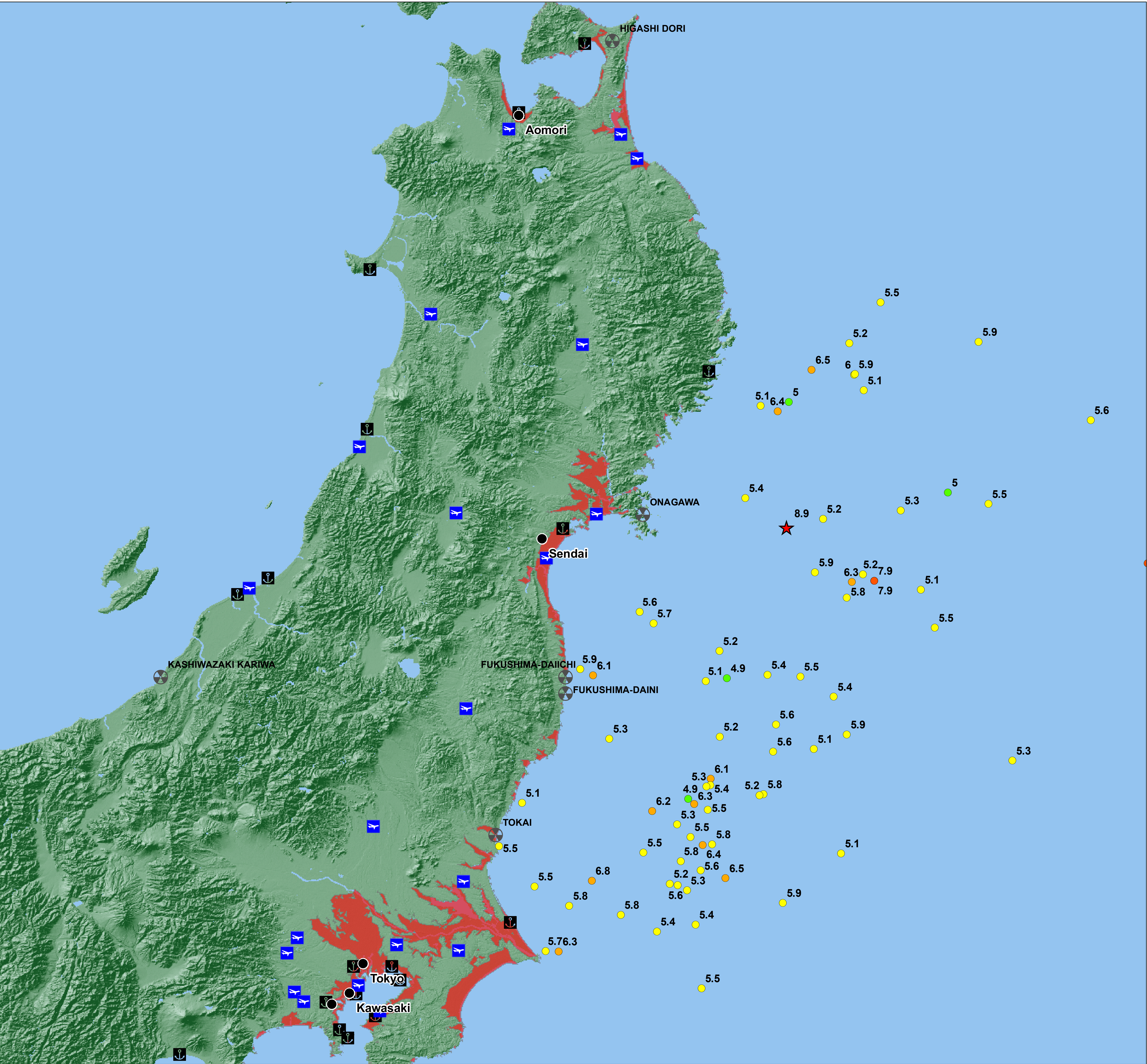


# 8.9M HONSHU JAPAN EQ: Low-Lying Coastal Areas

March 11, 2011



### Legend

- Airports

Seaports

Nuclear Power Plants

0-30ft Elevation
- Recent Earthquakes**

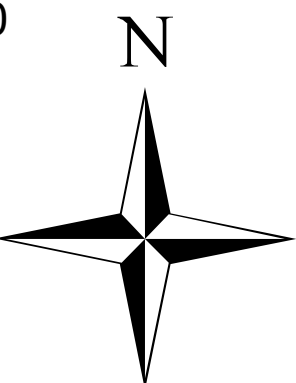
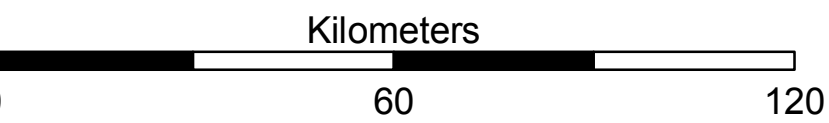
4.0 - 5.0

5.0 - 6.0

6.0 - 7.0

7.0 - 8.0

8.0 - 9.0



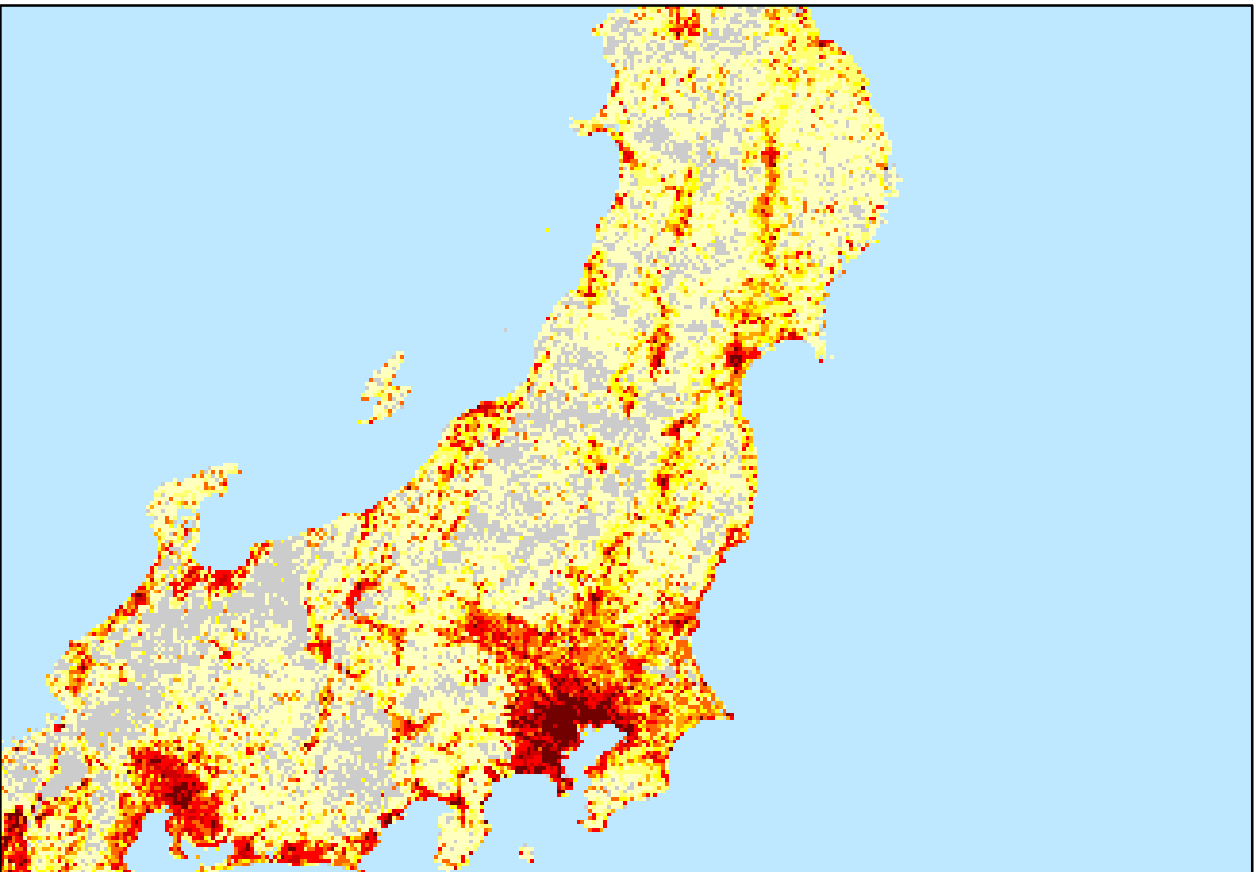
### Description

On Friday March 11, 2011, 0546 UTC an 8.9M earthquake struck off the coast of North Japan approx 128 km east of Sendai. This earthquake has caused a devastating tsunami to hit Japan and travel through the Pacific. Waves up to 33 feet have been reported to have hit Sendai.

**Estimated affected population (0-30ft elevation zone) is 13,836,546** based on LandScan 2007 population density.

0-30ft elevation data was generated using Digital Terrain Elevation Data (DTED) provided by NOAA.

### Landscan 2009 Pop Density



### Overview Map



**Disclaimer:**  
The delineation of political boundaries, and associated data shown here do not imply endorsement by the Pacific Disaster Center.

**Product Information:**  
Product Created.....11 MAR 11  
Source Data.....ESRI, Landscan, NOAA  
Projection.....Mercator Datum WGS84  
Produced by.....Pacific Disaster Center  
<http://www.pdc.org>