

3ISACROWD

Integrating Satellite technologies And
Crowdsourcing for emergency Response Operations,
early Warning and Disaster management

Lefteris Mamais (SpaceTec Partners)

04.12.2012

United Nations International Expert Meeting on
Crowdsource Mapping for Disaster Risk
Management and Emergency Response



Blackshore



SRC



SpaceTec
Partners



Brimatech



FDC
SIRS
SDIS2B



Planetek
DPC



Integrasys
Geosmart
EUSC

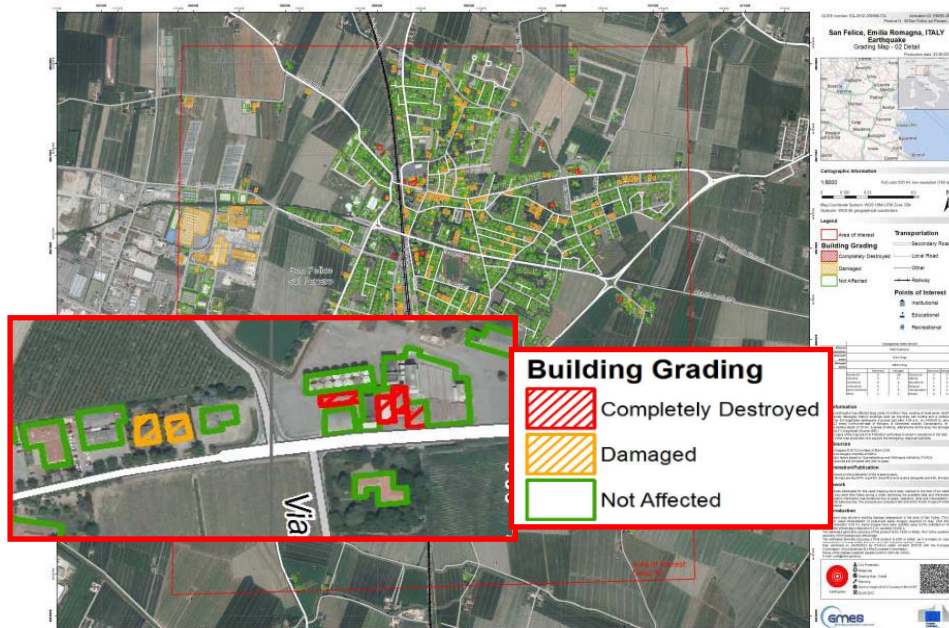


SpaceHellas

The European Earth Observation Programme

Today, GMES services address six main thematic areas:

- Land Monitoring
- Marine Environment Monitoring
- Atmosphere Monitoring
- Emergency Management
- Security
- Climate Change



GMES Emergency Management Service - Mapping:

- Global
- Rush (hours/days) and non-rush (weeks)
- Reference, delineation, grading maps
- EU CPs, International Humanitarian Aid, European Commission agencies are users

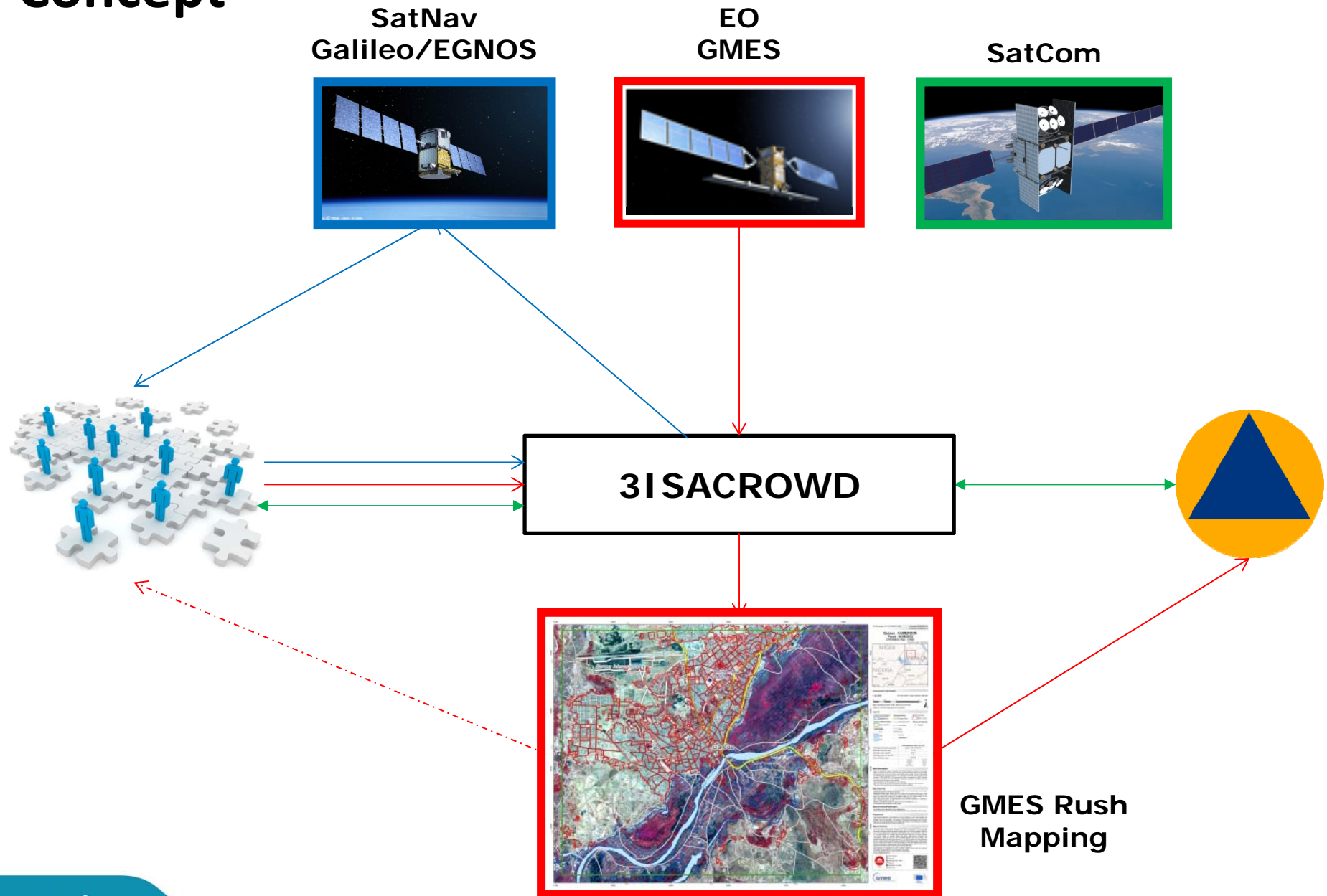
Motivation

- GMES EMS-Mapping is one of the most significant achievements of the European Earth Observation programme (fully operational since April 1,2012)
- But *in-situ* component is missing or underdeveloped
- Crowdsourcing for emergency management has proven added-value
- Synergy of EO with SatNav and SatCom could further enhance the Emergency Management (GMES EMS)

Objectives

1. Integrate crowdsourcing into Rush Mapping services – in particular GMES EMS-Mapping (main focus on emergency response and early warning)
2. Ensure continuous information flow using COTS SatCom solutions
3. Integrate Telecom and/or SatNav alerting systems into EMS
4. Combine the above into a sustainable service, enhancing the emergency management capacity (especially GMES EMS)

Concept



Logic

- User requirements
 - Interaction with user community
 - Liaison with expert groups
 - Crowdsourcing communities
 - Service providers
 - Institutional stakeholders
- System architecture
 - Tailored to specific scenario definitions and user requirements
- Implementation
 - Focus on improvement of emergency response and early warning
 - Assess impact on preparedness and recovery phases
- Integration
 - 3ISACROWD platform offering pre-operational service

Impact

- Enhance the Emergency Management capacity (in particular Rush Mapping of GMES EMS)
- Promote synergies between European Space Programmes (GMES, Galileo, EGNOS)
- Provide end-users (CPs and crowd) with the required information in a seamlessly integrated, timely, secure and user-friendly fashion

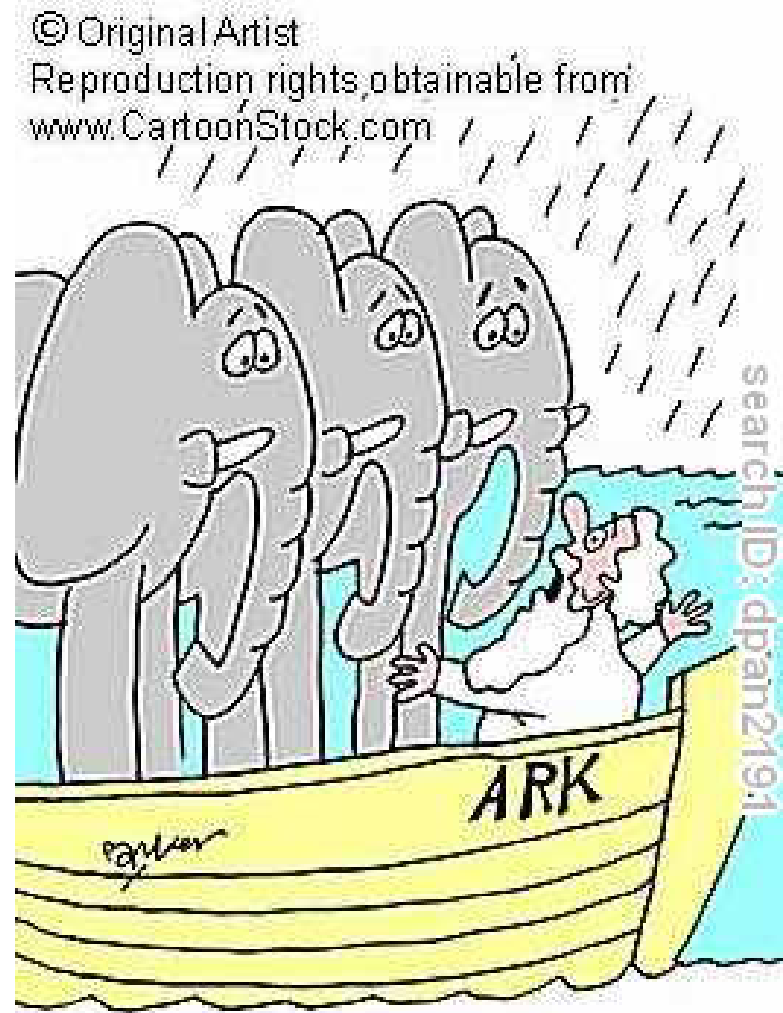
“Two's company, three's a crowd”

Special thanks to UN-SPIDER

Happy to answer your
questions

For more info feel free to catch
up with me

mamais@spacetecpartners.eu



"Haven't you heard the expression 'Two's company, three's a crowd'?"