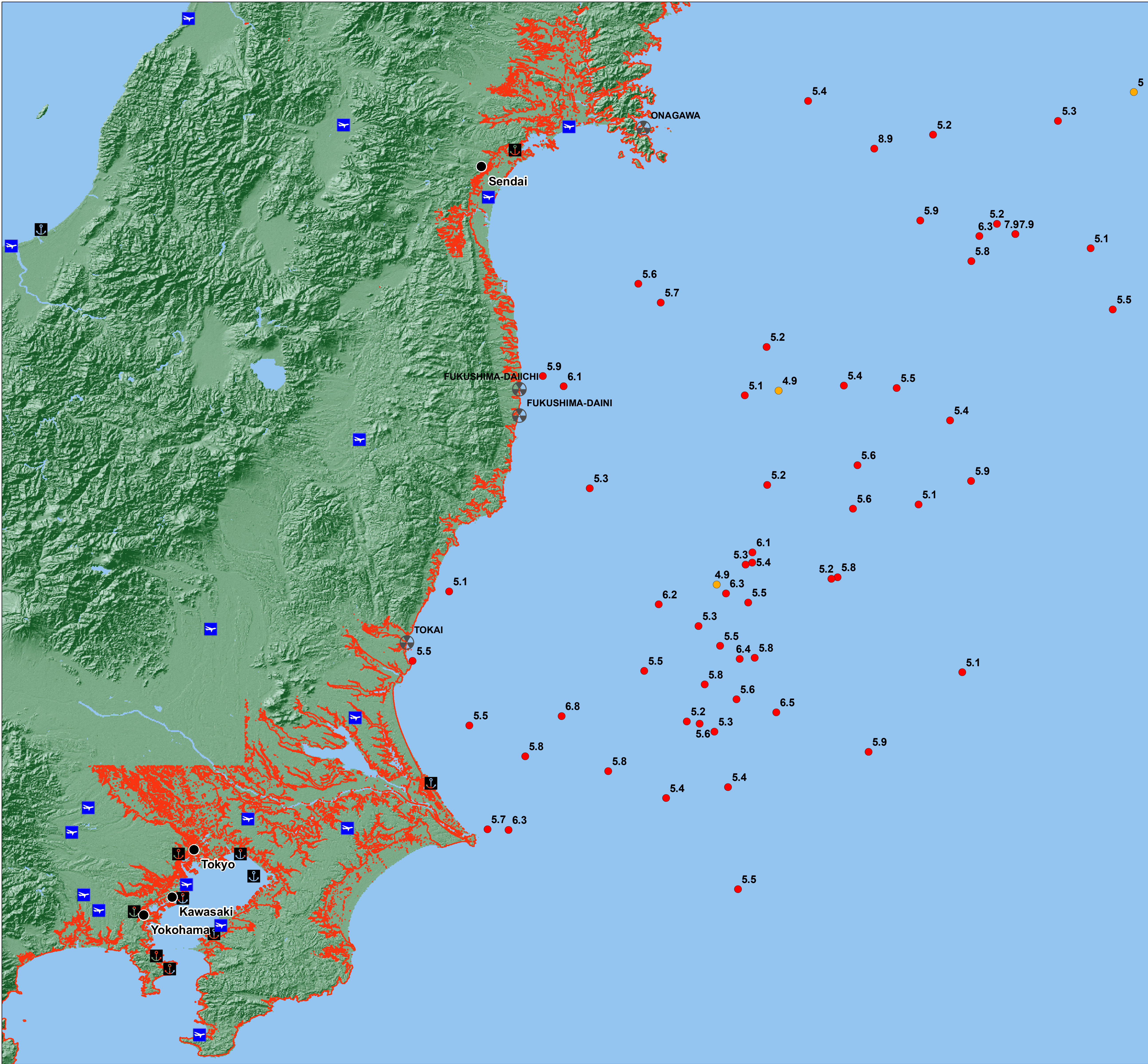


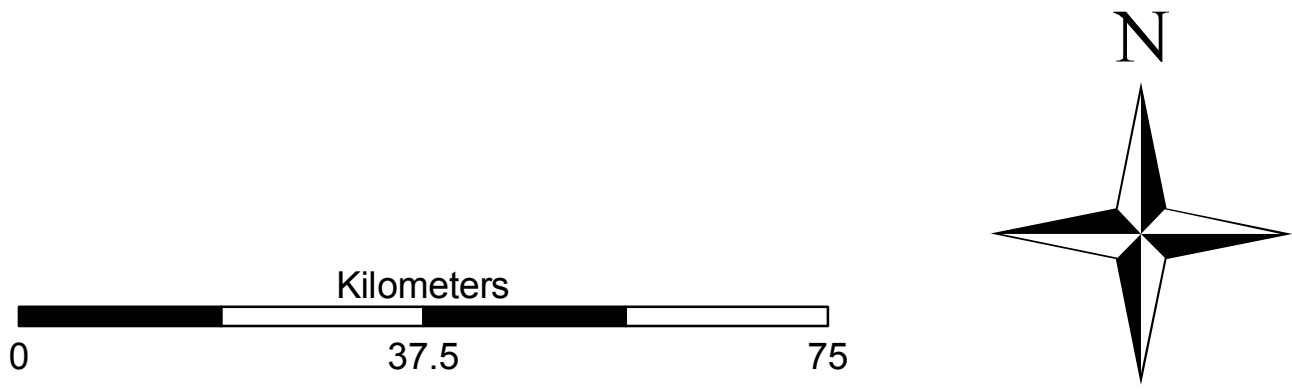
8.9M HONSHU JAPAN EQ: Low-Lying Coastal Areas

March 11, 2011



Legend

- Recent Earthquakes**
 - Less than 4.0
 - 4.0 - 4.5
 - 4.5 - 5.0
 - Greater than 5.0
- Airports
 - Seaports
 - Nuclear_Power_Plants
 - 30ft Contour

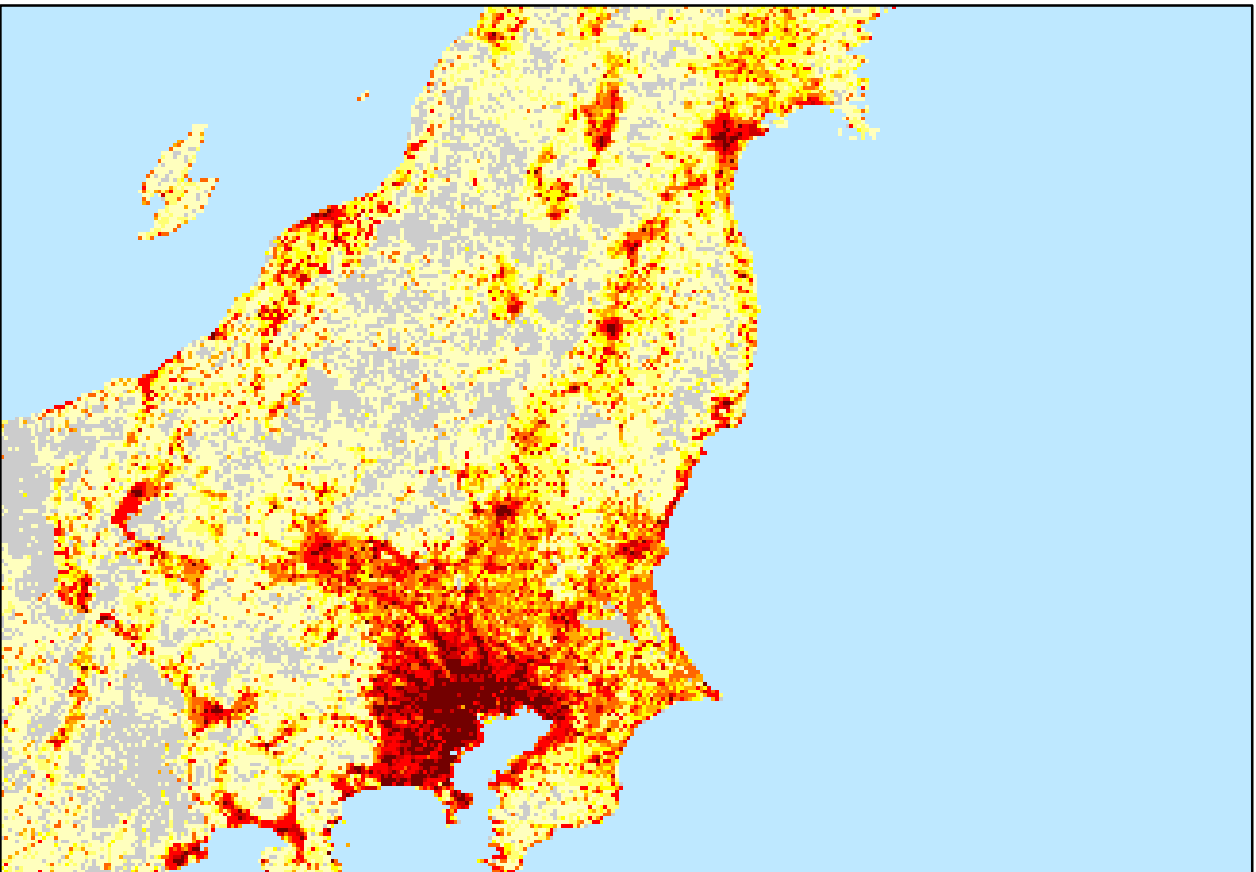


Methodology

On Friday March 11, 2011 an 8.9M earthquake struck off the coast of North Japan approx 128 km east of Sendai. This earthquake has caused a devastating tsunami to hit Japan and travel through the Pacific. Waves up to 33 feet have been reported to have hit Sendai.

30 foot contours were created using ASTER GDEM. ASTER GDEM is a product of METI and NASA.

Landsat 2009 Pop Density



Overview Map



Disclaimer:
The delineation of political boundaries, and associated data shown here do not imply endorsement by the Pacific Disaster Center.

Product Information:
Product Created.....11 MAR 11
Source Data.....ASTER GDEM
Projection.....Mercator Datum WGS84
Produced by.....Pacific Disaster Center
<http://www.pdc.org>